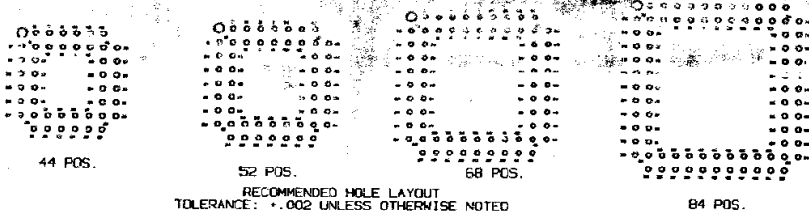


CONVERSION CHART

INCH	MM
.002	0.05
.010	0.25
.020	0.51
.035	0.89
.056	1.42
.062	1.57
.065	1.65
.070	1.77
.100	2.54
.130	3.30
.137	3.47
.360	9.14
.500	12.70
.600	15.24
.660	16.76
.700	17.78
.760	19.30
.800	20.32
.890	22.60
.960	24.38
.990	25.15
1.000	25.40
1.160	29.46
1.190	30.22
1.195	30.35
1.200	30.48
1.390	35.30



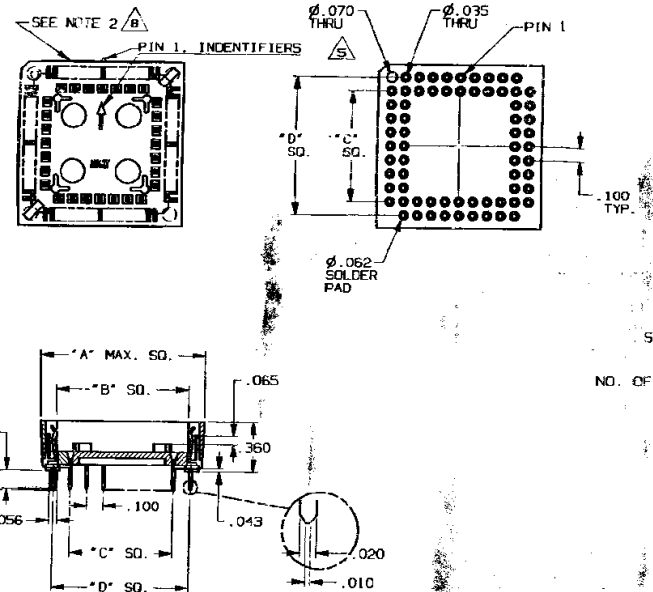
SPECIFICATIONS:

MATERIALS:
 CONTACT: COPPER ALLOY, TIN/LEAD PLATE OVER NICKEL.
 INSULATOR: PPS

ELECTRICAL:
 CURRENT CAPACITY: 1 AMP.
 LOW LEVEL CONTACT RESISTANCE: 30 MILLIOHMS MAX.
 CAPACITANCE (CONTACT TO CONTACT): 1 pF MAX.
 DIELECTRIC WITHSTANDING VOLTAGE: 600 VAC PER MIL-STD-1344, METHOD 3001.1.

MECHANICAL:
 FORCE, INSERTION: 280g MAX. PER LINE.
 FORCE, WITHDRAWAL: 10g M.N. PER LINE.
 FLUX, NORMAL: 200g MIN. PER LINE.

ENVIRONMENTAL:
 OPERATING TEMPERATURE: -67°F TO +221°F
 (-55°C TO +105°C.)
 STORAGE TEMPERATURE: -67°F TO +221°F
 (-55°C TO +105°C.)



PCS - XXX A - 1 X 5

SERIES: PCS
 NO. OF CONTACTS: XXX
 TYPE: A = JEDEC "A"

1 = TIN/LEAD
 2 = WITH LOCATION POST

BLANK = WITHOUT LOCATION POST

PART NO.	DIM. "A"	DIM. "B"	DIM. "C"	DIM. "D"
PCS-044A-1X	.690	.660	.500	.700
PCS-052A-1X	.990	.760	.600	.600
PCS-068A-1X	1.190	.960	.800	1.000
PCS-084A-1X	1.390	1.160	1.000	1.200

- NOTES:**
- INTERPRET DRAWING PER ASME Y14.5M-1994.
 - DATE CODE (PER BELOW) TO BE LASER CODED AND CENTERED ON THIS SURFACE.

OUTLINE DRAWING
 SPECIFICATIONS ARE SUBJECT TO CHANGES WITHOUT NOTICE

REV	REVISIONS
0	INITIAL RELEASE
1	REVISED: 5-25-89
2	REVISED: 5-25-89
3	REVISED: 5-25-89
4	REVISED: 5-25-89
5	REVISED: 5-25-89
6	REVISED: 5-25-89
7	REVISED: 5-25-89
8	REVISED: 5-25-89
9	REVISED: 5-25-89

UNLESS OTHERWISE SPECIFIED DIMENSIONS ARE IN INCHES DO NOT SCALE PRINT

FILE NAME: DIRECTORY: PCSOUTLN
 MATERIAL: SEE SPECIFICATIONS
 FINISH: SEE SPECIFICATIONS

ORIGINAL DATE OF DRAWING: 5-25-89
 DATE: 5-25-89
 CHECKED: RAY B. DATE: 1-19-90
 APPROVED: S.D. DATE: 6-2-89
 CODE IDENT. NO. 91506
 DIM. SIZE C
 NEXT ASSY:

THIS IS A C.I.D. CONTROLLED DRAWING. DO NOT MAKE UNAUTHORIZED REVISIONS TO DRAWING.

AUGAT INC. 152 JOHN DIETZCH BLVD. ATLEBORO FALLS, MASS. 02763

TITLE: **OUTLINE DRAWING**
 PCS SOCKET

DWG. NO. PCS-XXXA-1X
 REV. 9

PRODUCT CODE: 155
 SCALE: SHEET 1 OF 1