

4

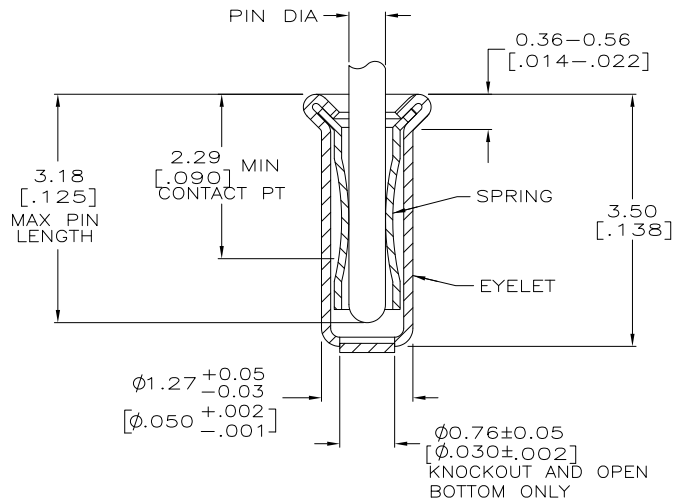
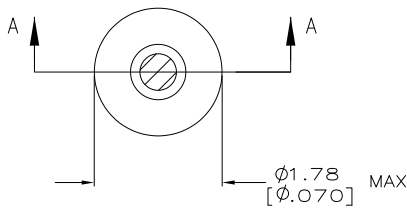
3

2

1

THIS DRAWING IS UNPUBLISHED. RELEASED FOR PUBLICATION. ALL RIGHTS RESERVED.

LOC	DIST	REVISIONS		
F	LNK	DESCRIPTION	DATE	BY
AS4		REVISED PER ECO-11-004835	11MAR11	RK HMR



A-A SECTION

- △ TIN PER MIL-T-10727 OR TIN LEAD .000254 [.000100] MIN THK.
- △ GOLD PER MIL-G-45204, TYPE II, 0.00076 [.000030] MIN THK OVER NICKEL PER QQ-N-290 0.00028 [.000011] MIN THK ON CONTACT AREA.
- △ GOLD FLASH PER MIL-G-45204, TYPE II, 0.13µm [.000005] MIN THK. OVER NICKEL PLATE PER QQ-N-290 0.51µm-1.52µm [.000020-.000060] EXT THK.
- 4. RECOMMENDED HOLE SIZE, PLATED OR UNPLATED:
MACHINE INSERTION: 1.32±0.05 [.052±.002]
HAND INSERTION: 1.32 +0.10 [-.000] [-.000]
- 5. APPLICATION TOOL PART NUMBER:
MACHINE NO. 682127-3
INSERTION HEAD NO. 682039-2
- △ TO INSURE PROPER SPRING TENSION DO NOT EXCEED A 0.05 [.002] DIFFERENCE IN PIN DIA WHEN CHANGING TO A SMALLER PIN.
- 7. BOTTOM PLUG KNOCKOUT TOOL PART NUMBER 69729 WITH TIP PART NUMBER 69728.
- △ MATERIAL: SPRING: BERYLLIUM COPPER QQ-C-533
EYELET: COPPER: QQ-C-576
- △ OBSOLETE PARTS: OBSOLETE CIS STREAMLINING PER D.RENAUD/D.SINISI

SUPSD BY	RECOMMENDED PIN DIA	FINISH	PART NO
2-331272-7	0.56-0.64 [.022-.025]	TIN △ GOLD △	331272-2 4-331272-3 4-331272-2
OBSOLETE	0.46-0.53 [.018-.021]	TIN △ GOLD △	4-331272-1 3-331272-9 3-331272-8
OBSOLETE		TIN △ GOLD △	3-331272-7 3-331272-5 3-331272-4
OBSOLETE	0.56-0.64 [.022-.025]	TIN △ GOLD △	3-331272-7 3-331272-3 3-331272-1
△ OBSOLETE		TIN △ GOLD △	3-331272-0 2-331272-7 2-331272-6
OBSOLETE	0.56-0.64 [.022-.025]	TIN △ GOLD △	2-331272-5 2-331272-3 2-331272-2
OBSOLETE		TIN △ GOLD △	2-331272-2 2-331272-1
OBSOLETE	0.46-0.53 [.018-.021]	TIN △ GOLD △	2-331272-5 2-331272-3 2-331272-2
OBSOLETE		TIN △ GOLD △	2-331272-2 2-331272-1
OBSOLETE	0.56-0.64 [.022-.025]	TIN △ GOLD △	2-331272-5 2-331272-3 2-331272-2
OBSOLETE	0.46-0.53 [.018-.021]	TIN △ GOLD △	2-331272-2 2-331272-1

THIS DRAWING IS A CONTROLLED DOCUMENT. DWG NO. R. TALLEY 4-5-91

DIMENSIONS: mm [INCHES]

TOLERANCES UNLESS OTHERWISE SPECIFIED:

0 PL	±	
1 PL	±	
2 PL	±	
3 PL	±	0.20 [0.008]
4 PL	±	
ANGLES	±	

MATERIAL: △

FINISH: SEE TABLE

APPROVED: R. TALLEY

TE Connectivity

MINIATURE SPRING SOCKET ASSEMBLY, SERIES 2

SIZE: A2 CASE CODE: C=331272 DRAWING NO: 331272

RESTRICTED TO: -

CUSTOMER DRAWING SCALE: 20:1 SHEET: 1 of 1 REV: AS4