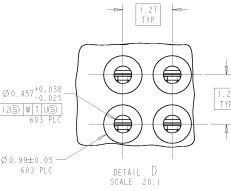
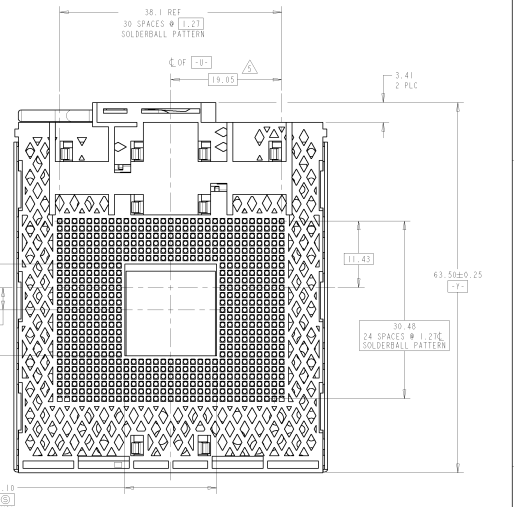
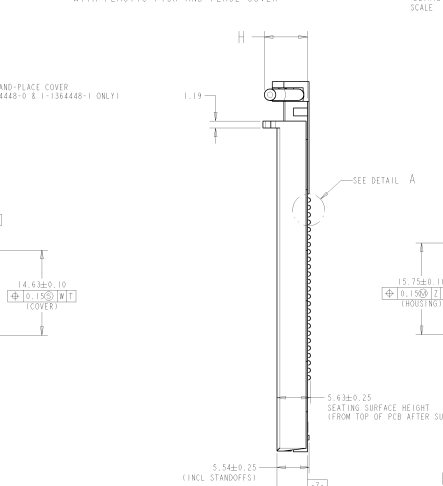
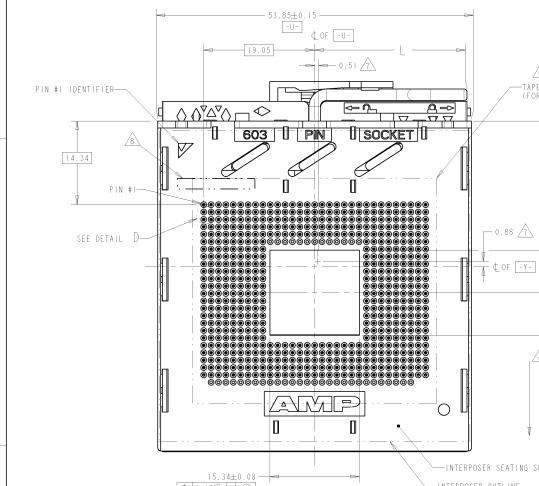


REV	DATE	DESCRIPTION	BY	CHKD	APPD
E		REVISED PER EC 0512-0044-03			
F		REV PER EC 0513-0139-04			

△ HOUSING - HIGH TEMPERATURE THERMOPLASTIC, UL94V-0 BLACK
 COVER - HIGH TEMPERATURE THERMOPLASTIC, UL94V-0, NATURAL
 SLIDE CAM - HIGH TEMPERATURE THERMOPLASTIC, UL94V-0, BLACK
 CONTACT - BERYLLIUM COPPER
 ACTUATION LEVER - STAINLESS STEEL
 TAPE PICK-AND-PLACE COVER: POLYIMIDE FILM
 PLASTIC PICK-AND-PLACE COVER: HIGH TEMPERATURE THERMOPLASTIC, UL 94V-0, BLACK.
 △ CONTACT - 0.76µm MIN GOLD IN CONTACT AREA OVER 0.22µm MIN NICKEL ALL OVER.
 3. INSTRUCTION SHEET 408-8407. QUALIFICATION SPECIFICATION 501-533.
 △ ACTUATION DIRECTION - COVER TRAVELS 0.46±0.15 WITH MATED INTERPOSER.
 △ THIS DIMENSION FOR PIN #1 SOLDBALL.
 △ PLASTIC COVER (-4, -8, -9) OR TAPE COVER (-10, -11) PROVIDED FOR PICK-AND-PLACE EQUIPMENT - REMOVE COVER BEFORE INSTALLING PROCESSOR.
 △ APPROXIMATE CENTER OF GRAVITY OF SOCKET ASSEMBLY.
 △ DATE CODE WITH OPTIONAL IDENTIFIERS, LOCATED APPROXIMATELY AS SHOWN.



REV	DATE	DESCRIPTION	BY	CHKD	APPD	
7	42±0.30	26.16±0.30	EXTENDED	TAPE	HARD	1-1364448-1
7	42±0.30	26.16±0.30	EXTENDED	TAPE	THERMOFORMED	1-1364448-0
7	42±0.30	26.16±0.30	EXTENDED	PLASTIC	HARD	1364448-9
7	42±0.30	26.16±0.30	EXTENDED	PLASTIC	THERMOFORMED	1364448-8
5	92±0.30	28.32±0.30	STANDARD	PLASTIC	THERMOFORMED	1364448-4

HANDLE	HANDLE	HANDLE TYPE	PICK-AND-PLACE	JSC TRAY	PART NUMBER
1364448-1	1364448-0	1364448-9	1364448-8	1364448-4	1364448-1

REV	DATE	DESCRIPTION	BY	CHKD	APPD
1		REVISED PER EC 0512-0044-03			
2		REV PER EC 0513-0139-04			

SOCKET, MICRO PGA, 603 POSITION
 CENTER LEVER ACTUATED 21F
 SURFACE MOUNT SOLDBALL BALLS
 DATE CODE WITH OPTIONAL IDENTIFIERS, LOCATED APPROXIMATELY AS SHOWN.