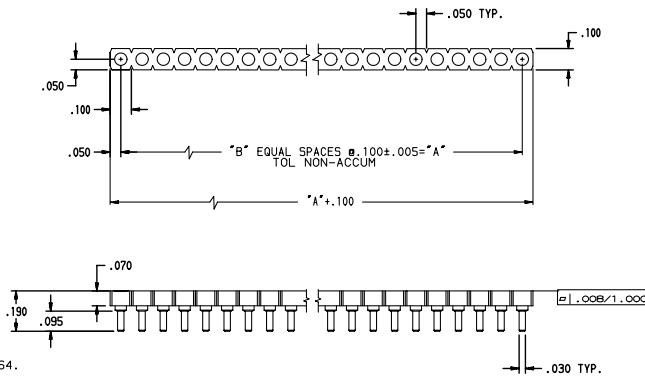


TABLE 2: LEAD FREE VERSION

TABLE 2 CONTACTS		
[XXX]BLF	CLIP PLATING	SHELL PLATING
157BLF	200 μ " TIN OVER 50 μ " NICKEL	200 μ " TIN OVER 100 μ " NICKEL
160BLF	30 μ " GOLD OVER 50 μ " NICKEL	200 μ " TIN OVER 100 μ " NICKEL

TABLE 1		
PART NUMBER	DIMENSION	
SIP050-1 X [] - [XXX]B(LF)	"A"	"B"
01	0	0
02	.100	1
03	.200	2
04	.300	3
05	.400	4
06	.500	5
07	.600	6
08	.700	7
09	.800	8
10	.900	9
11	1.000	10
12	1.100	11
13	1.200	12
14	1.300	13
15	1.400	14
16	1.500	15
17	1.600	16
18	1.700	17
19	1.800	18
20	1.900	19
21	2.000	20
22	2.100	21
23	2.200	22
24	2.300	23
25	2.400	24
26	2.500	25
27	2.600	26
28	2.700	27
29	2.800	28
30	2.900	29
31	3.000	30
32	3.100	31
64	6.300	63



NOTES:

- 1. NUMBER OF CONTACTS PER ROW (01 TO 32), AND 64.
- 2. MATERIAL:
GLASS FILLED POLYESTER (PCT)
RATED UL 94V-0, COLOR BLACK.
- 3. CONTACT MATERIAL:
OUTER SHELL: BRASS ALLOY 360, 1/2 HARD PER QQ-B-626.
INNER CONTACT: BERYLLIUM COPPER, ALLOY 172 PER QQ-C-533.
- 4. CONTACT PLATING:
TIN/LEAD OR LEAD-FREE PER MIL-P-81728 TYPE 1,
NICKEL PER QQ-N-290.
GOLD PER MIL-G-45204, TYPE 1, GRADE C.
- 5. RECOMMENDED PCB THRU HOLE DIA. .036±.003.

NOTE RoHS INFORMATION

- The "LF" products meet European Union Directives and other country regulations as described in 65-22-008.
- The housing will withstand exposure to 260°C peak temperature for 20 seconds in a wave solder application with a 1.6mm minimum thick circuit board. See application notes/procedures if they are available.
- Packaging spec: see 65-14-920

LEAD FREE PART NUMBER (SEE TABLE)
SIP050-1 X [] - [XXX]BLF

www.fciconnect.com		surface 150 1302 ✓	tolerance std ISO 406 ISO 1101	projection mm
Dr. D. WOLFORD 1/10/00		TOLERANCES UNLESS OTHERWISE SPECIFIED		size A3
Eng. A. VASBINDER 1/10/00		ANGULAR	0.X ±0.1	Scale 35:1
Chr. A. VASBINDER 1/10/00		LINEAR	0.XX ±0.1	ECN LS07-0271
Appr. A. VASBINDER 1/10/00		0.XX ±0.1	0.XXX ±0.1	Spec ref -
Product family		SOCKET		
FCJ TITLE SINGLE ROW SIP SOCKET (LOW PROFILE)		Part no 58805		Rev. 6
catalog no		CUSTOMER sheet 1 of 1		

rev	ecm no	dr	date
A	V00229	DLW	1/10/00
B	V00776	DLW	3/14/00
C	V12453	CRG	10/24/01
D	V03-1035	DAI	09/22/03
E	LS06-0004	LGO	17/01/06
F	LS07-0141	HLE	2007/05/21
G	LS07-0271	HLE	2007/10/29

REV F - 2006-04-17

PDM: Rev:G STATUS:Released Printed: Sep 28, 2009