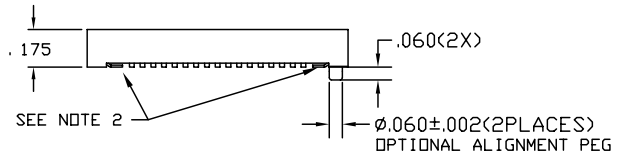
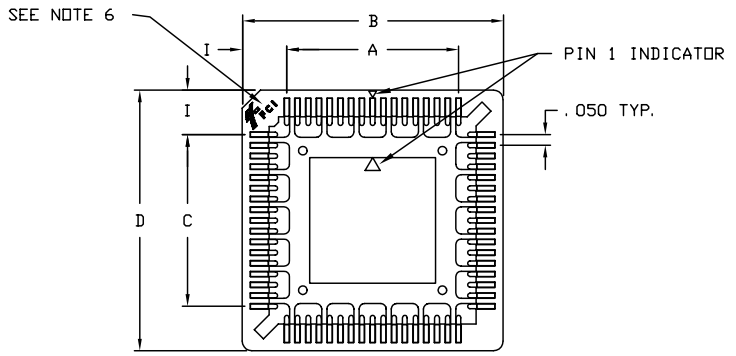


Tous droits strictement réservés. Reproduction ou communication a des tiers interdite sous quelque forme que ce soit sans autorisation écrite du propriétaire. Propriété de © FCI. Droits de reproduction FCI.

All rights strictly reserved. Reproduction or issue to third parties in any form whatever is not permitted without written authority from the proprietor. Property of FCI. Copyright FCI.

1 | 2 | 3 | 4



NOTE: 'PLCC-68P-T-SMT-P' SOCKET SHOWN

NOTES:

- 1. THESE SOCKETS ARE PROVIDED BOTH WITH AND WITHOUT THE ALIGNMENT PEGS IN THE TUBE FORMAT. SOCKETS WITHOUT THE ALIGNMENT PEGS ARE ALSO AVAILABLE IN TAPE & REEL FORMAT. SOCKET'S PART NUMBER AND SOCKET DIMENSIONS ARE LISTED IN THE TABLE ON SHEET 2. FOR PACKAGING DIMENSIONS PLEASE SEE SHEET 3 AND SHEET 5.
- 2. THE LEAD FEET BOTTOM SURFACES SHALL BE COPLANAR WITH RESPECT TO ONE ANOTHER WITHIN .004. NO PART OF THE PLASTIC INSULATOR SHALL PROTRUDE BEYOND THE LEAD FEET PLANE, WITH THE EXCEPTION OF THE OPTIONAL ALIGNMENT PEGS.
- 3. THESE SOCKETS ARE DESIGNED FOR USE WITH PLASTIC LEADED CHIP CARRIERS (PLCC'S) THAT MEET THE DIMENSIONAL REQUIREMENTS OF JEDEC PUBLICATION 95, FOR PACKAGE NUMBERS MD-047 AA-AH & MD-052 AA-AE (RECTANGULAR PACKAGES).
- 4. MATERIALS:
 - A. CONTACT MATERIAL: PHOSPHOR BRONZE
 - B. CONTACT PLATING: 150 μ MIN. TIN OVER 40 μ MIN. NICKEL
 - C. INSULATOR: PPS, HIGH TEMP., UL 94V-0
- 5. PERFORMANCE:
 - A. TEMPERATURE RANGE: -55° C TO 125° C
 - B. CONTACT RESISTANCE: 20 MILLIOHMS MAX.
 - C. INSERTION FORCE: SEE TABLE
 - D. EXTRACTION FORCE: SEE TABLE
 - E. DIELECTRIC WITHSTANDING VOLTAGE: 600 VOLTS RMS FOR 60 SEC.
 - F. DURABILITY: 25 CYCLES MINIMUM.
 - G. WEIGHT: SEE TABLE
- 6. FCI LOGO LOCATION

mat'l. code				tolerances unless otherwise specified				CUSTOMER COPY		Electronics www.fciconnect.com	
ltr	ecm no	dr	date	linear	.XXX±.008			projection	title		
A	V11675	CRG	6/8/01						SURFACE MOUNT PLCC SOCKET		
B	V12144	CRG	8/15/01						product family PLCC code		
C	V12551	CRG	10/22/01	angles	0° ±2'			INCH	size		PLCC
D	V12858	CRG	12/20/01	dr	C.GINGRICH	6/8/01		scale	A4		59001
				enrg	D.WHITING	6/8/01		NTS	dwg no		sheet 1 of 6
				chr	D.WHITING	6/8/01					
				appd	D.WHITING	6/8/01					
sheet index	revision sheet	D	D	D	D	D	D				
		1	2	3	4	5	6				

ACAD PDM: Rev:D STATUS:Released Printed: Aug 05, 2006

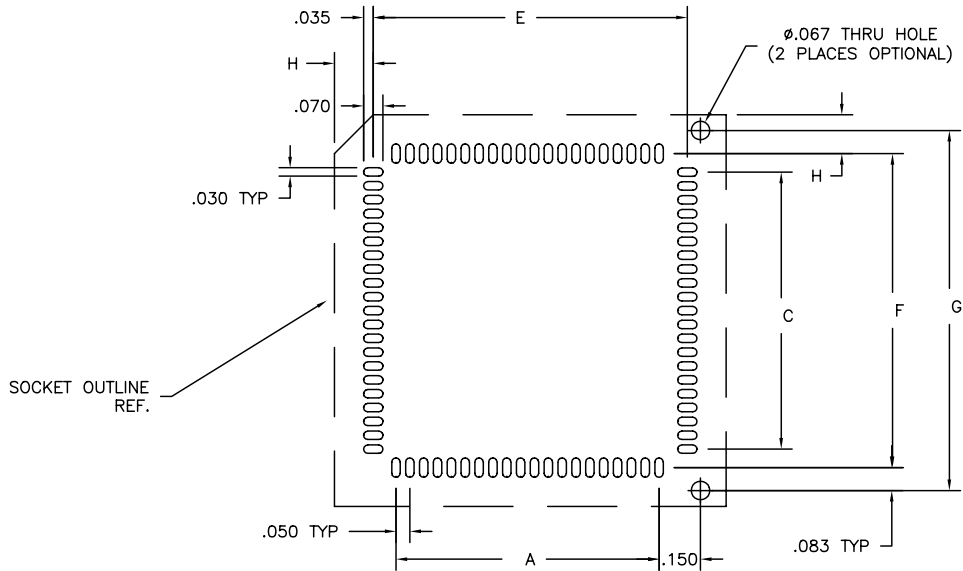
cage code 22526

1 | 2 | 3 | 4

Tous droits strictement réservés. Reproduction ou communication à des tiers sans autorisation écrite du propriétaire. Property of FCI. Droits de reproduction FCI.

All rights strictly reserved. Reproduction or issue to third parties in any form or by any means without written authority from the proprietor. Property of FCI. Copyright FCI.

MCKENZIE PART NUMBER		BERG PART NUMBER		MCKENZIE PART NUMBER		BERG PART NUMBER		MCKENZIE PART NUMBER		BERG PART NUMBER		SOCKET DIMENSIONS									INSERTION FORCE (LBF. MAX.)	EXTRACTION FORCE (LBF. MIN.)	WEIGHT (OUNCE)
WITHOUT PEGS				WITH PEGS				WITH TAPE & REEL				A	B	C	D	E	F	G	H	I			
PLCC-20P-T-SMT	69802-120	PLCC-20P-T-SMT-P	69802-020	PLCC-20P-T-SMT-TR	69802-520C	.200	.600	.200	.600	.334	.334	.500	.133	.200	13.0	1.1	.031						
PLCC-28P-T-SMT	69802-128	PLCC-28P-T-SMT-P	69802-028	PLCC-28P-T-SMT-TR	69802-528	.300	.700	.300	.700	.434	.434	.600	.133	.200	15.0	1.1	.040						
PLCC-32P-T-SMT	69802-132	PLCC-32P-T-SMT-P	69802-032	PLCC-32P-T-SMT-TR	69802-432	.300	.700	.400	.800	.434	.534	.700	.133	.200	15.0	1.5	.044						
PLCC-44P-T-SMT	69802-144	PLCC-44P-T-SMT-P	69802-044	PLCC-44P-T-SMT-TR	69802-444	.500	.900	.500	.900	.634	.634	.800	.133	.200	19.0	2.8	.063						
PLCC-52P-T-SMT	69802-152	PLCC-52P-T-SMT-P	69802-052	PLCC-52P-T-SMT-TR	69802-452	.600	1.000	.600	1.000	.734	.734	.900	.133	.200	22.0	3.5	.071						
PLCC-68P-T-SMT	69802-168	PLCC-68P-T-SMT-P	69802-068	PLCC-68P-T-SMT-TR	69802-468	.800	1.213	.800	1.213	.934	.934	1.100	.140	.207	26.0	5.1	.095						
PLCC-84P-T-SMT	69802-184	PLCC-84P-T-SMT-P	69802-084	PLCC-84P-T-SMT-TR	69802-484	1.000	1.413	1.000	1.413	1.134	1.134	1.300	.140	.207	33.0	6.0	.119						



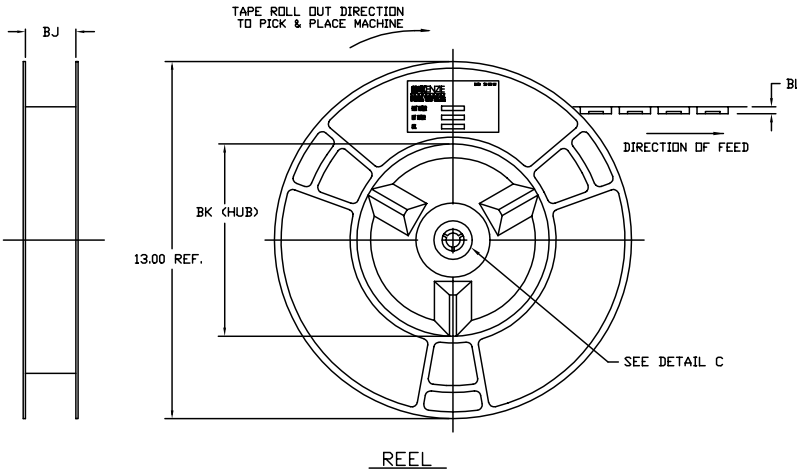
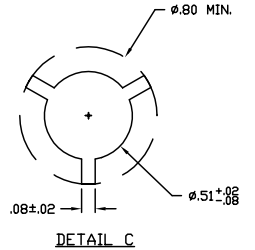
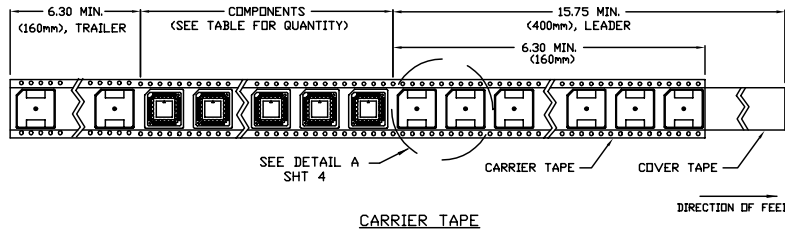
mat'l. code				tolerances unless otherwise specified		CUSTOMER COPY		Electronics FCI www.fciconnect.com	
ltr	ecr no	dr	date	linear	.XXX±.008	projection	title SURFACE MOUNT PLCC SOCKET		
D				angles	0° ±2'	INCH	product family	PLCC	code
				dr	C.GINGRICH 6/8/01	scale	size	dwg no	sheet
				enr	D.WHITING 6/8/01	NTS	A4	59001	2 of
				chr	D.WHITING 6/8/01				
				appd	D.WHITING 6/8/01				
sheet index	revision sheet								

ACAD 3 cage code 22526 4

PDM: Rev:D STATUS: Released Printed: Aug 05, 2006

Tous droits strictement réservés. Reproduction ou communication à des tiers interdite sous quelque forme que ce soit sans autorisation écrite du propriétaire. Propriété de C.FCI. Droits de reproduction FCI.

All rights strictly reserved. Reproduction or issue to third parties in any form whatever is not permitted without written authority from the proprietor. Property of FCI. Copyright FCI.



NOTES:

11. FOR SOCKETS' DIMENSIONS PLEASE SEE SHEET 1.
12. TAPE MATERIAL: POLYSTYRENE, COLOR: BLACK
13. 10 HOLE PITCH CUMULATIVE TOLERANCE ±.008 (±0.20).
14. THE TAPE FOR THE 20 POSITION SOCKET ONLY HAS ONE ROW OF SPROCKET HOLES IN THE SAME SIDE AS THE CHAMFER (TOP). ALL OTHER TAPES HAVE HOLES IN BOTH SIDE AS SHOWN.
15. ALL DIMENSIONS AND TOLERANCES SHOULD MEET EIA STANDARD EIA-481.
16. THIS TAPE IS THE MODIFIED VERSION FROM 'PLCC-20P-T-SMT-TR' AND THE PITCH (DIM. 'BG') HAS CHANGED FROM 24 MM TO 20 MM.
17. FOR TAPE & REEL PACKAGING DIMENSIONS PLEASE SEE SHEET 4.

mat'l. code				tolerances unless otherwise specified				CUSTOMER COPY		Electronics www.fciconnect.com	
ltr	ecn no	dr	date	linear	.X X±.10	projection	title		SURFACE MOUNT PLCC SOCKETS		
D					.XX ±.008		product family		PLCC		
				angles	0° ±2°	INCH	size		PLCC		
				dr	C.GINGRICH 6/8/01	scale	size		PLCC		
				engr	D.WHITING 6/8/01	NTS	dwg no		code		
				chr	D.WHITING 6/8/01		A4		59001		
				appd	D.WHITING 6/8/01				sheet 3 of		
sheet index	revision sheet										

ACAD

PDM: Rev:D

STATUS: Released

Printed: Aug 05, 2006

cage code
22526

Tous droits strictement réservés. Reproduction ou communication a des tiers interdite sous quelque forme que ce soit sans autorisation écrite du propriétaire. Propriété de FCI. Droits de reproduction FCI.

All rights strictly reserved. Reproduction or issue to third parties in any form whatever is not permitted without written authority from the proprietor. Property of FCI. Copyright FCI.

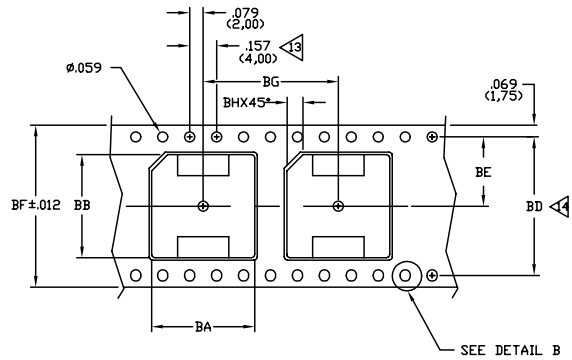


1 | 2

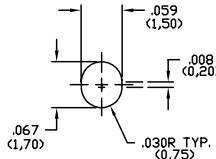
3

4

MCKENZIE PART NUMBER	BERG PART NO.	PACKAGING DIMENSIONS										QTY./REEL
		BA	BB	BD	BE	BF	BG	BH	BJ	BK	BL	
PLCC-20P-T-SMT-TR	69802-520C	0.630 (16,00)	0.630 (16,00)	---	0.453 (11,50)	0.945 (24,00)	0.945 (24,00)	0.059 (1,50)	0.976 (24,80)	4.00 (100,0)	.220 (5,58)	470
PLCC-20P-T-SMT-TR	69802-528	0.732 (18,60)	0.732 (18,60)	1.118 (28,40)	0.559 (14,20)	1.260 (32,00)	0.945 (24,00)	0.094 (2,40)	1.291 (32,80)	4.00 (100,0)	.252 (6,40)	390
PLCC-32P-T-SMT-TR	69802-432	0.740 (18,80)	0.839 (21,30)	1.118 (28,40)	0.559 (14,20)	1.260 (32,00)	0.945 (24,00)	0.098 (2,50)	1.291 (32,80)	4.00 (100,0)	.252 (6,40)	390
PLCC-44P-T-SMT-TR	69802-444	0.937 (23,80)	0.937 (23,80)	1.591 (40,40)	0.795 (20,20)	1.732 (44,00)	1.260 (32,00)	0.098 (2,50)	1.764 (44,80)	7.00 (177,8)	.252 (6,40)	250
PLCC-52P-T-SMT-TR	69802-452	1.031 (26,20)	1.031 (26,20)	1.591 (40,40)	0.795 (20,20)	1.732 (44,00)	1.260 (32,00)	0.098 (2,50)	1.764 (44,80)	7.00 (177,8)	.252 (6,40)	250
PLCC-68P-T-SMT-TR	69802-468	1.236 (31,40)	1.236 (31,40)	1.591 (40,40)	0.795 (20,20)	1.732 (44,00)	1.417 (36,00)	0.098 (2,50)	1.764 (44,80)	7.00 (177,8)	.252 (6,40)	220
PLCC-84P-T-SMT-TR	69802-484	1.429 (36,30)	1.429 (36,30)	2.063 (52,40)	1.031 (26,20)	2.205 (56,00)	1.575 (40,00)	0.098 (2,50)	2.236 (56,80)	7.00 (177,8)	.252 (6,40)	200
PLCC-20P-T-SMT-TR-M	69802-520	0.630 (16,00)	0.630 (16,00)	---	0.453 (11,50)	0.945 (24,00)	0.787 (20,00)	0.094 (2,40)	0.976 (24,80)	4.00 (100,0)	.252 (6,40)	490



CARRIER TAPE
DETAIL A



DETAIL B

mat'l. code				tolerances unless otherwise specified				CUSTOMER COPY		Electronics FCI www.fciconnect.com	
ltr	ecn no	dr	date	.X X±.10		projection		title		SURFACE MOUNT PLCC SOCKETS	
D				.XX X±.008		INCH		product family		PLCC	
				angles 0° ±2°		scale		size		dwg no	
				dr	C.GINGRICH	6/8/01	NTS	A4	59001		code
				enrg	D.WHITING	6/8/01					sheet
				chr	D.WHITING	6/8/01					4 of
				appd	D.WHITING	6/8/01					
sheet index	revision sheet								cage code		
									22526		

ACAD

PDM: Rev:D

STATUS: Released

Printed: Aug 05, 2006

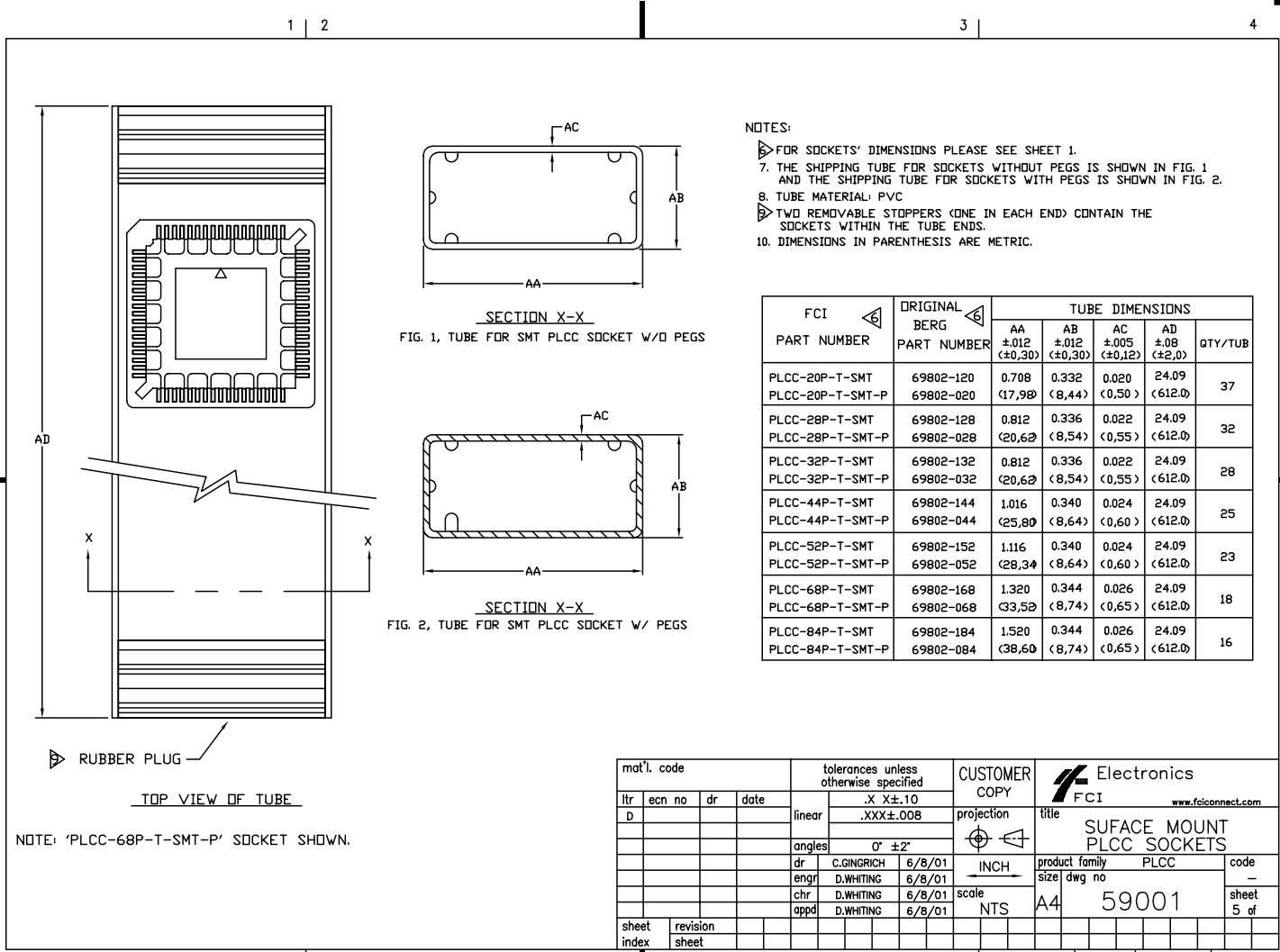
1 | 2

3

4

Tous droits strictement réservés. Reproduction ou communication à des tiers interdite sous quelque forme que ce soit sans autorisation écrite du propriétaire. Propriété de FCI. Droits de reproduction FCI.

All rights strictly reserved. Reproduction or issue to third parties in any form whatever is not permitted without written authority from the proprietor. Property of FCI. Copyright FCI.



- NOTES:
- ▶ FOR SOCKETS' DIMENSIONS PLEASE SEE SHEET 1.
 - 7. THE SHIPPING TUBE FOR SOCKETS WITHOUT PEGS IS SHOWN IN FIG. 1 AND THE SHIPPING TUBE FOR SOCKETS WITH PEGS IS SHOWN IN FIG. 2.
 - 8. TUBE MATERIAL: PVC
 - ▶ TWO REMOVABLE STOPPERS (ONE IN EACH END) CONTAIN THE SOCKETS WITHIN THE TUBE ENDS.
 - 10. DIMENSIONS IN PARENTHESIS ARE METRIC.

FCI PART NUMBER	ORIGINAL BERG PART NUMBER	TUBE DIMENSIONS				QTY/TUB
		AA ±.012 (±0,30)	AB ±.012 (±0,30)	AC ±.005 (±0,12)	AD ±.08 (±2,0)	
PLCC-20P-T-SMT PLCC-20P-T-SMT-P	69802-120 69802-020	0.708 (17,98)	0.332 (8,44)	0.020 (0,50)	24.09 (612,0)	37
PLCC-28P-T-SMT PLCC-28P-T-SMT-P	69802-128 69802-028	0.812 (20,62)	0.336 (8,54)	0.022 (0,55)	24.09 (612,0)	32
PLCC-32P-T-SMT PLCC-32P-T-SMT-P	69802-132 69802-032	0.812 (20,62)	0.336 (8,54)	0.022 (0,55)	24.09 (612,0)	28
PLCC-44P-T-SMT PLCC-44P-T-SMT-P	69802-144 69802-044	1.016 (25,80)	0.340 (8,64)	0.024 (0,60)	24.09 (612,0)	25
PLCC-52P-T-SMT PLCC-52P-T-SMT-P	69802-152 69802-052	1.116 (28,34)	0.340 (8,64)	0.024 (0,60)	24.09 (612,0)	23
PLCC-68P-T-SMT PLCC-68P-T-SMT-P	69802-168 69802-068	1.320 (33,52)	0.344 (8,74)	0.026 (0,65)	24.09 (612,0)	18
PLCC-84P-T-SMT PLCC-84P-T-SMT-P	69802-184 69802-084	1.520 (38,60)	0.344 (8,74)	0.026 (0,65)	24.09 (612,0)	16

NOTE: 'PLCC-68P-T-SMT-P' SOCKET SHOWN.

mat'l. code				tolerances unless otherwise specified				CUSTOMER COPY		Electronics FCI www.fciconnect.com	
ltr	ecn no	dr	date	linear	.X X±.10	projection	title	product family	PLCC	code	
D					.XXX±.008	INCH	SURFACE MOUNT PLCC SOCKETS	size	PLCC	sheet	
				angles	0° ±2'	NTS	A4	dwg no	59001	5 of	
sheet index	revision sheet			dr	C.GINGRICH 6/8/01	scale					
				enrg	D.WHITING 6/8/01						
				chr	D.WHITING 6/8/01						
				appd	D.WHITING 6/8/01						

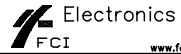
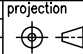
Tous droits strictement réservés. Reproduction ou communication à des tiers interdite sous quelque forme que ce soit sans autorisation écrite du propriétaire. Property of FCI. Copyright FCI.

All rights strictly reserved. Reproduction or issue to third parties in any form whatever is not permitted without written authority from the proprietor. Property of FCI. Copyright FCI.

FCI PART NUMBER WITHOUT PEGS		ORIGINAL BERG PART NUMBER WITHOUT PEGS	ORIGINAL BURNDY PART NUMBER WITHOUT PEGS
PLCC-20P-T-SMT	69802-120	QSIE20P-510T	
PLCC-28P-T-SMT	69802-128	QSIE28P-510T	
PLCC-32P-T-SMT	69802-132	QSIE32P-510T	
PLCC-44P-T-SMT	69802-144	QSIE44P-510T	
PLCC-52P-T-SMT	69802-152	QSIE52P-510T	
PLCC-68P-T-SMT	69802-168	QSIE68P-510T	
PLCC-84P-T-SMT	69802-184	QSIE84P-510T	

FCI PART NUMBER WITH PEGS		ORIGINAL BERG PART NUMBER WITH PEGS	ORIGINAL BURNDY PART NUMBER WITH PEGS
PLCC-20P-T-SMT-P	69802-020	QSIE20P-512T	
PLCC-28P-T-SMT-P	69802-028	QSIE28P-512T	
PLCC-32P-T-SMT-P	69802-032	QSIE32P-512T	
PLCC-44P-T-SMT-P	69802-044	QSIE44P-512T	
PLCC-52P-T-SMT-P	69802-052	QSIE52P-512T	
PLCC-68P-T-SMT-P	69802-068	QSIE68P-512T	
PLCC-84P-T-SMT-P	69802-084	QSIE84P-512T	

FCI PART NUMBER WITH TAPE & REEL		ORIGINAL BERG PART NUMBER WITH TAPE & REEL	ORIGINAL BURNDY PART NUMBER WITH TAPE & REEL
PLCC-20P-T-SMT-TR	69802-420	QSIE20P-510R	
PLCC-28P-T-SMT-TR	69802-428	QSIE28P-510R	
PLCC-32P-T-SMT-TR	69802-432	QSIE32P-510R	
PLCC-44P-T-SMT-TR	69802-444	QSIE44P-510R	
PLCC-52P-T-SMT-TR	69802-452	QSIE52P-510R	
PLCC-68P-T-SMT-TR	69802-468	QSIE68P-510R	
PLCC-84P-T-SMT-TR	69802-484	QSIE84P-510R	

mat'l. code				tolerances unless otherwise specified		CUSTOMER COPY		 FCI www.fciconnect.com	
ltr	ecn no	dr	date	linear	.XX±.01/.X.3	projection	title SURFACE MOUNT PLCC SOCKET		
D					.XXX±.008/.XX±.20		product family PLCC code -		
				angles	0° ±2'	INCH/MM	size	dwg no	sheet 6 of
				dr	C.GINGRICH 6/8/01	scale	NTS	A4	59001
				enr	D.WHITING 6/8/01	cage code 22526			
				chr	D.WHITING 6/8/01				
				appd	D.WHITING 6/8/01				
sheet index	revision sheet								

ACAD

PDM: Rev:D

STATUS:Released

Printed: Aug 05, 2006