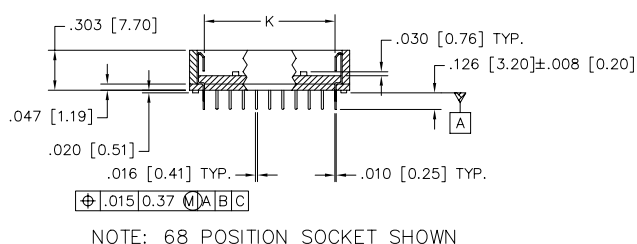
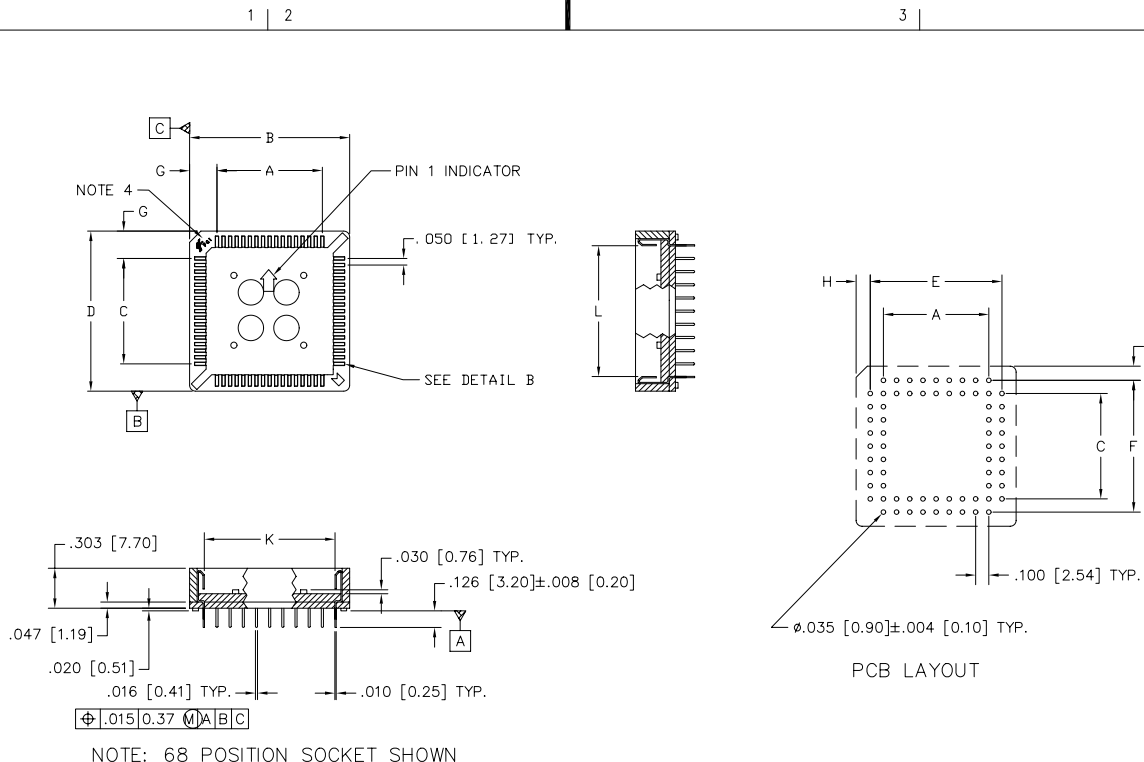


Tous droits strictement réservés. Reproduction ou communication à des tiers sans autorisation écrite de la propriété. Property of FCI. Droits de reproduction FCI.

All rights strictly reserved. Reproduction or issue to third parties in any form without written authority from the proprietor. Property of FCI. Copyright FCI.



mat'l. code				tolerances unless otherwise specified		CUSTOMER COPY		FCI Electronics www.fciconnect.com	
ltr	ecr no	dr	date	linear	.XX ±.01[0.3]	projection	title	product family	code
A	V01265	DLW	5/19/00		.XXX ±.008[0.20]		THROUGH HOLE PLCC SOCKET	SOCKETS	-
B	V02366	MEM	9/29/00		XXXX ±.0020[0.051]				
C	V12551	CRG	10/18/01	angles	0° ±2°	INCH/MM	size dwg no		sheet
				dr	D. WOLFORD 5/19/00	scale	A 59050		1 of 3
				enrg	A. VASBINDER 5/19/00	1:1			
				chr	A. VASBINDER 5/19/00				
				appd	A. VASBINDER 5/19/00				
sheet index	revision sheet	C	C	B					
		1	2	3					

cage code 22526

PDM: Rev:C STATUS: Released Printed: Jun 02, 2007

Tous droits strictement réservés. Reproduction ou communication sans autorisation écrite du propriétaire. Property of FCI. All rights reserved. Reproduction or communication without written authority from the proprietor. Property of FCI. All rights reserved.

FCI
All rights strictly reserved. Reproduction or communication without written authority from the proprietor. Property of FCI. Copyright © FCI.

1 | 2 | 3 | 4

STANDARD FCI PART NUMBER	DIMENSIONS										
	A	B	C	D	E	F	G	H	J	K	L
	±.004[0.10]		±.004[0.10]		±.004[0.10]	±.004[0.10]				+ .004 [0.10] - .008 [0.20]	+ .004 [0.10] - .008 [0.20]
PLCC-20P-T	.200[5.08]	.613[15.57]	.200[5.08]	.613[15.57]	.400[10.16]	.400[10.16]	.207[5.26]	.107[2.72]	.107[2.72]	.362[9.20]	.362[9.20]
PLCC-28P-T	.300[7.62]	.713[18.11]	.300[7.62]	.713[18.11]	.500[12.70]	.500[12.70]	.207[5.26]	.107[2.72]	.107[2.72]	.462[11.74]	.462[11.74]
PLCC-32P-T	.300[7.62]	.701[17.81]	.400[10.16]	.795[20.19]	.500[12.70]	.600[15.24]	.201[5.11]	.101[2.57]	.098[2.49]	.462[11.74]	.562[14.28]
PLCC-44P-T	.500[12.70]	.913[23.19]	.500[12.70]	.913[23.19]	.700[17.78]	.700[17.78]	.207[5.26]	.107[2.72]	.107[2.72]	.662[16.81]	.662[16.81]
PLCC-52P-T	.600[15.24]	1.060[26.92]	.600[15.24]	1.060[26.92]	.800[20.32]	.800[20.32]	.230[5.84]	.130[3.30]	.130[3.30]	.763[19.38]	.763[19.38]
PLCC-68P-T-2	.800[20.32]	1.217[30.92]	.800[20.32]	1.217[30.92]	1.000[25.40]	1.000[25.40]	.209[5.31]	.109[2.77]	.109[2.77]	.963[24.46]	.963[24.46]
PLCC-84P-T-2	1.000[25.40]	1.417[35.99]	1.000[25.40]	1.417[35.99]	1.200[30.48]	1.200[30.48]	.209[5.31]	.109[2.77]	.109[2.77]	1.163[29.54]	1.163[29.54]
PLCC-100P-T	1.200[30.48]	1.663[42.24]	1.200[30.48]	1.663[42.24]	1.400[35.56]	1.400[35.56]	.207[5.26]	.132[3.35]	.132[3.35]	1.363[34.62]	1.363[34.62]

STANDARD FCI PART NUMBER	OLD BERG PART NUMBER	JEDEC PKG. NUMBER	PERFORMANCE DATA			QTY. PER TUBE
			INSERTION FORCE (LBF. MAX.)	EXTRACTION FORCE (LBF. MIN.)	WEIGHT (OUNCES)	
PLCC-20P-T	69394-020	MO-047 AA	8.2	2.5	.074	37
PLCC-28P-T	69394-028	MO-047 AB	7.0	3.3	.097	32
PLCC-32P-T	69394-032	MO-052 AE	11.5	4.1	.098	28
PLCC-44P-T	69394-044	MO-047 AC	17.0	4.4	.144	25
PLCC-52P-T	69394-052	MO-047 AD	18.2	4.2	.199	21
PLCC-68P-T-2	69394-068	MO-047 AE	26.0	6.6	.223	18
PLCC-84P-T-2	69394-084	MO-047 AF	32.0	8.5	.300	16
PLCC-100P-T	---	MO-047 AG	31.0	9.8	.386	---

NOTES:

- MATERIALS:
 - A. CONTACT MATERIAL: PHOSPHOR BRONZE
 - B. CONTACT PLATING: 150u" MIN. TIN-LEAD OVER 40u" MIN. NICKEL
 - C. INSULATOR: PPS, HIGH TEMP., UL94V-0
- PERFORMANCE:
 - A. TEMPERATURE RANGE: -55°C TO 125°C
 - B. CONTACT RESISTANCE: 20 MILLIOHMS MAX.
 - C. INSERTION FORCE: SEE TABLE
 - D. EXTRACTION FORCE: SEE TABLE
 - E. DIELECTRIC WITHSTANDING VOLTAGE: 600 VOLTS RMS FOR 60 SECONDS
- GENERAL
 - A. THESE SOCKETS ARE DESIGNED FOR USE WITH PLASTIC LEADED CHIP CARRIERS (PLCC'S) THAT MEET THE DIMENSIONAL REQUIREMENTS OF JEDEC PUBLICATION 95, FOR PACKAGE NUMBERS MO-047 AA-AH (SQUARE PACKAGES) AND MO-052 AA-AE (RECTANGULAR PACKAGES).
 - ④ FCI logo location

mat'l. code		tolerances unless otherwise specified		CUSTOMER COPY		Electronics www.fciconnect.com	
ltr	ecn no	dr	date	linear	.XX ±.01[0.3]	projection	title
c					.XXX ±.008 [0.20]		THROUGH HOLE PLCC SOCKET
				angles	XXXX ±.0020[0.051]		product family
				dr	D. WOLFORD 5/19/00	INCH/MM	size
				enrg	A. VASBINDER 5/19/00	scale	dwg no
				chr	A. VASBINDER 5/19/00	1:1	59050
				appd	A. VASBINDER 5/19/00		code
sheet index	revision sheet						sheet 2 of

1 | 2 | 3 | 4

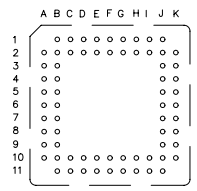
ACAD cage code 22526

Tous droits strictement réservés. Reproduction ou communication à des tiers sans autorisation écrite du propriétaire. Property of FCI. Droits de reproduction FCI.

All rights strictly reserved. Reproduction or communication to any third party without written authority from the proprietor. Property of FCI. Copyright FCI.

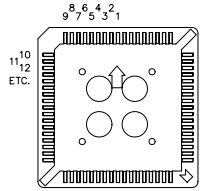
PLCC DEVICE POSITION	BOARD HOLE POSITION									PLCC DEVICE POSITION	BOARD HOLE POSITION								
	20 POS.	28 POS.	32 POS.	44 POS.	52 POS.	68 POS.	84 POS.	100 POS.	68 POS.		84 POS.	100 POS.	68 POS.	84 POS.	100 POS.				
1	1C	2D	2D	2E	1E	1F	1G	1H	53	6J	13L	15I							
2	2C	1C	1C	1D	2E	2F	2G	2H	54	5K	12M	14I							
3	1B	2C	2C	2D	1D	1E	1F	1G	55	5J	12I	15J							
4	2A	1B	1B	1C	2D	2E	2F	2G	56	4K	11M	14J							
5	2B	2A	2A	2C	1C	1D	1E	1F	57	4J	11L	15K							
6	3A	2B	2B	1B	2C	2D	2E	2F	58	3K	10M	14K							
7	3B	3A	3A	2A	1B	1C	1D	1E	59	3J	10L	15L							
8	4A	3B	3B	2B	2A	2C	2D	2E	60	2K	9M	14L							
9	5B	4A	4A	3A	2B	1B	1C	1D	61	1J	9L	15M							
10	4B	4B	4B	3B	3A	2A	2C	2D	62	2J	8M	14M							
11	5C	5A	5A	4A	3B	2B	1B	1C	63	1I	8L	15N							
12	4C	6B	5B	4B	4A	3A	2A	2C	64	2I	7M	14O							
13	5D	5B	6A	5A	4B	3B	2B	1B	65	1H	7L	14N							
14	4E	6C	7B	5B	5A	4A	3A	2A	66	2H	5M	13O							
15	4D	5C	6B	6A	5B	4B	3B	2B	67	1G	6L	13N							
16	3E	6D	7C	6B	6A	5A	4A	3A	68	2G	5M	12O							
17	3D	5D	6C	7A	6B	5B	4B	3B	69		5L	12N							
18	2E	6E	7D	8B	7A	6A	5A	4A	70		4M	11O							
19	1D	5F	6D	7B	7B	6B	5B	4B	71		4L	11N							
20	2D	5E	7E	8C	8A	7A	6A	5A	72		3M	10O							
21		4F	6F	7C	9B	7B	6B	5B	73		3L	10N							
22		4E	6E	8D	8B	8A	7A	6A	74		2M	9O							
23		3F	5F	7D	9C	8B	7B	6B	75		1L	9N							
24		3E	5E	8E	8C	9A	8A	7A	76		2L	8O							
25		2F	4F	7E	9D	9B	8B	7B	77		1K	8N							
26		1E	4E	8F	8D	10A	9A	8A	78		2K	7O							
27		2E	3F	7F	9E	11B	9B	8B	79		1J	7N							
28		1D	3E	8C	8E	10B	10A	9A	80		2J	6O							
29			2F	7H	9F	11C	10B	9B	81		1I	6N							
30			1E	7G	8F	10C	11A	10A	82		2I	5O							
31			2E	6H	9G	11D	11B	10B	83		1H	5N							
32			1D	6G	8G	10D	12A	11A	84		2H	4O							
33				5H	9H	11E	13B	11B	85			4N							
34				5C	8I	10E	12B	12A	86			3O							
35				4H	8H	11F	13C	12B	87			3N							
36				4G	7I	10F	12C	13A	88			2O							
37				3H	7H	11G	13D	13B	89			1N							
38				3G	6I	10G	12D	14A	90			2N							
39				2H	6H	11H	13E	15B	91			1M							
40				1G	5I	10H	12E	14B	92			2M							
41				2G	5H	11I	13F	15C	93			1L							
42				1F	4I	10I	12F	14C	94			2L							
43				2F	4H	11J	13G	15D	95			1K							
44				1E	3I	10K	12G	14D	96			2K							
45					3H	10J	13H	15E	97			1J							
46					2I	9K	12H	14E	98			2J							
47					1H	9J	13I	15F	99			1I							
48					2H	8K	12I	14F	100			2I							
49					1G	8J	13J	15G											
50					2G	7K	12J	14G											
51					1F	7J	13K	15H											
52					2F	6K	12K	14H											

TYPICAL BOARD HOLE PATTERN SHOWING HOLE DESIGNATION CONVENTION (68 I/O SHOWN)



NOTE: THIS VIEW IS FROM THE SOCKET SIDE OF THE BOARD

TYPICAL PLCC SHOWING LEAD NUMBERING CONVENTION (68 I/O SHOWN)



NOTE: THIS VIEW IS FROM THE SOCKET SIDE OF THE BOARD

mat'l. code		tolerances unless otherwise specified		CUSTOMER COPY		 Electronics FCI www.fciconnect.com	
ltr	ecn no	dr	date	linear	.XX ±.01[0.3]	projection	title
B					.XXX ±.008 [0.20]		THROUGH HOLE PLCC SOCKET
				angles	XXXX ±.0020[0.051]	INCH/MM	product family SOCKETS code
				dr	D. WOLFORD 5/19/00		size dwg no
				enr	A. VASBINDER 5/19/00	scale	59050
				chr	A. VASBINDER 5/19/00	1:1	sheet 3 of
				appd	A. VASBINDER 5/19/00		
sheet index	revision sheet						

cage code 22526

ACAD