

# MICRO SWITCH

FREEPORT ILLINOIS, U.S.A  
A DIVISION OF HONEYWELL  
FED. MFG. CODE 91929

# SWITCH - BASIC

CATALOG LISTING

BA-2RV2223-A2

ABS5525

M BA-2RV2223-A2  
PAGE 1 OF 1

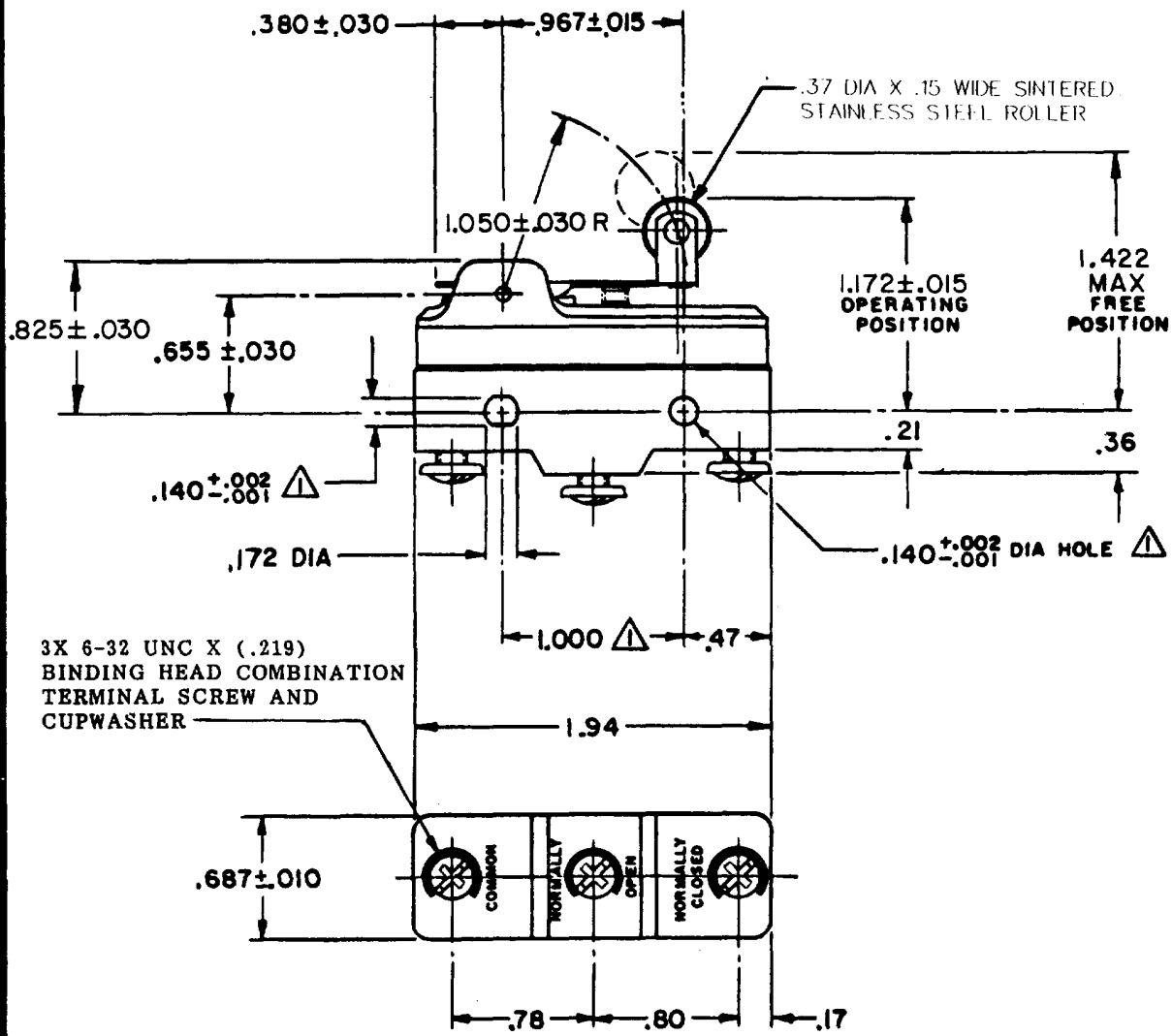
DRAWING NUMBER

ISSUE

REVISIONS

A	CO-70184-G	G J W	7 MAR 92
B	CO-73287	J J O	1 MAY 92
C	CO-73287-J	J A L	22 NOV 93
D	CO-75204B	DAW	1 FEB 94
E	CO-77590	SAD	9 JUN 94
F	C093346	DLT	26 AUG 98
G	0018388	TOP	17 FEB 06

REPLACES X69093-BA  
RELEASE NO. PR-7789  
CHECK  
17 FEB 06  
RJ  
CHECK  
27 MAR 99  
DRAWN  
J A P 23 MAR 98  
FORMTEK  
FO-52848-A



NOTE - MOUNTING HOLES WILL ACCEPT PINS OR SCREWS OF .139 MAX DIA ON 1.000 ± .002 CENTERS

THIS DRAWING COVERS A PROPRIETARY ITEM AND IS THE PROPERTY OF MICRO SWITCH, A DIVISION OF HONEYWELL. THIS DRAWING IS NOT TO BE COPIED OR USED WITHOUT THE APPROVAL OF MICRO SWITCH.

THIRD ANGLE PROJECTION

CHARACTERISTICS	
OPERATING FORCE	----- 8 OZ MAX
RELEASE FORCE	----- 1 1/2 OZ MIN
DIFFERENTIAL TRAVEL	----- .045 MAX
OVERTRAVEL	----- .030 MIN

ELECTRICAL DATA	
CONTACT ARRANGEMENT S P D T	
20A-125, 250 OR 480 VAC; 10A-125 VAC "L"	
1HP-125 VAC; 2HP-250 VAC	
CODE L23 1/2A-125 VDC; 1/4A-250 VDC	
L288	
L308	20(3)A 250V ~ T85 5E4
L315	

SCALE	FULL			
DO NOT SCALE PRINT				
TOLERANCES				
APPLY TO DESIGN UNITS. CONVERSIONS ARE ONLY FOR REFERENCE. UNLESS NOTED, TOLERANCES ARE 2				
	ONS.	TOL.	ONS.	TOL.
	mm	mm/in	in	mm/in
NO PLACES	F	1/64	F	0.0100
ONE PLACE	F, X	0.4/0.10	F, X	0.01/0.10
TWO PLACES	F, XX	0.16/0.05	F, XX	0.001/0.10
THREE PLACES	F, XXX	0.16/0.05	F, XXX	0.13/0.005
ANGLES				
DESIGN UNITS	<input type="checkbox"/> METRIC		<input checked="" type="checkbox"/> US CUSTOMARY	
WEIGHT				