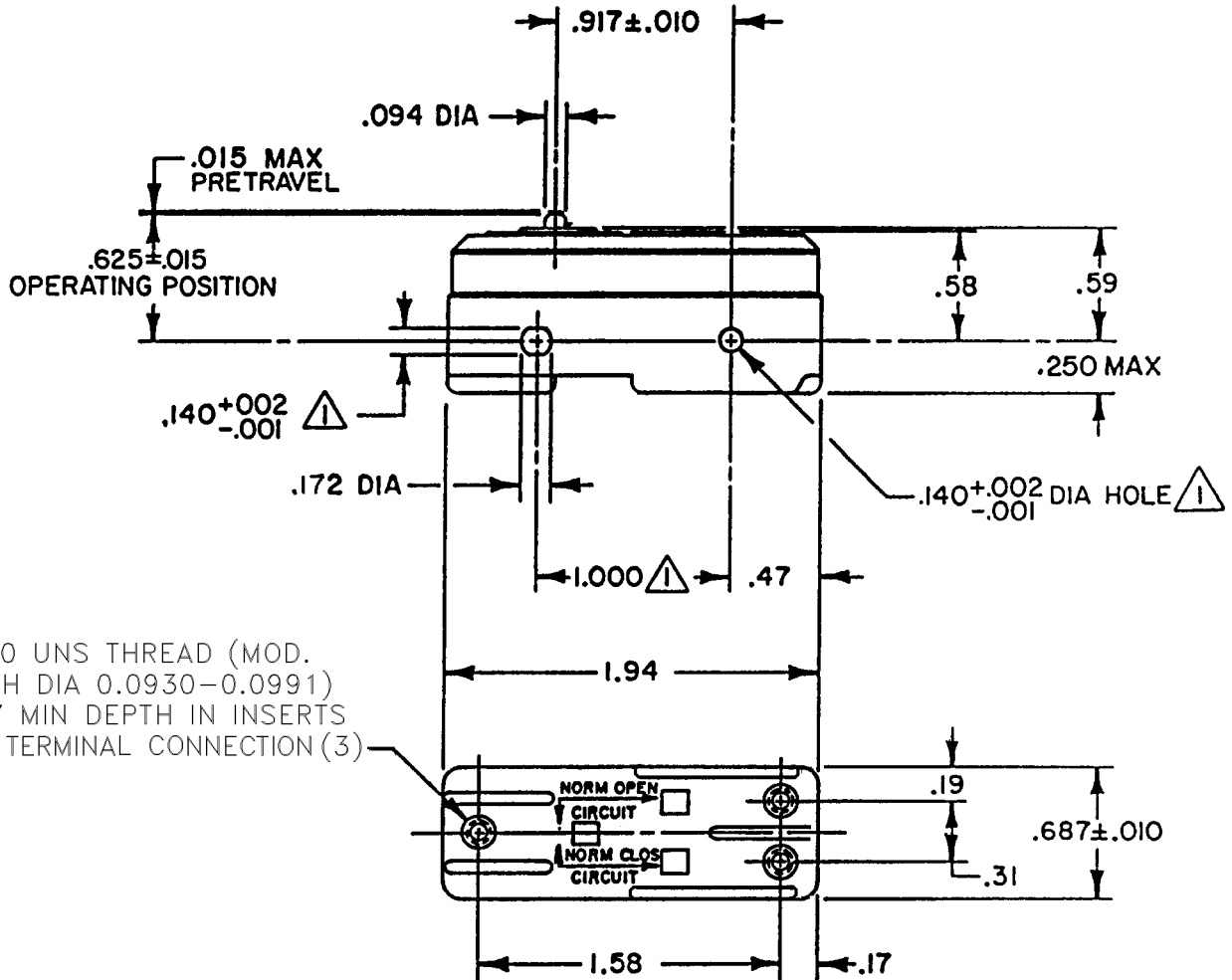


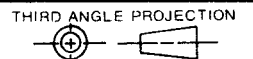
DRAWING NUMBER **BM-1R059** PAGE 1 OF 1
 ISSUE **M** 5
 REVISIONS
 A CO-77592 DAW 15 AUG 94
 B CO-80462 JALA 11 JUN 95
 C CO-94212-A JJA 28 JULY 99
 D 0035412 BS 03DEC07
 CHECK 03DEC07 ASD
 CHECK 31 OCT 90
 CHECK 26 OCT 90
 WJC
 RASTER DRAWN
 RELEASE NO. PR-18716 REPLACES



4-40 UNS THREAD (MOD. PITCH DIA 0.0930-0.0991)
 .157 MIN DEPTH IN INSERTS FOR TERMINAL CONNECTION (3)

NOTE
 ① MOUNTING HOLES WILL ACCEPT PINS OR SCREWS OF .139 MAX DIA ON 1.000±.002 CENTERS
 2 - CONTACT MATERIAL - GOLD OVER NICKEL PLATE ON FINE SILVER

THIS DRAWING COVERS A PROPRIETARY ITEM AND IS THE PROPERTY OF MICRO SWITCH, A DIVISION OF HONEYWELL. THIS DRAWING IS NOT TO BE COPIED OR USED WITHOUT THE APPROVAL OF MICRO SWITCH.



CHARACTERISTICS	ELECTRICAL DATA	SCALE FULL	DO NOT SCALE PRINT
OPERATING FORCE ----- 14-22 OZ	CONTACT ARRANGEMENT S P D T	UNLESS OTHERWISE SPECIFIED TOLERANCES ARE	
DIFFERENTIAL FORCE ----- 1-5 OZ	L102	ONE PLACE (.0) ± .030	TWO PLACE (.00) ± .015
DIFFERENTIAL TRAVEL -- .0003 - .0008	22A 125, 250 OR 480 VAC 1/4 HP 125 VAC, 1/2 HP 250 VAC	THREE PLACE (.000) ± .005	ANGLES ±
OVERTRAVEL ----- .010 MIN	L288 L315 L318	WEIGHT .050 LB	
	22A 250V ~ T85 5E4		