

## **K77 Series Right Angle PCB Mount SCSI**


### **Features**



- 50 and 68 Position Right Angle Small Computer System Interface Receptacles
- Optional Cable Latches
- Single or Stacked
- CSA/NRTL Certified File No. LR78160

### **Performance Specifications**

#### **Materials and Finish**

**Housing Material**   
PBT, UL94V-0 Rated, Black Color

**Contact Material**

Phosphor Bronze

**Contact Plating**

Gold Plating over Nickel

#### **Electrical Characteristics**

**Insulation Resistance**

1000 Megohms Min.

**Dielectric Withstanding Voltage**

500 VAC for 1 Minute

**Contact Resistance**

25 Milliohms Max.

**Current Rating**

1.0 Amp @ 30V

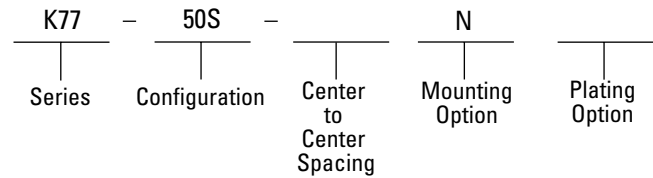
**Operating Temperature**

-55°C to +85°C

## **SCSI**

### **K77 Series**

### **Ordering Information**



**Series**

K77 - Right Angle SCSI Connector

**Configuration**

50S - 50 Socket Contacts

68S - 68 Socket Contacts

50S/50S - 50 Socket Contacts over 50 Socket Contacts

68S/68S - 68 Socket Contacts over 68 Socket Contacts

**Center to Center Spacing**

Blank - Single

D - Stacked 0.5" (12.70mm)

**Mounting Option**

N-Board Locks and 4-40 Riveted Threaded Inserts

W-Board Locks and 2-56 Riveted Threaded Inserts

NL-Board Locks, 4-40 Threaded Inserts, Cable Latches

WL-Board Locks, 2-56 Threaded Inserts, Cable Latches

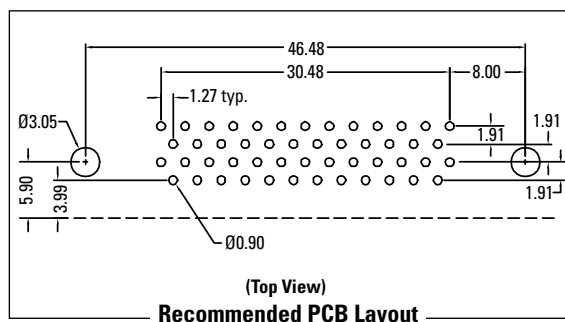
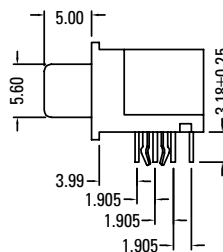
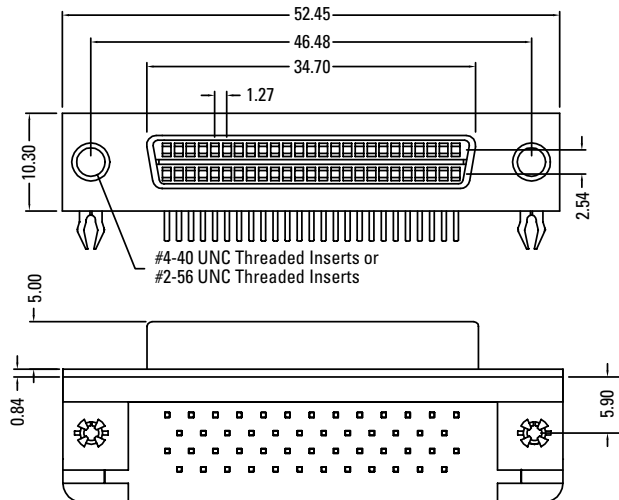
**Plating Option**

Standard	Gold flash over nickel on contacts. Tin/lead over nickel on soldertails
30	30μ" gold over nickel on mating end of contacts. Tin/lead over nickel on soldertails.

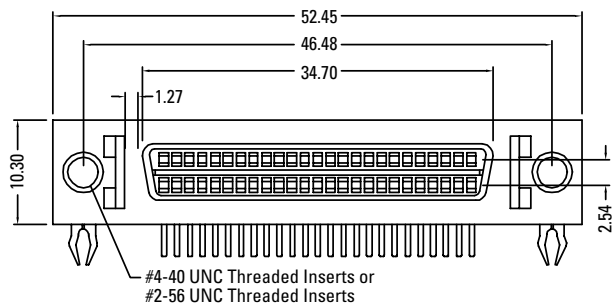
**K77 Series Dimensions**

Dimensions in mm

**K77-50S-N, K77-50S-W**



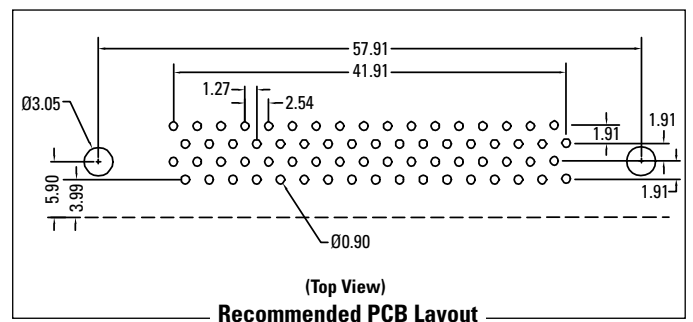
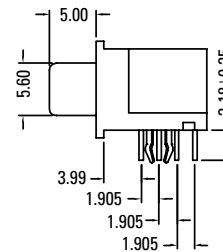
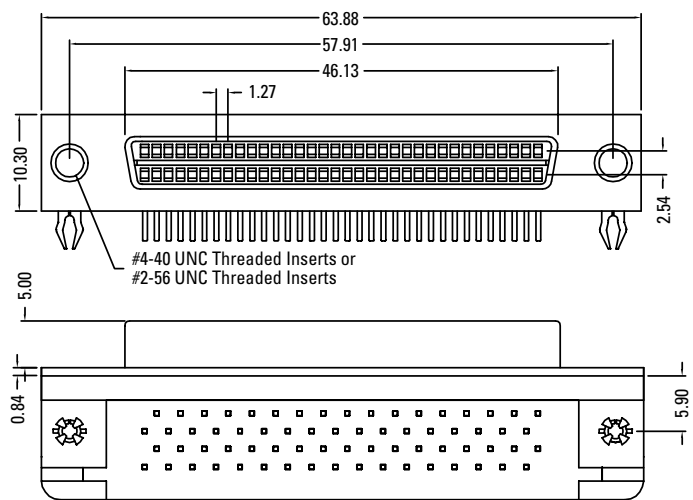
**K77-50S-NL, K77-50S-WL**



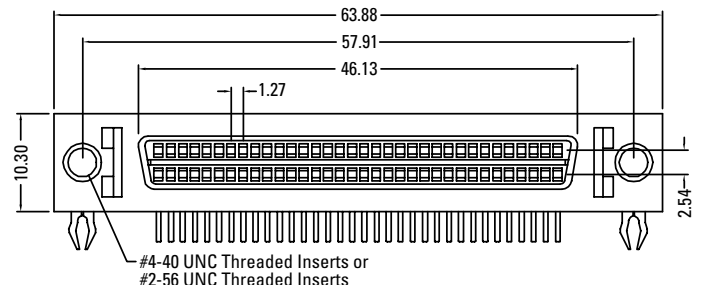
**K77 Series Dimensions**

Dimensions in mm

**K77-68S-N, K77-68S-W**



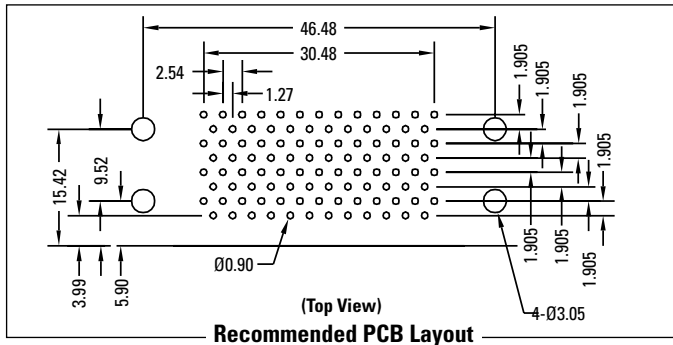
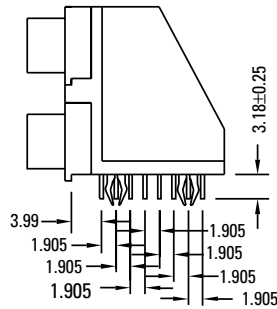
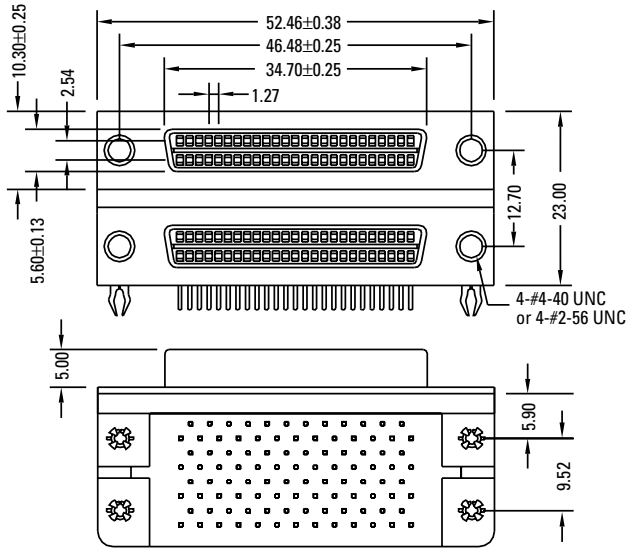
**K77-68S-NL, K77-68S-WL**



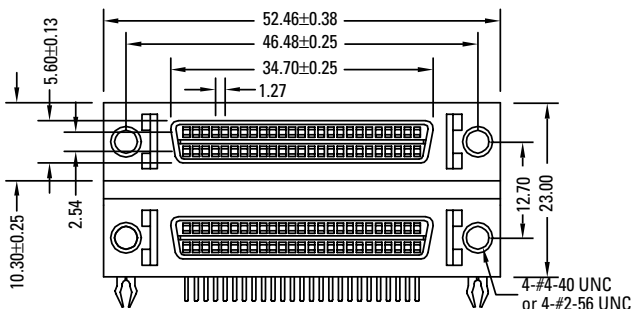
**K77 Series Dimensions**

Dimensions in mm

**K77-50S/50S-DN, K77-50S/50S-DW**



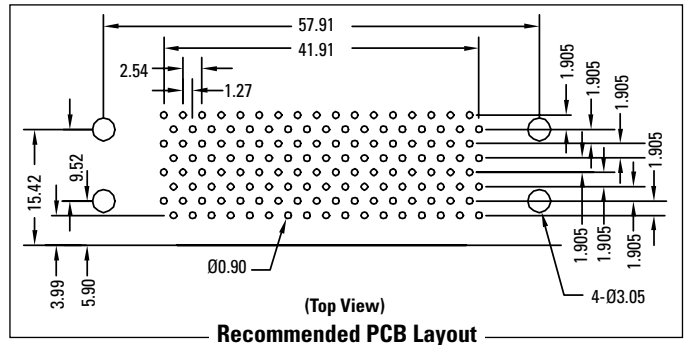
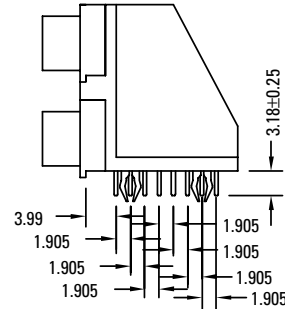
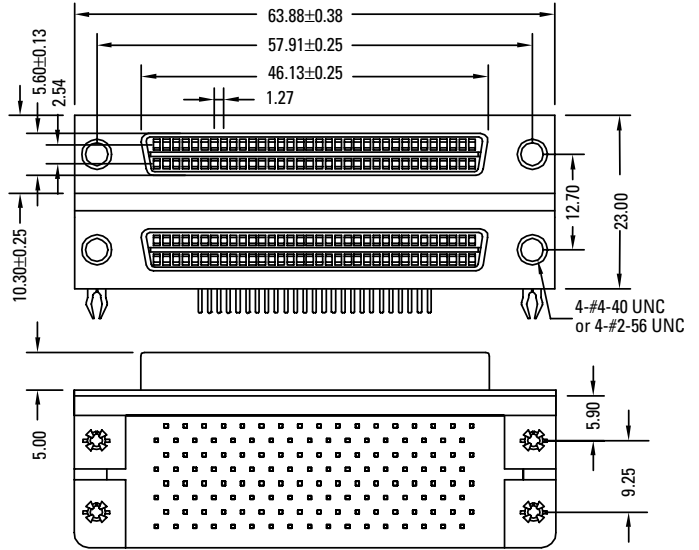
**K77-50S/50S-DNL, K77-50S/50S-DWL**



**K77 Series Dimensions**

Dimensions in mm

**K77-68S/68S-DN, K77-68S/68S-DW**



**K77-68S/68S-DNL, K77-68S/68S-DWL**

