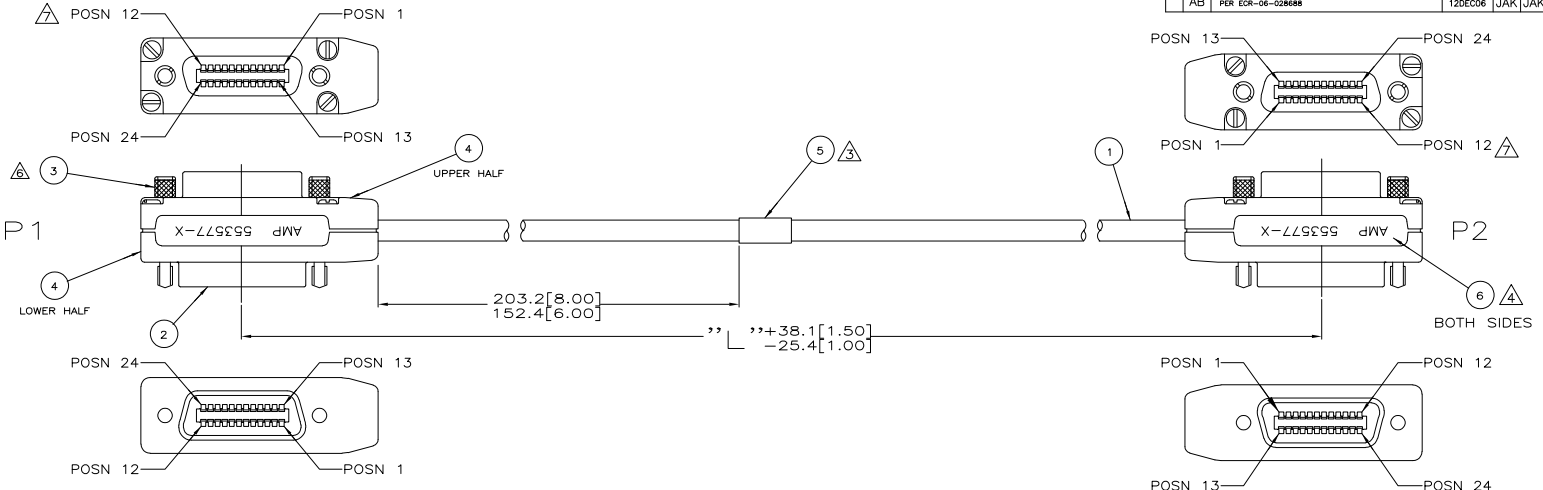


THIS DRAWING IS UNPUBLISHED. RELEASED FOR PUBLICATION
 © COPYRIGHT BY TYCO ELECTRONICS CORPORATION. ALL RIGHTS RESERVED.

LOC	DIST	REVISIONS		DATE	BY	APP'D
CF	39	P	LTR	DESCRIPTION	12DEC06	JAK/JAK
		AB		PER ECR-06-02868		



P1 POSN	COLOR	P2 POSN
1	WHT/BLK/BRN	1
2	WHT/BLK/RED	2
3	WHT/BLK/ORN	3
4	WHT/BLK/YEL	4
5	BLACK	5
6	BROWN	6
7	RED	7
8	ORANGE	8
9	YELLOW	9
10	GREEN	10
11	BLUE	11
12	OUTER DRAIN	12
13	WHT/BLK/GRN	13
14	WHT/BLK/BLU	14
15	WHT / GRY	15
16	WHITE	16
17	VIOLET	17
18	WHT / BRN	18
19	WHT / RED	19
20	WHT / ORN	20
21	WHT / YEL	21
22	WHT / GRN	22
23	WHT / BLU	23
24	WHT / BLK WHT / VIO INNER DRAIN	24

PART NUMBER	"L"	LABEL
553577-1	500[19.68]	AMP 553577-1
553577-2	1000[39.37]	AMP 553577-2
553577-3	2000[78.4]	AMP 553577-3
553577-4	3000[118.11]	AMP 553577-4
553577-5	4000[157.48]	AMP 553577-5
553577-6	6000[236.22]	AMP 553577-6
553577-7	8000[314.96]	AMP 553577-7
1-553577-5	1000[39.37]	N/A
1-553577-6	2000[78.4]	N/A
1-553577-7	260[10.30]	AMP 1-553577-7

- OVERALL ASSEMBLY SHALL MEET AMP SPEC 108-6040.
 - 100% ELECTRICAL CONTINUITY TEST REQ'D.
- ⚠ LABEL TO BE LOCATED IN AREA SHOWN AND READ AS FOLLOWS:
- YYWW
- ⚠ FOR LABEL (ITEM 6) INFORMATION, SEE TABLE.
- ⚠ WHT/BLK, WHT/VIO & INNER DRAIN SHALL BE TERMINATED TO POSITION 24, BOTH ENDS OF ASSY.
- ⚠ JACKSCREW (ITEM 3) SHALL BE INSERTED FROM RECEPTACLE SIDE OF EMI SHIELD (ITEM 4).
- ⚠ PIN 12 OF EACH CONNECTOR IS ALSO CONNECTED TO THE BACKSHELL VIA THE BRAID TERMINATOR.

LABEL	6
LABEL, WRAP AROUND	5
EMI SHIELD KIT	4
JACKSCREW, BACK-TO-BACK	3
HOUSING ASSY, BACK TO BACK	2
CABLE, CROSSTALK REDUCED	1
DESCRIPTION	ITEM NO.

THIS DRAWING IS A CONTROLLED DOCUMENT.

APPROVED	12-30-97	OK	12-30-97
DESIGNED	12-30-97	OK	12-30-97
PRODUCT SPEC	12-30-97	OK	12-30-97

TYCO Electronics Corporation
 Harrisburg, PA 17105-3608

CABLE ASSY, 26 POS SLIMLINE PLUG-V.35 RECPT

SIZE: A2
 CAGE CODE: 00779
 DRAWING NO: C-553577

CUSTOMER DRAWING
 SCALE: NTS
 SHEET: 1 of 1
 REV: AB

AMP 1471-9 REV 31MM2000

553577-3577