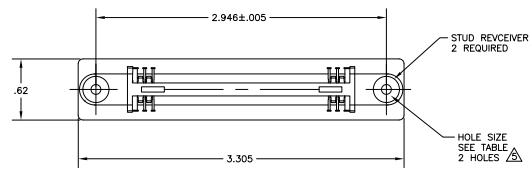
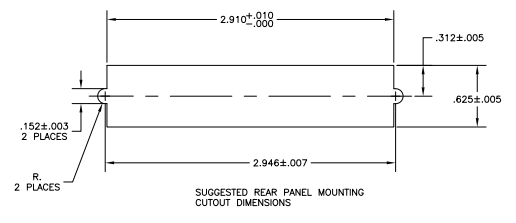
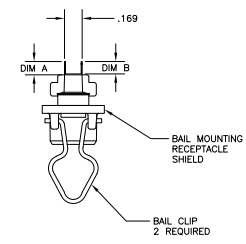
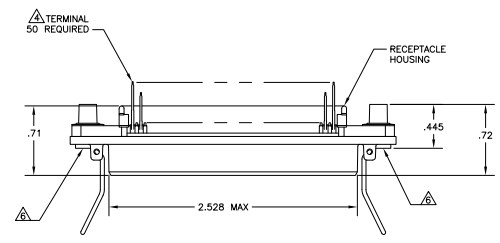


THIS DRAWING IS UNPUBLISHED. REVISIONS FOR VARIATION. ALL RIGHTS RESERVED.

REV	DATE	DESCRIPTION	BY	APP'D
00				
R		REVISED FOR ECO-07-04676	7/20/07	ZMR/WLM



1. THE CONTACT SURFACES OF THE TERMINALS ARE COATED WITH LUBRICANT.
 2. ALL DIMENSIONS SHOWN ARE FOR REFERENCE ONLY UNLESS OTHERWISE SPECIFIED.
- △ MATERIAL:
HOUSING - THERMOPLASTIC, BLACK.
TERMINAL - PHOSPHOR BRONZE PLATED WITH EITHER .000030 MIN GOLD PLATE OR GOLD FLASH OVER .000030 MIN PALLADIUM NICKEL PLATE ON CONTACT MATING SURFACE. 0001200 MIN TIN-LEAD PLATE ON TAILS OVER .000050 MIN NICKEL UNDERPLATE OVER ENTIRE TERMINAL.
STUD RECEIVER - STAINLESS STEEL
BAIL CLIP - STAINLESS STEEL
SHIELD - NICKEL PLATED DIE CASTING.
- △ CENTER-TO-CENTER SPACING OF TERMINALS IS .085.
- △ HOLES TO BE TAPPED AFTER PLATING.
- △ OBSOLETE.



.232 + PANEL THICKNESS	.197 + PCB THICKNESS	4-40	.185	.200	554216-4
PANEL SIDE	PCB SIDE	UNC-2B	.120	.135	554216-3
RECOMMENDED HARDWARE FOR SC51 (PAN HEAD SCREW LENGTH)	HOLE SIZE	DIM B	DIM A	PART NO	

THIS DRAWING IS A CONTROLLED DOCUMENT.

DATE	12/18/07	BY	SEAN
DATE	12/18/07	BY	MELISSA
DATE	12/18/07	BY	SEAN

Ypsilanti Electronics Corporation
Harrisburg, PA 17105-3608

RCPT ASSY, 50 POSN, VERT MTG, SHLD, BAIL, LK, CHAMP

SEE USE SIZE DRAWING NO. A1 00779 (Q)=554216

CUSTOMER DRAWING