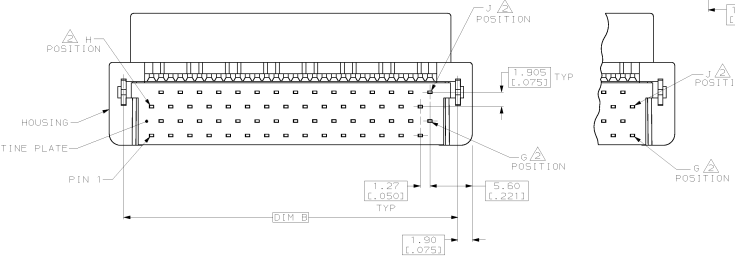
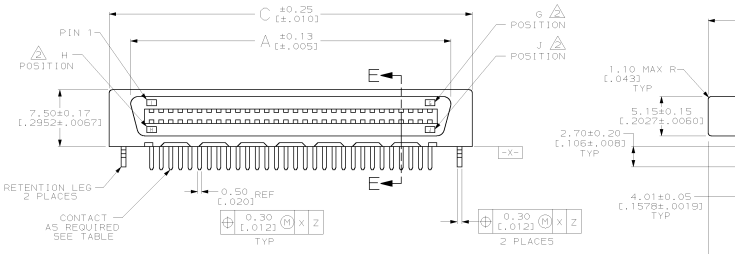
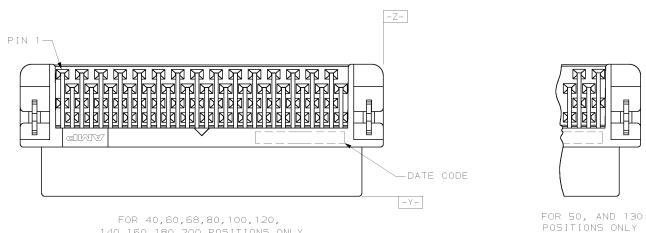


REV	DATE	DESCRIPTION	DATE	APPD
00		REVISED PER EC 0513-0485-03	10MAR04	JR

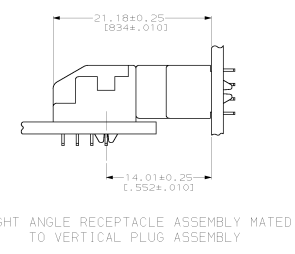
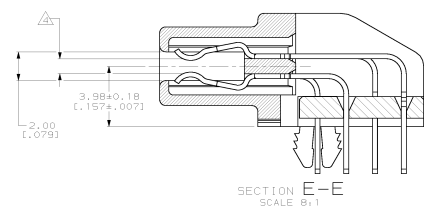
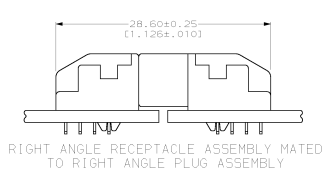
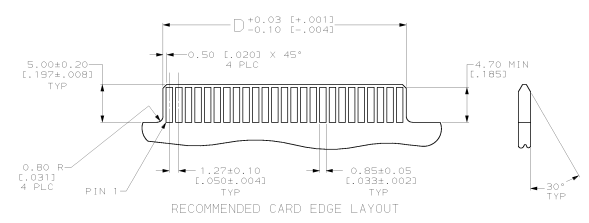
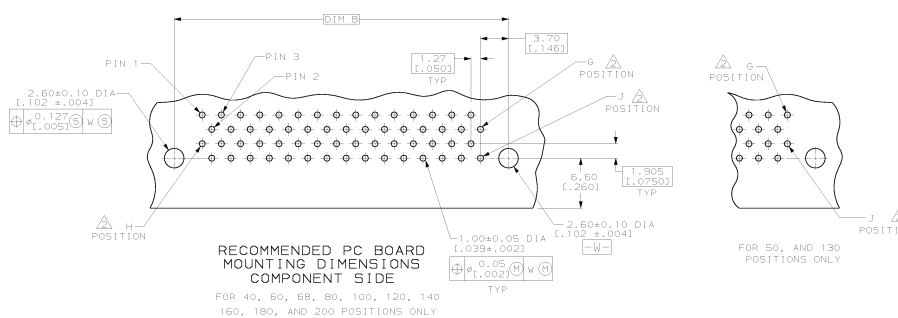
- △ HOUSING & TINE PLATE - LIQUID CRYSTAL POLYMER (LCP), UL 94V-0, BLACK.
- △ 6, J, and H INDICATES NUMBER OF POSITION MARKED ON ASSEMBLY. ALSO SEE TABLE.
- 3. CONNECTOR SOLDER TAILS WILL ACCOMMODATE PRINTED CIRCUIT BOARD THICKNESS OF 0.80 TO 1.60 (.031 TO .063).
- △ CONNECTOR WILL ACCOMMODATE MATING PRINTED CIRCUIT BOARD OF 1.60±0.07 (.063±.003)
- △ RETENTION LEGS NOT PRESENT.
- △ OBSOLETE PART NUMBER.
- △ CONTACTS - PHOSPHOR BRONZE PLATED WITH MINIMUM GOLD THICKNESS (SEE TABLE) IN CONTACT AREA AND 0.0038 (.000150) MINIMUM THICK TIN-LEAD ON SOLDER TINES OVER 0.00127 (.000050) MINIMUM THICK NICKEL UNDERPLATE.
- △ RETENTION LEGS - BRASS PLATED WITH 0.0038 (.000150) MINIMUM TIN-LEAD OVER 0.00127 (.000050) MINIMUM NICKEL UNDERPLATE.
- △ RETENTION LEGS - BRASS PLATED WITH 0.0038 (.000150) MINIMUM TIN OVER 0.00127 (.000050) MINIMUM NICKEL UNDERPLATE.



PRELIMINARY NOT RELEASED FOR PRODUCTION	2.55 (.100)	43.61 (1.717)	53.11 (2.091)	49.31 (1.941)	47.45 (1.868)	34	68	35	0.00076 (.000030)	68	5-557101-7
△△△	3.10 (.122)	76.63 (3.017)	86.13 (3.391)	82.33 (3.242)	80.47 (3.168)	60	120	61	0.00076 (.000030)	120	5-557101-6
△△△	3.10 (.122)	32.18 (1.267)	41.68 (1.641)	37.88 (1.492)	36.02 (1.418)	25	50	26	0.00076 (.000030)	50	5-557101-5
△△△	3.10 (.122)	25.83 (1.017)	35.33 (1.391)	31.53 (1.242)	29.67 (1.168)	20	40	21	0.00076 (.000030)	40	5-557101-4
△△△	3.10 (.122)	114.73 (4.517)	124.23 (4.891)	120.43 (4.741)	118.57 (4.668)	90	180	91	0.00076 (.000030)	180	5-557101-3
△△△	3.10 (.122)	89.33 (3.517)	98.83 (3.891)	95.03 (3.742)	93.17 (3.668)	70	140	71	0.00076 (.000030)	140	4-557101-9
△△△	3.10 (.122)	127.43 (5.017)	136.93 (5.391)	133.13 (5.242)	131.27 (5.168)	100	200	101	0.00076 (.000030)	200	4-557101-1
△△△	3.10 (.122)	102.03 (4.017)	111.53 (4.391)	107.73 (4.242)	105.87 (4.168)	80	160	81	0.00076 (.000030)	160	3-557101-7
△△△	3.10 (.122)	-	92.48 (3.641)	88.68 (3.492)	86.82 (3.418)	65	130	66	0.00076 (.000030)	130	3-557101-3
△△△	3.10 (.122)	76.63 (.122)	86.13 (.122)	82.33 (.122)	80.47 (.122)	60	120	61	0.00076 (.000030)	120	2-557101-9
△△△	3.10 (.122)	63.93 (.122)	73.43 (.122)	69.63 (.122)	67.77 (.122)	50	100	51	0.00076 (.000030)	100	2-557101-6
△△△	3.10 (.122)	63.93 (.122)	73.43 (.122)	69.63 (.122)	67.77 (.122)	50	100	51	0.00076 (.000030)	100	2-557101-5
△△△	3.10 (.122)	51.23 (.122)	60.73 (.122)	56.93 (.122)	55.07 (.122)	40	80	41	0.00076 (.000030)	80	2-557101-1
△△△	3.10 (.122)	43.61 (.122)	53.11 (.122)	49.31 (.122)	47.45 (.122)	34	68	35	0.00076 (.000030)	68	1-557101-7
△△△	3.10 (.122)	-	48.03 (.122)	44.23 (.122)	42.37 (.122)	30	60	31	0.00076 (.000030)	60	1-557101-3
△△△	3.10 (.122)	32.18 (.122)	41.68 (.122)	37.88 (.122)	36.02 (.122)	25	50	26	0.00076 (.000030)	50	557101-9
△△△	3.10 (.122)	25.83 (.122)	35.33 (.122)	31.53 (.122)	29.67 (.122)	20	40	21	0.00076 (.000030)	40	557101-5
△△△	3.10 (.122)	-	28.98 (.122)	25.18 (.122)	23.32 (.122)	15	30	16	0.00076 (.000030)	30	557101-1

DO NOT SCALE PRINT. DIMENSIONS SPECIFIED DIMENSIONS IN MM (INCHES) TOLERANCES ON + 3 PLZ DEC - - UNLESS OTHERWISE SPECIFIED	DR 8-21-89 6.363	AMP INCORPORATED MORTON, PA. 17055
MATERIAL	AMPD 12-4-89 J.B. WILKINSON	RECEPTACLE ASSEMBLY, RIGHT ANGLE, BOARD-TO-BOARD, CHAMP™ .050, SERIES 1
FINISH	SEE TABLE	APPLICATION SPEC 114-6045
WEIGHT	SEE TABLE	SIZE D1 00779
		DRAWING NO. 557101
		SCALE 4:1
		SHEET 1 OF 2

REV	DATE	BY	CHK	ZONE	LTR	DESCRIPTION	DATE	APPD
00		AF				SEE SHEET 1		



DO NOT SCALE PRINT, UNLESS SPECIFIED	DR 6-8-89	AMP INCORPORATED HARTFORD, PA. 17333	
DIMENSIONS IN MM (INCHES)	CHK 10-3-89		
TOLERANCES: DIM +	BY PRICE	NAME	
2 PLC DEC #	APPD 12-4-89	RECEPTACLE ASSEMBLY, RIGHT ANGLE, BOARD-TO-BOARD, CHAMP™ .050, SERIES 1	
INCHES #	T. PRIZOLO	DRAWING NO. 557101	
MATERIAL	APPD 12-4-89	SIZE	PAGE COUNT
	J.B. WILKINSON	D	
FINISH	APPLICATION SPEC	WEIGHT	SHEET 2 OF 2
			SCALE 4:1