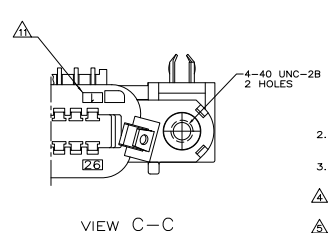
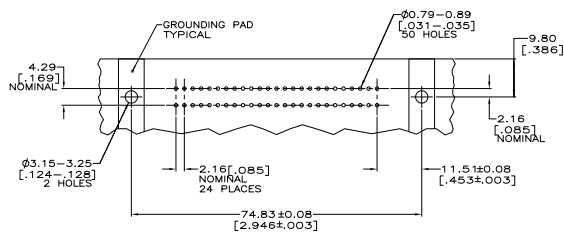
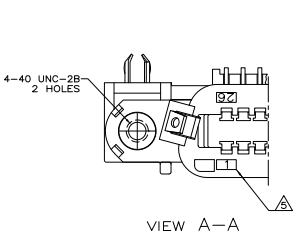
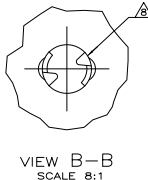
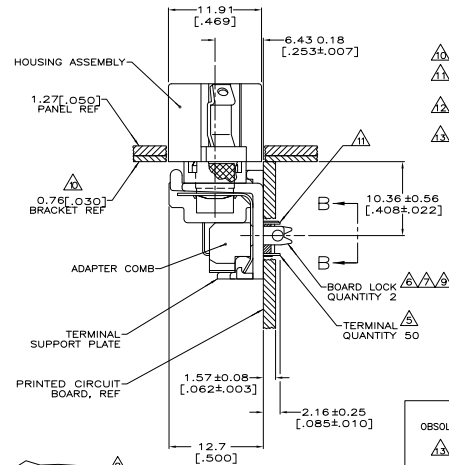
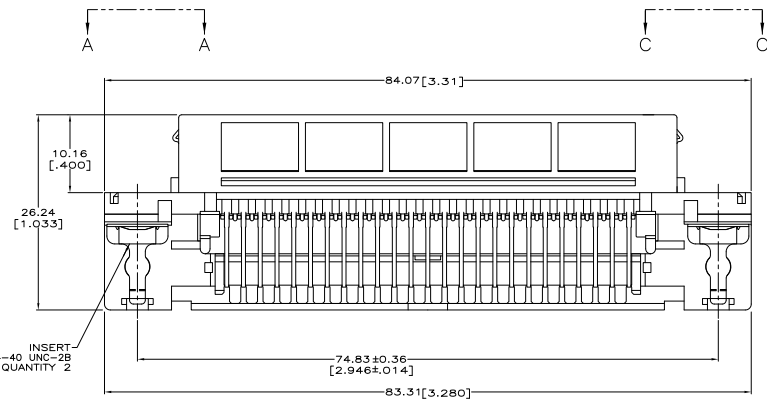


REV	DATE	DESCRIPTION	BY	CHK	APP
GP 00					
B		REVISED FOR ECO-08-027327	DAWPKR	BM	WM
B1		REVISED FOR ECO-09-024627		11NOV09	KK AEG



SUGGESTED PRINTED CIRCUIT BOARD MOUNTING DIMENSIONS SCALE 2:1



SUGGESTED PRINTED CIRCUIT BOARD MOUNTING DIMENSIONS SCALE 2:1

- △ MATERIAL: HOUSING, SUPPORT PLATE & ADAPTER COMB - POLYESTER, BLACK. LATCH - ZINC PLATED CARBON STEEL. INSERT - BRASS. BOARD LOCK - TIN PLATED CARBON STEEL. TERMINALS - HIGH STRENGTH COPPER ALLOY PLATED WITH EITHER 0.76µm [.000030] MIN GOLD PLATE OR GOLD FLASH OVER PALLADIUM NICKEL PLATE, 0.76µm [.000030] MIN TOTAL ON MATING SURFACE, 3.05µm [.000120] MIN TIN PLATE ON TAILS. ALL OVER 1.27µm [.000050] MIN NICKEL UNDERPLATE OVER ENTIRE TERMINAL.
- 2. THE CONTACT SURFACES OF THE TERMINALS ARE COATED WITH LUBRICANT.
- 3. CENTER-TO-CENTER SPACING OF TERMINALS IS 2.16 [.085] NOMINAL.
- △ ALL DIMENSIONS SHOWN ARE MAXIMUM UNLESS OTHERWISE SPECIFIED.
- △ TERMINAL 1 LOCATED IN THIS ROW FOR STANDARD ORIENTATION. SEE VIEW A-A.
- △ BOARD LOCK RETAINS CONNECTOR IN 1.58 [.062] THICK PC BOARD WITHOUT ADDITIONAL HARDWARE.
- △ BOARD LOCK LOCATES CONNECTOR FLUSH WITH TOP OF PC BOARD AND SPRING LOCKS BENEATH.
- △ CYLINDRICAL SHAPE OFFERS 180° OF SOLDERING SURFACE.
- △ SURFACE AREA BELOW PC BOARD SHALL PASS SOLDERABILITY REQUIREMENTS IN ACCORDANCE WITH AMP SPEC 109-11-2. DISCOLORATION, SCRATCHES, SPOTS AND OTHER COSMETIC DEFICIENCIES TYPICAL OF BARREL PLATING PROCESSES ARE ACCEPTABLE PROVIDING PARTS PASS 24 HOUR EXPOSURE AT 95% RH AT 40° C WITHOUT EVIDENCE OF CORROSION.
- △ OPTIONAL BRACKET SUPPLIED BY CUSTOMER.
- △ TERMINAL 1 LOCATED IN THIS ROW FOR REVERSE ORIENTATION. SEE VIEW C-C.
- △ ONE LATCH ONLY, LOCATED AT CIRCUIT 1/26 END, P/N 6116761-5 AND 6116761-6.
- △ OBSOLETE PARTS: OBSOLETE OIS STREAMLINING PER D.RENAUD/D.SINIS

△ OBSOLETE	REVERSE, SEE VIEW C-C	△	△	6116761-6
△	STANDARD, SEE VIEW A-A	△	△	6116761-5
△	REVERSE, SEE VIEW C-C	△	NO LATCHES	6116761-4
△	REVERSE, SEE VIEW C-C	△	AS SHOWN	6116761-3
△ OBSOLETE	STANDARD, SEE VIEW A-A	△	NO LATCHES	6116761-2
△	STANDARD, SEE VIEW A-A	△	AS SHOWN	6116761-1

THIS DRAWING IS A CONTROLLED DOCUMENT.		REV	DATE	DESCRIPTION	PART NUMBER
INCHES	MM (INCHES)	BY	DATE	USE	
UNLESS OTHERWISE SPECIFIED:					
1. DIMENSIONS					
2. TOLERANCES					
3. SURFACE FINISH					
4. MATERIALS					
5. FINISHES					
6. PLATING					
7. TREATMENTS					
8. SPECIAL REQUIREMENTS					
9. DRAWING NO.					
10. DATE					
11. SIZE					
12. SHEET NO.					
13. TOTAL SHEETS					
14. CUSTOMER DRAWING					