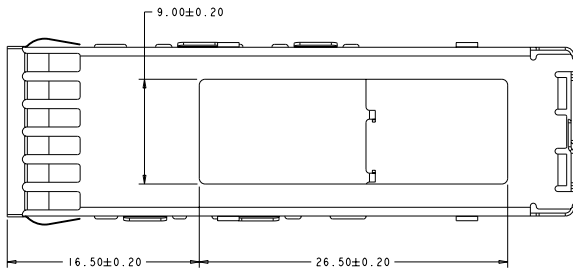
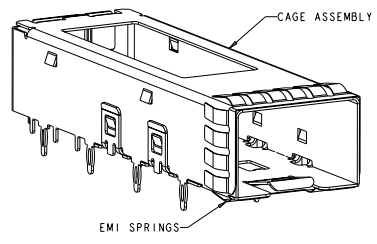
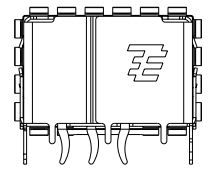
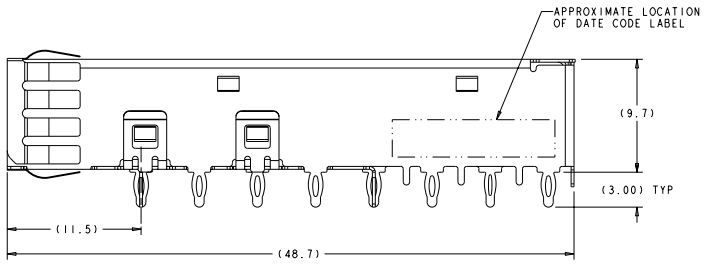
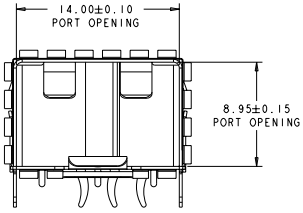
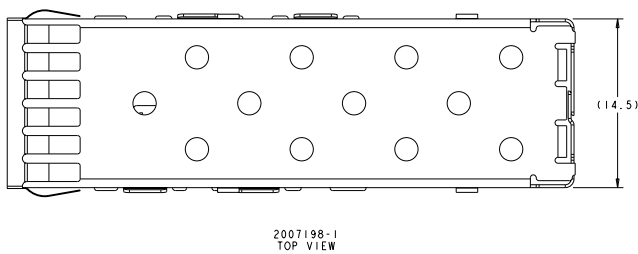
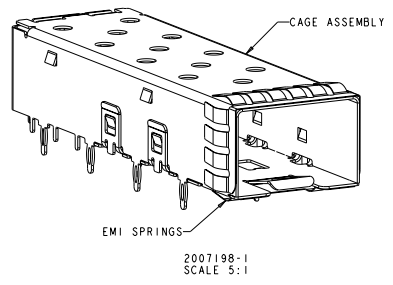


8	7	6	5	4	3	2	1
FILE NUMBER TO IMPROVE	REVISION FOR PUBLICATION						
000000000	00						

REVISED PER ECO-11-004833		DATE	BY	CHKD
B1				



- △ MATERIAL:
CAGE ASSEMBLY - 0.25mm THICK NICKEL SILVER ALLOY.
EMI SPRINGS - COPPER ALLOY.
- △ FINISH
EMI SPRINGS - 0.8um MIN MATTE TIN OVER 0.8um MIN NICKEL.
NON-PLATED EDGES PERMISSIBLE.
- 3. MATES WITH SFP MSA COMPLIANT TRANSCEIVERS.
- △ PADS AND VIAS CHASSIS GROUND.
- △ DATUM AND BASIC DIMENSION ESTABLISHED BY CUSTOMER.
- 6. MINIMUM PC BOARD THICKNESS:
SINGLE SIDED = 1.50 mm
DOUBLE SIDED = 3.00 mm
- △ REFERENCE APPLICATION SPEC. 114-13120, HOLE A, FOR
RECOMMENDED DRILL HOLE DIAMETER AND PLATING THICKNESS.
- △ REFERENCE APPLICATION SPEC. 114-13120, HOLE C, FOR
RECOMMENDED DRILL HOLE DIAMETER AND PLATING THICKNESS.
- 9. NOTE DELETED



HEATSINK OPENING	2007198-2
EMI HOLES	2007198-1
DESCRIPTION	PART NUMBER

THIS DRAWING IS A CONTROLLED DOCUMENT.

REVISED PER ECO-11-004833	DATE	BY	CHKD
000000000	00		

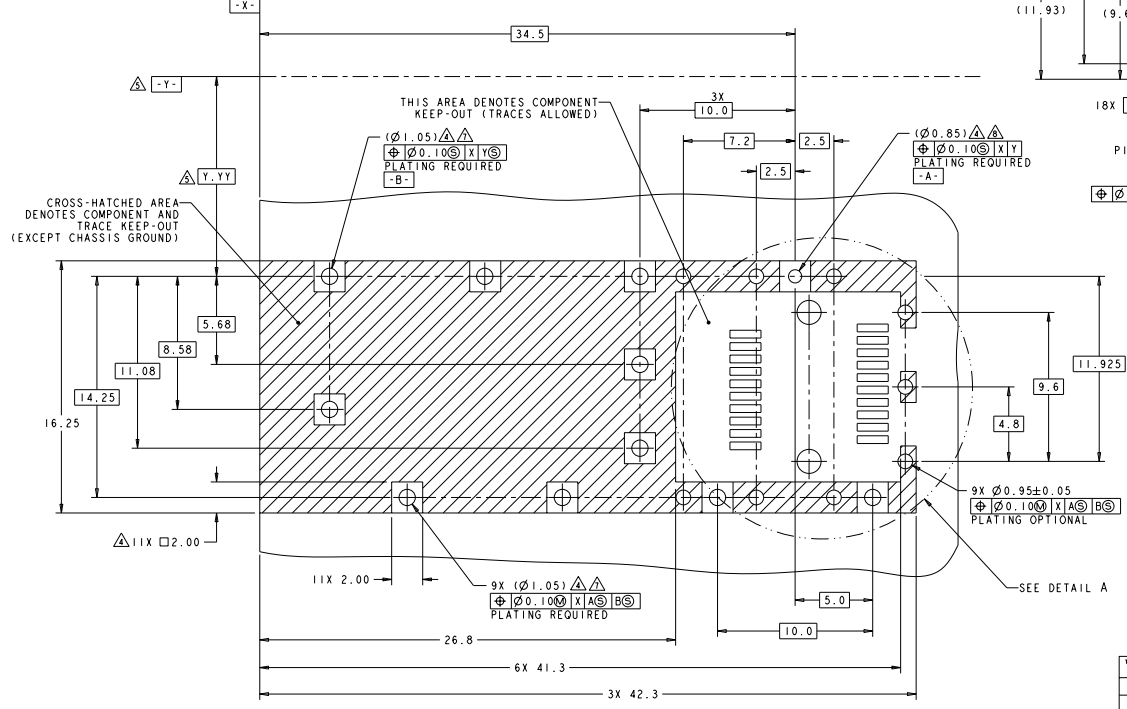
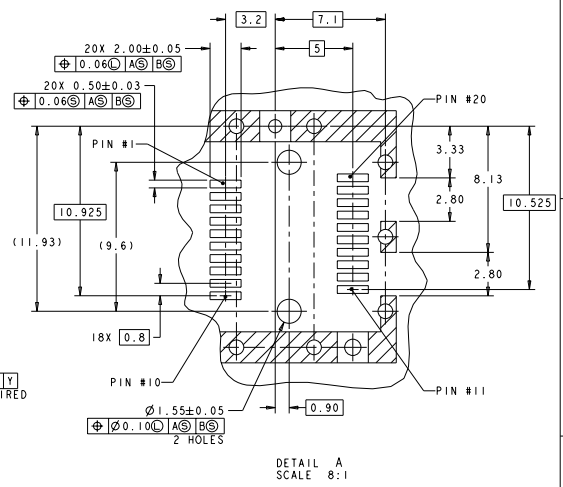
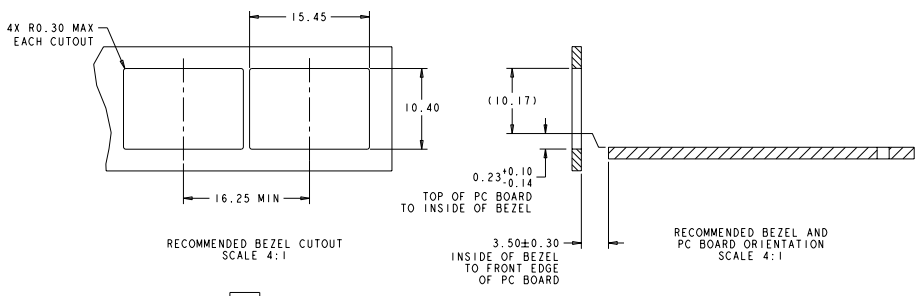
STE TE Connectivity

SFP+ 1X1 CAGE ASSEMBLY
PRESS FIT, EXTERNAL EMI SPRINGS

STATE CASE CODE (DRAWING NO) 00779 ©-2007198

CUSTOMER DRAWING

REV	DATE	DESCRIPTION	BY	CHK	APP
00		SEE SHEET 1			



THIS DRAWING IS A CONTROLLED DOCUMENT.		REV	DATE	DESCRIPTION	BY	CHK	APP
REV 00		07/2007	07/2007	SCHEMATIC	SCHEMATIC		
REV 01		08/2008	07/2007	SCHEMATIC	SCHEMATIC		
REV 02		08/2008	07/2007	SCHEMATIC	SCHEMATIC		
REV 03		08/2008	07/2007	SCHEMATIC	SCHEMATIC		
REV 04		08/2008	07/2007	SCHEMATIC	SCHEMATIC		
REV 05		08/2008	07/2007	SCHEMATIC	SCHEMATIC		
REV 06		08/2008	07/2007	SCHEMATIC	SCHEMATIC		
REV 07		08/2008	07/2007	SCHEMATIC	SCHEMATIC		
REV 08		08/2008	07/2007	SCHEMATIC	SCHEMATIC		
REV 09		08/2008	07/2007	SCHEMATIC	SCHEMATIC		
REV 10		08/2008	07/2007	SCHEMATIC	SCHEMATIC		
REV 11		08/2008	07/2007	SCHEMATIC	SCHEMATIC		
REV 12		08/2008	07/2007	SCHEMATIC	SCHEMATIC		
REV 13		08/2008	07/2007	SCHEMATIC	SCHEMATIC		
REV 14		08/2008	07/2007	SCHEMATIC	SCHEMATIC		
REV 15		08/2008	07/2007	SCHEMATIC	SCHEMATIC		
REV 16		08/2008	07/2007	SCHEMATIC	SCHEMATIC		
REV 17		08/2008	07/2007	SCHEMATIC	SCHEMATIC		
REV 18		08/2008	07/2007	SCHEMATIC	SCHEMATIC		
REV 19		08/2008	07/2007	SCHEMATIC	SCHEMATIC		
REV 20		08/2008	07/2007	SCHEMATIC	SCHEMATIC		
REV 21		08/2008	07/2007	SCHEMATIC	SCHEMATIC		
REV 22		08/2008	07/2007	SCHEMATIC	SCHEMATIC		
REV 23		08/2008	07/2007	SCHEMATIC	SCHEMATIC		
REV 24		08/2008	07/2007	SCHEMATIC	SCHEMATIC		
REV 25		08/2008	07/2007	SCHEMATIC	SCHEMATIC		
REV 26		08/2008	07/2007	SCHEMATIC	SCHEMATIC		
REV 27		08/2008	07/2007	SCHEMATIC	SCHEMATIC		
REV 28		08/2008	07/2007	SCHEMATIC	SCHEMATIC		
REV 29		08/2008	07/2007	SCHEMATIC	SCHEMATIC		
REV 30		08/2008	07/2007	SCHEMATIC	SCHEMATIC		
REV 31		08/2008	07/2007	SCHEMATIC	SCHEMATIC		
REV 32		08/2008	07/2007	SCHEMATIC	SCHEMATIC		
REV 33		08/2008	07/2007	SCHEMATIC	SCHEMATIC		
REV 34		08/2008	07/2007	SCHEMATIC	SCHEMATIC		
REV 35		08/2008	07/2007	SCHEMATIC	SCHEMATIC		
REV 36		08/2008	07/2007	SCHEMATIC	SCHEMATIC		
REV 37		08/2008	07/2007	SCHEMATIC	SCHEMATIC		
REV 38		08/2008	07/2007	SCHEMATIC	SCHEMATIC		
REV 39		08/2008	07/2007	SCHEMATIC	SCHEMATIC		
REV 40		08/2008	07/2007	SCHEMATIC	SCHEMATIC		
REV 41		08/2008	07/2007	SCHEMATIC	SCHEMATIC		
REV 42		08/2008	07/2007	SCHEMATIC	SCHEMATIC		
REV 43		08/2008	07/2007	SCHEMATIC	SCHEMATIC		
REV 44		08/2008	07/2007	SCHEMATIC	SCHEMATIC		
REV 45		08/2008	07/2007	SCHEMATIC	SCHEMATIC		
REV 46		08/2008	07/2007	SCHEMATIC	SCHEMATIC		
REV 47		08/2008	07/2007	SCHEMATIC	SCHEMATIC		
REV 48		08/2008	07/2007	SCHEMATIC	SCHEMATIC		
REV 49		08/2008	07/2007	SCHEMATIC	SCHEMATIC		
REV 50		08/2008	07/2007	SCHEMATIC	SCHEMATIC		
REV 51		08/2008	07/2007	SCHEMATIC	SCHEMATIC		
REV 52		08/2008	07/2007	SCHEMATIC	SCHEMATIC		
REV 53		08/2008	07/2007	SCHEMATIC	SCHEMATIC		
REV 54		08/2008	07/2007	SCHEMATIC	SCHEMATIC		
REV 55		08/2008	07/2007	SCHEMATIC	SCHEMATIC		
REV 56		08/2008	07/2007	SCHEMATIC	SCHEMATIC		
REV 57		08/2008	07/2007	SCHEMATIC	SCHEMATIC		
REV 58		08/2008	07/2007	SCHEMATIC	SCHEMATIC		
REV 59		08/2008	07/2007	SCHEMATIC	SCHEMATIC		
REV 60		08/2008	07/2007	SCHEMATIC	SCHEMATIC		
REV 61		08/2008	07/2007	SCHEMATIC	SCHEMATIC		
REV 62		08/2008	07/2007	SCHEMATIC	SCHEMATIC		
REV 63		08/2008	07/2007	SCHEMATIC	SCHEMATIC		
REV 64		08/2008	07/2007	SCHEMATIC	SCHEMATIC		
REV 65		08/2008	07/2007	SCHEMATIC	SCHEMATIC		
REV 66		08/2008	07/2007	SCHEMATIC	SCHEMATIC		
REV 67		08/2008	07/2007	SCHEMATIC	SCHEMATIC		
REV 68		08/2008	07/2007	SCHEMATIC	SCHEMATIC		
REV 69		08/2008	07/2007	SCHEMATIC	SCHEMATIC		
REV 70		08/2008	07/2007	SCHEMATIC	SCHEMATIC		
REV 71		08/2008	07/2007	SCHEMATIC	SCHEMATIC		
REV 72		08/2008	07/2007	SCHEMATIC	SCHEMATIC		
REV 73		08/2008	07/2007	SCHEMATIC	SCHEMATIC		
REV 74		08/2008	07/2007	SCHEMATIC	SCHEMATIC		
REV 75		08/2008	07/2007	SCHEMATIC	SCHEMATIC		
REV 76		08/2008	07/2007	SCHEMATIC	SCHEMATIC		
REV 77		08/2008	07/2007	SCHEMATIC	SCHEMATIC		
REV 78		08/2008	07/2007	SCHEMATIC	SCHEMATIC		
REV 79		08/2008	07/2007	SCHEMATIC	SCHEMATIC		
REV 80		08/2008	07/2007	SCHEMATIC	SCHEMATIC		
REV 81		08/2008	07/2007	SCHEMATIC	SCHEMATIC		
REV 82		08/2008	07/2007	SCHEMATIC	SCHEMATIC		
REV 83		08/2008	07/2007	SCHEMATIC	SCHEMATIC		
REV 84		08/2008	07/2007	SCHEMATIC	SCHEMATIC		
REV 85		08/2008	07/2007	SCHEMATIC	SCHEMATIC		
REV 86		08/2008	07/2007	SCHEMATIC	SCHEMATIC		
REV 87		08/2008	07/2007	SCHEMATIC	SCHEMATIC		
REV 88		08/2008	07/2007	SCHEMATIC	SCHEMATIC		
REV 89		08/2008	07/2007	SCHEMATIC	SCHEMATIC		
REV 90		08/2008	07/2007	SCHEMATIC	SCHEMATIC		
REV 91		08/2008	07/2007	SCHEMATIC	SCHEMATIC		
REV 92		08/2008	07/2007	SCHEMATIC	SCHEMATIC		
REV 93		08/2008	07/2007	SCHEMATIC	SCHEMATIC		
REV 94		08/2008	07/2007	SCHEMATIC	SCHEMATIC		
REV 95		08/2008	07/2007	SCHEMATIC	SCHEMATIC		
REV 96		08/2008	07/2007	SCHEMATIC	SCHEMATIC		
REV 97		08/2008	07/2007	SCHEMATIC	SCHEMATIC		
REV 98		08/2008	07/2007	SCHEMATIC	SCHEMATIC		
REV 99		08/2008	07/2007	SCHEMATIC	SCHEMATIC		
REV 100		08/2008	07/2007	SCHEMATIC	SCHEMATIC		