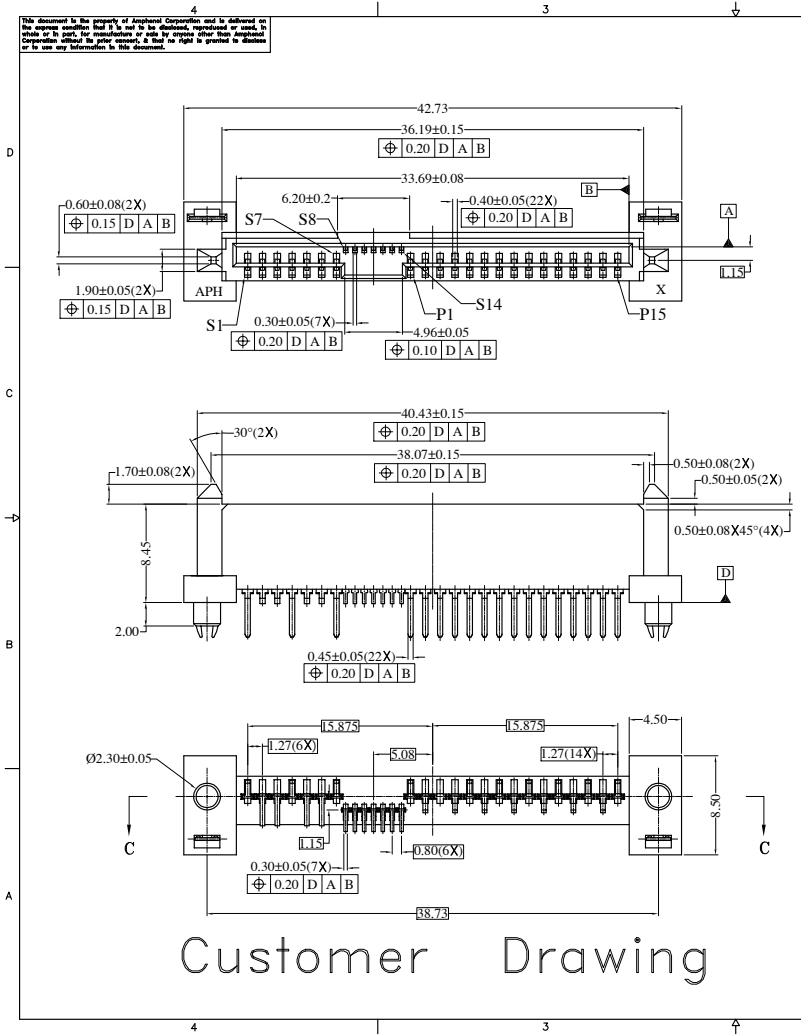


This document is the property of Amphenol Corporation and is delivered on the express condition that it is not to be distributed, reproduced or used, in whole or in part, for manufacture or sale by anyone other than Amphenol Corporation without the prior consent of Amphenol Corporation. Amphenol Corporation reserves the right to modify this document without notice.

REVISIONS				
SYM	ECH	DESCRIPTION	DATE	APPROVED
A1	HKXXXX	Release to customer	10/20/04	IP



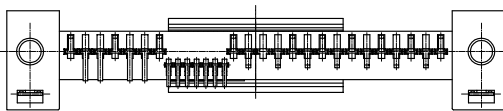
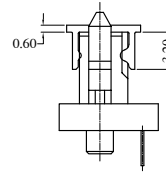
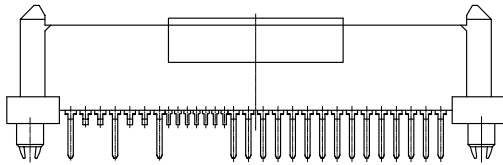
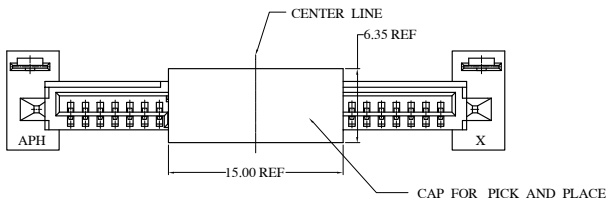
- NOTES:
- MATERIAL HOUSING: LCP G431 30% GLASS FILLED UL94V-0, BLACK, OR EQUIVALENT HIGH TEMPERATURE PLASTIC.
CONTACT: PHOSPHOR BRONZE
PLATING: REFER TO P/N SYSTEM ON MATING AREA
1.27~2.54um NICKEL UNDERPLATE OVERALL
2.54~5.08um PURE TIN ON SOLDER TAIL
SOLDER CLIP: COPPER ALLOY, 2.54~5.08um PURE TIN PLATED OVERALL
1.27~2.54um NICKEL UNDERPLATE
 - ELECTRICAL SPECIFICATION: CURRENT RATING: 1.5A
CONTACT RESISTANCE: 30mΩ MAX.
INSULATOR RESISTANCE: 1000MΩ MIN.
DIELECTRIC WITHSTANDING VOLTAGE: 500 V AC
 - PREMATING AT P4 & P12
 - RECOMMENDED PCB THICKNESS 2.54±0.15
 - ORDER P/N SYSTEM: SAS-F511-001-X-C
- MATING AREA PLATING
1- 0.76um MIN Au.
2- 0.38um MIN Au.
A- Gold FLASH

ITEM	PART NO.	REQ'D	DESCRIPTION
UNLESS OTHERWISE SPECIFIED TOLERANCES			
		APPROVAL DATE	
U.S.		DRAWN	BAN.XIAO 10/20/04
METRIC		CHECKED	IP 10/20/04
.X +/-		DRAWING FILE I	
.XX +/-		PC NUMBER DRAWING SAS-0248-F511-001-C	
.XXX +/-		TITLE	
FRACTIONS +/-		SAS SOCKET HYBRID	
ANGLES +/-		SIZE	
		A3	
FOR MATERIALS AND FINISHES		DRAWING NO.	
SER. NOTE		C SAS-F511-001-X-C	
REMOVE SHARP EDGES		REV.	
		A1	
DIMENSIONS		SCALE	
U.S.		NONE	
INCHES-		SHEET 1 OF 2	
(METRIC)			

Customer Drawing

This document is the property of Amphenol Corporation and is delivered on the express condition that it is not to be distributed, reproduced or used, in whole or in part, for manufacture or sale by anyone other than Amphenol Corporation without the prior consent. It shall be held in confidence and all information contained herein is to be held in confidence.

REVISIONS				
SYM	ECH	DESCRIPTION	DATE	APPROVED
A1	HKXXXX	Initially release	10/20/04	IP



Customer Drawing

ITEM	PART NO.	REQ'D	DESCRIPTION
UNLESS OTHERWISE SPECIFIED			
TOLERANCES		APPROVAL DATE	
U.S.		DRAWN	BAN.XIAO 10/20/04
METRIC		CHECKED	IP 10/20/04
.X	+/-	CHECKED	
.XX	+/-	DRAWING FILE: C:\SAS\F511-001-X	
.XXX	+/-	PC NUMBER DRAWING HAS CHG-F511-001-X	
FRACTIONS	+/-	TITLE	
ANGLES	+/-	SAS SOCKET HYBRID	
FOR MATERIALS AND FINISHES			
SER. NOTE			
REMOVE SHARP EDGES			
DIMENSIONS			
U.S.		ANGLE OF PROJECTION	
INCHES-		FIRST ANGLE	
(METRIC)		(MM)	
U.S.		SIZE	DRAWING NO.
INCHES-		A3	C SAS-F511-001-X-C
(METRIC)		SCALE	NONE
			SHEET 3 OF 3
			REV. A1