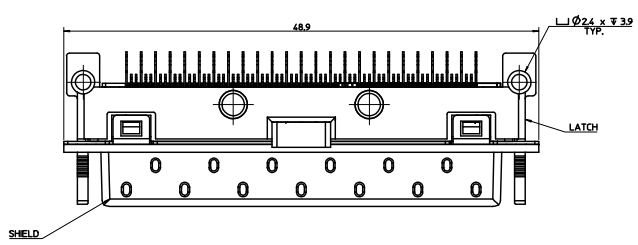
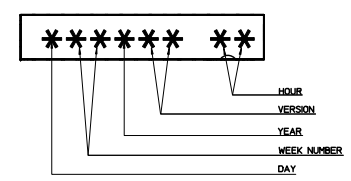
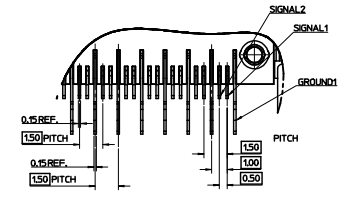


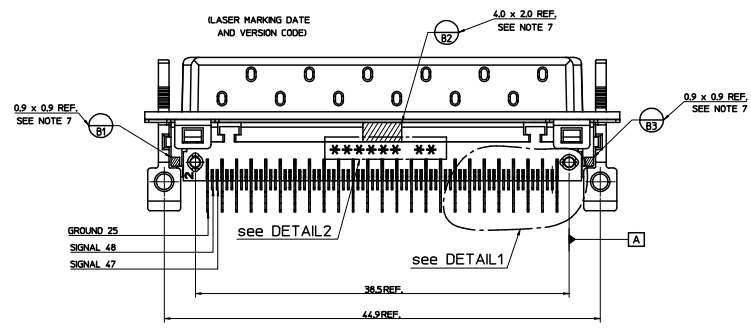
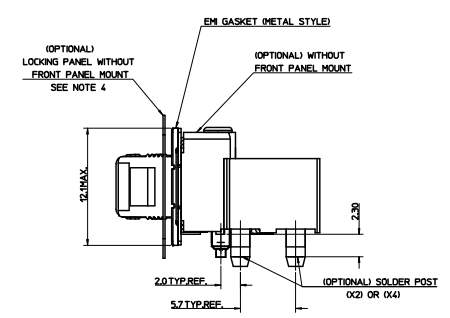
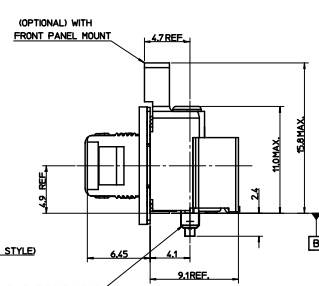
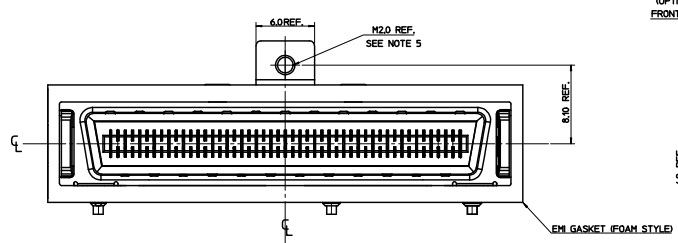
20 19 18 17 16 15 14 13 12 11 10 9 8 7 6 5 4 3 2 1



DETAIL1
Scale 8:1



DETAIL2
Scale 10:1

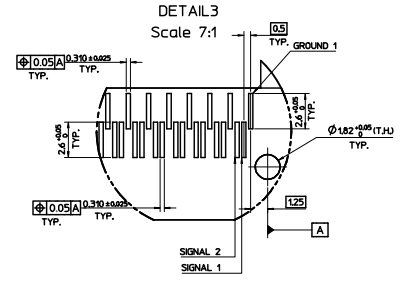
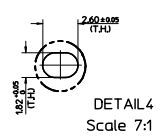
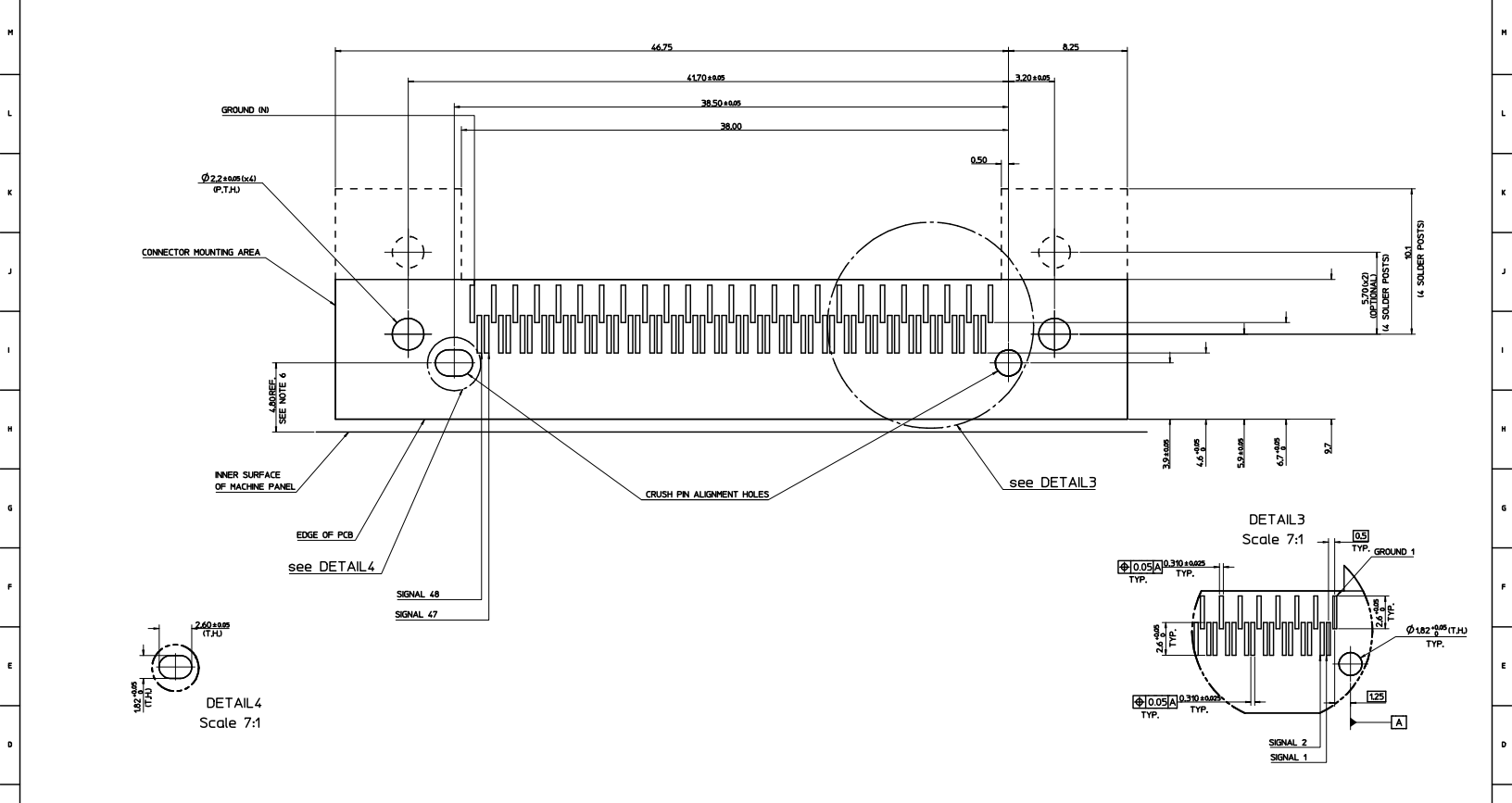


- NOTES:
1. PRODUCT SPECIFICATION PS-91525-001
 2. PACKAGING SPECIFICATION PK-91803-001
 3. SCREW THREAD M2.0 X 0.4 PITCH TAPPED THROUGH, RECOMMENDED SCREW M2 X 0.4 PITCH, LENGTH 8mm, WITH A PAN HEAD, RECOMMENDED TORQUE 0.3Nm MAX.
 4. CPAP USED TO ALIGN THE SOLDER TAILS WITH THE SOLDER PADS
 5. SCREW THREAD M2.0 X 0.4 PITCH TAPPED THROUGH, RECOMMENDED SCREW M2 X 0.4 PITCH, LENGTH 5mm, WITH A PAN HEAD, RECOMMENDED TORQUE 0.3Nm MAX.
 6. RECEPTACLE CONTACTS 127um MIN NICKEL ALL OVER CONTACT AREA 0.10 um MIN GOLD OVER 0.76um MIN PALLADIUM NICKEL SMT AREA 3um MIN TIN.
 7. PCB DATUM B = B1 + B2 + B3
 8. PCB RETENTION OPTIONS:
2 OR 4 SCREWS, (4 FOR REAR MOUNT OPTION).
 9. LOCKING PANEL (91532) ONE PER CONNECTOR ORDER SEPARATELY. SEE SALES DRAWING SD-91532-001
 9. FOR 4X PARTS PLEASE REFER TO SD-91804-001 (FOAM GASKET) AND SD-91804-003 (METAL GASKET)

MOD TO SUB HOUSING EC NO. 2008-04-28 DERMANKALERNAN 2008/04/28 CHKCD: 2008/05/06 APPR: BRUNIGUIRE 2008/05/06	QUALITY SYMBOLS	GENERAL TOLERANCES (UNLESS SPECIFIED)	DIMENSION STYLE	SCALE	DESIGN UNITS	THIRD ANGLE PROJECTION
	▽=0	mm INCH	MM ONLY	5:1	METRIC	☉
	▽=0	4 PLACES ± --- ± ---	DRAWN BY	DATE	TITLE	
		3 PLACES ± --- ± ---	DWALSH	11/11/04	12X LATCH SALES DRAWING	
	2 PLACES ± 0.10 ± ---	CHECKED BY	DATE			
	1 PLACE ± 0.2 ± ---	KDELANCY	18/11/04			
	ANGULAR ± 2 °	APPROVED BY	DATE			
		JWALLACE	25/11/04			
	DRAFT WHERE APPLICABLE MUST REMAIN WITHIN DIMENSIONS	MATERIAL NO.	DOCUMENT NO.	MOLEX INCORPORATED		
		SEE SHEET 4&5 SD-91525-004		THIS DRAWING CONTAINS INFORMATION THAT IS PROPRIETARY TO MOLEX INCORPORATED AND SHOULD NOT BE USED WITHOUT WRITTEN PERMISSION		
		SIZE A1		SHEET NO. 1 OF 5		

19 18 17 16 15 14 13 12 11 10 9 8 7 6 5 4 3 2 1

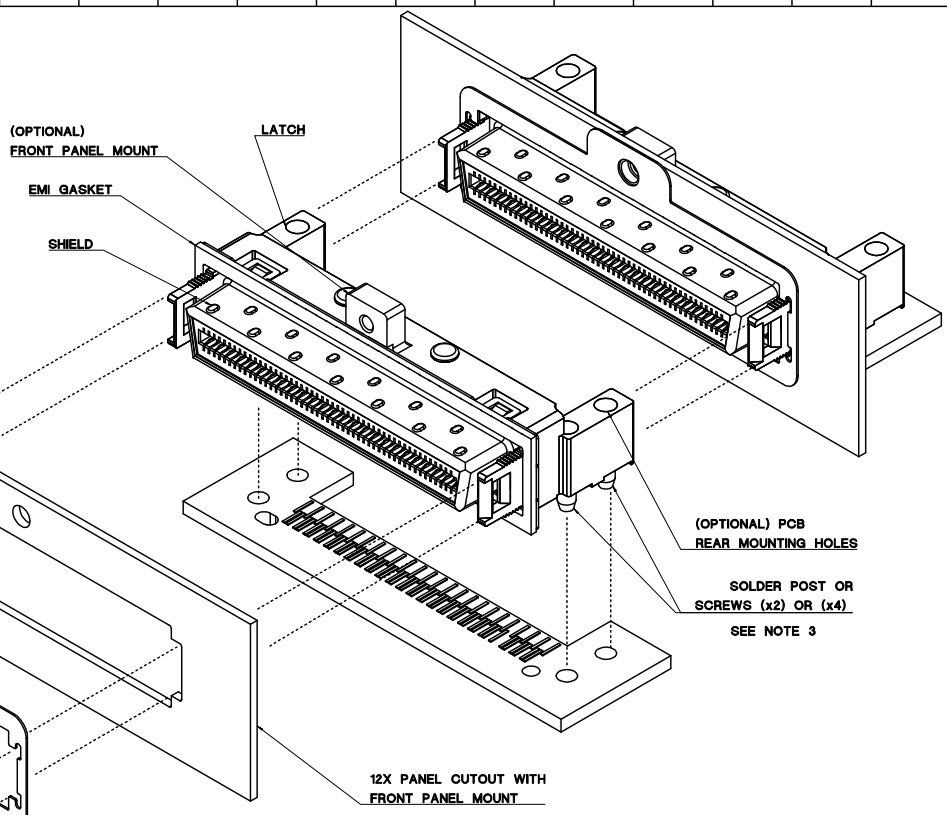
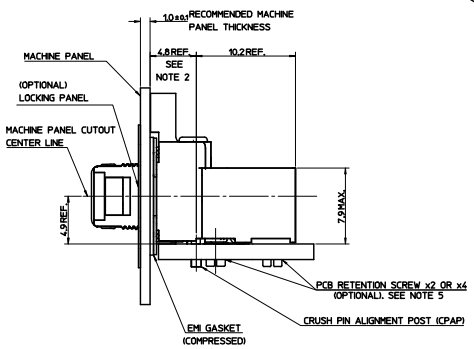
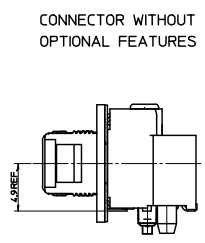
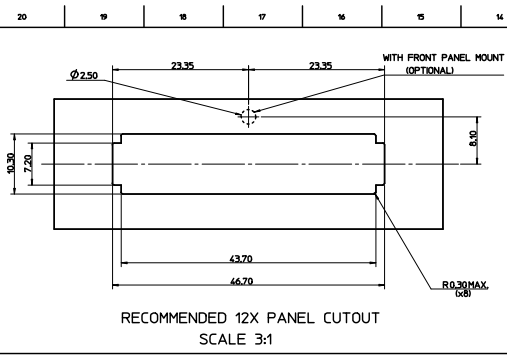
20 19 18 17 16 15 14 13 12 11 10 9 8 7 6 5 4 3 2 1



- NOTES:
1. REFER TO SHEET 1 FOR ANY UNSPECIFIED NOTES OR DIMENSIONS.
 2. AREAS OUTLINED TO BE FREE OF COMPONENTS
 3. ALL HOLE SIZES ARE FINISHED HOLE SIZES.
 4. FOR ANY UNSPECIFIED DIMENSIONS OR NOTES SEE SHEET 1
 5. RANGE OF PCB THICKNESSES: 1.6 TO 2.10mm INCLUSIVE.
 6. LONGER SOLDER POSTS AVAILABLE FOR OTHER PCB THICKNESSES. FOR FURTHER INFORMATION PLEASE CONTACT LOCAL SALES OFFICE.
 7. THE DESIGN CAN ACCOMMODATE DIFFERENT VALUES OF THIS DIMENSION BY VARYING THE EM GASKET THICKNESS. FOR FURTHER INFORMATION PLEASE CONTACT YOUR LOCAL SALES OFFICE

SEE SHEET 1 EIC NO. E2004-0458 D ORMANI/ALERNA 2000/04/28 CHKCD: 2000/05/00 APPR: BRUNO/LIRE 2000/05/06	QUALITY SYMBOLS 0 0	GENERAL TOLERANCES (UNLESS SPECIFIED) DIM INCH 4 PLACES ± --- ± --- 3 PLACES ± --- ± --- 2 PLACES ± 0.10 ± --- 1 PLACE ± 0.2 ± --- ANGULAR ± 2 °	DIMENSION STYLE MM ONLY	SCALE 8:1	DESIGN UNITS METRIC	THIRD ANGLE PROJECTION
		DRAFT WHERE APPLICABLE MUST REMAIN WITHIN DIMENSIONS	DRAWN BY DWALSH 11/11/04 CHECKED BY KOELANBY 18/11/04 APPROVED BY J WALLACE 25/11/04	DATE 11/11/04 18/11/04 25/11/04	TITLE 12X LATCH SALES DRAWING	MATERIAL NO. SEE SHEET 4&5 SD-91525-004

20 19 18 17 16 15 14 13 12 11 10 9 8 7 6 5 4 3 2 1



(OPTIONAL) PCB REAR MOUNTING HOLES

SOLDER POST OR SCREWS (x2) OR (x4)

SEE NOTE 3

LOCKING PANEL WITH FRONT PANEL MOUNT (OPTIONAL)

- NOTES:
1. REFER TO SHEET 1 FOR ALL UNSPECIFIED NOTES AND DIMENSIONS.
 2. FINAL ASSEMBLY DIMENSIONS
 3. PCB RETENTION OPTIONS:
2 OR 4 SCREWS, (4 FOR REAR MOUNT OPTIONS)
2 OR 4 SOLDER POSTS, (4 FOR REAR MOUNT OPTIONS)
 4. LOCKING PANEL (91532) ONE PER CONNECTOR ORDER SEPARATE SEE SALES DRAWING SD-9152-001
 5. RECOMMENDED SCREW #2 X 0.125" LENGTH 8MM WITH A PAN HEAD.
RECOMMENDED TORQUE 0.3 Nm MAX.

SEE SHEET 1 EIC NO. E2004-0458 D ORNIA ALERNA 2008/04/28 CHKCD: 2008/05/07 APPR: BRAGUIRE 2008/05/06	QUALITY SYMBOLS	GENERAL TOLERANCES (UNLESS SPECIFIED)	DIMENSION STYLE	SCALE	DESIGN UNITS	THIRD ANGLE PROJECTION
	$\nabla -0$ $\nabla -0$	mm INCH 4 PLACES ± 0.10 ± 0.004 3 PLACES ± 0.10 ± 0.004 2 PLACES ± 0.10 ± 0.004 1 PLACE ± 0.2 ± 0.004 ANGULAR ± 2°	MM ONLY	5:1	METRIC	<input checked="" type="checkbox"/> THIRD ANGLE <input type="checkbox"/> PROJECTION
	DRAWN BY DWALSH 11/11/04 CHECKED BY KDELANEY 18/11/04 APPROVED BY JWALLACE 25/11/04	TITLE	DOCUMENT NO.	MOLEX INCORPORATED SEE SHEET 4&5 SD-91525-004		
	DRAFT WHERE APPLICABLE MUST REMAIN WITHIN DIMENSIONS	THIS DRAWING CONTAINS INFORMATION THAT IS PROPRIETARY TO MOLEX INCORPORATED AND SHOULD NOT BE USED WITHOUT WRITTEN PERMISSION	SHEET NO.	3 OF 5		

12 LATCH I/O	
REAR MOUNTS	NO
PANEL MOUNTS	NO
SOLDER POSTS	NO

PART NO.	PACKAGING
91525-1210	TRAY
91525-8210	TAPE AND REEL

12 LATCH I/O	
REAR MOUNTS	YES
PANEL MOUNTS	NO
SOLDER POSTS	NO

PART NO.	PACKAGING
91525-1212	TRAY
91525-8212	TAPE AND REEL

12 LATCH I/O	
REAR MOUNTS	YES
PANEL MOUNTS	YES
SOLDER POSTS	NO

PART NO.	PACKAGING
91525-1214	TRAY
91525-8214	TAPE AND REEL

12 LATCH I/O	
REAR MOUNTS	YES
PANEL MOUNTS	YES
SOLDER POSTS	NO

PART NO.	PACKAGING
91525-1216	TRAY
91525-8216	TAPE AND REEL

12 LATCH I/O	
REAR MOUNTS	NO
PANEL MOUNTS	NO
SOLDER POSTS	2

PART NO.	PACKAGING
91525-1250	TRAY
91525-8250	TAPE AND REEL

12 LATCH I/O	
REAR MOUNTS	YES
PANEL MOUNTS	NO
SOLDER POSTS	4

PART NO.	PACKAGING
91525-1252	TRAY
91525-8252	TAPE AND REEL

12 LATCH I/O	
REAR MOUNTS	YES
PANEL MOUNTS	YES
SOLDER POSTS	4

PART NO.	PACKAGING
91525-1254	TRAY
91525-8254	TAPE AND REEL

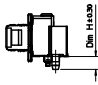
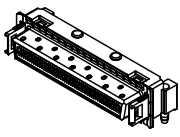
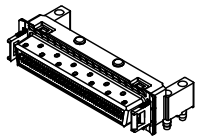
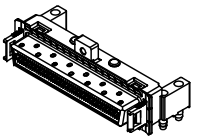
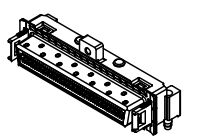
12 LATCH I/O	
REAR MOUNTS	NO
PANEL MOUNTS	YES
SOLDER POSTS	2

PART NO.	PACKAGING
91525-1256	TRAY
91525-8256	TAPE AND REEL

NOTES:
 1. REFER TO SHEET 1 FOR ALL UNSPECIFIED NOTES AND DIMENSIONS.
 2. REFER TO SHEET 2 FOR PCB LAYOUT
 3. REFER TO SHEET 3 FOR OPTIONAL ASSEMBLY COMPONENTS AND DIMENSIONS.
 4. FOR 4X PARTS WITH FOAM GASKET PLEASE REFER TO 50-91804-001

QUALITY SYMBOLS	GENERAL TOLERANCES (UNLESS SPECIFIED)	DIMENSION STYLE	SCALE	DESIGN UNITS	THIRD ANGLE PROJECTION
▽-0	4 PLACES ± --- ± ---	MM ONLY	2.5:1	METRIC	☉
▽-0	3 PLACES ± --- ± ---				
	2 PLACES ± 0.10 ± ---				
	1 PLACE ± 0.2 ± ---				
	ANGULAR ± 2 °				
	DRAFT WHERE APPLICABLE MUST REMAIN WITHIN DIMENSIONS				
SEE SHEET 1		DRAWN BY	DATE	TITLE	
D		DWALSH	11/11/04	12X LATCH SALES DRAWING	
		CHECKED BY	DATE		
		KDELANEY	18/11/04		
		APPROVED BY	DATE		
		JWALLACE	25/11/04		
		MATERIAL NO.	DOCUMENT NO.	MOLEX INCORPORATED	
		SEE SHEET 4&5 SD-91525-004		SHEET NO. 4 OF 5	
		THIS DRAWING CONTAINS INFORMATION THAT IS PROPRIETARY TO MOLEX INCORPORATED AND SHOULD NOT BE USED WITHOUT WRITTEN PERMISSION			

METAL GASKET AND SOLDER POST LENGTH OPTIONS

 NO SOLDER POSTS	PACKAGING				
		TRAY TAPE & REEL	91525-1211 91525-8211	91525-1213 91525-8213	91525-1215 91525-8215
Dim H = 2.3	TRAY	91525-1251	91525-1253	91525-1255	91525-1257
	TAPE & REEL	91525-8251	91525-8253	91525-8255	91525-8257
Dim H = 3.3	TRAY	91525-1261	91525-1263	91525-1265	91525-1267
	TAPE & REEL	91525-8261	91525-8263	91525-8265	91525-8267
Dim H = 4.3	TRAY	91525-1291	91525-1293	91525-1295	91525-1297
	TAPE & REEL	91525-8291	91525-8293	91525-8295	91525-8297

- NOTES:
1. REFER TO SHEET 1 FOR ALL UNSPECIFIED NOTES AND DIMENSIONS.
 2. REFER TO SHEET 2 FOR PCB LAYOUT
 3. REFER TO SHEET 3 FOR OPTIONAL ASSEMBLY COMPONENTS AND DIMENSIONS.
 4. FOR 4X PARTS WITH METAL GASKET PLEASE REFER TO SD-91804-003

SEE SHEET 1 EIC NO: 42708-0-558 D: 2008/04/28 DESIGNED BY: ALEXANDRA CHKD: 2008/04/07 APPR: BRUNO LIRE 2008/05/06	QUALITY SYMBOLS	GENERAL TOLERANCES (UNLESS SPECIFIED)	DIMENSION STYLE	SCALE	DESIGN UNITS	THIRD ANGLE PROJECTION	
	0 0	mm INCH 4 PLACES ± --- ± --- 3 PLACES ± --- ± --- 2 PLACES ± 0.10 ± --- 1 PLACE ± 0.2 ± --- ANGULAR ± 2 °	MM ONLY	2:1	METRIC	DRAWN BY: DWALSH 11/11/04 CHECKED BY: KDELANEY 18/11/04 APPROVED BY: J WALLACE 25/11/04	TITLE: 12X LATCH SALES DRAWING MOLEX INCORPORATED
	DRAFT WHERE APPLICABLE MUST REMAIN WITHIN DIMENSIONS	MATERIAL NO. SEE SHEET 4&5 SD-91525-004	DOCUMENT NO. SEE SHEET 4&5 SD-91525-004	SHEET NO. 5 OF 5			
	THIS DRAWING CONTAINS INFORMATION THAT IS PROPRIETARY TO MOLEX INCORPORATED AND SHOULD NOT BE USED WITHOUT WRITTEN PERMISSION						