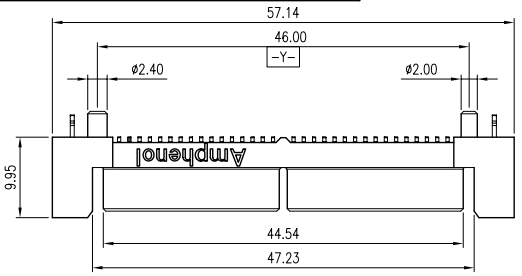


This document is the property of Amphenol Corporation and is delivered on the express condition that it is not to be disclosed, reproduced or used, in whole or in part, for manufacture or sale by anyone other than Amphenol Corporation without its prior consent, and that no right is granted to disclose or to use any information in this document.

** THIS PRODUCT DIDN'T HAVE ENVIRONMENT- RELATED SUBSTANCES PER MATERIALS SPECIFICATION #MS-S001, LEVEL 1. WHEN THE TIME SET SCHEDULE OF LEVEL 2 IS EXPIRY, THE SUBSTANCES SHALL NOT BE CONTAINED WITH THIS PRODUCT.

CUSTOMER DRAWING

REVISIONS				
SYM	ECN No.	DESCRIPTION	DATE	APPROVED
A		RELEASE TO PRODUCTION	08/19/2005	Henry Ko
B	NE-05348	REVISE LOGO	10/25/2005	Henry Ko



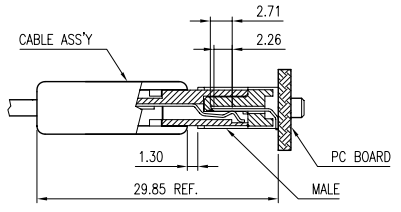
P/N SYSTEM:
G38A 2 X X 1 4 X EU

CONTACT FINISH:
0: GOLD FLASH
1: 15u" GOLD
2: 30u" GOLD

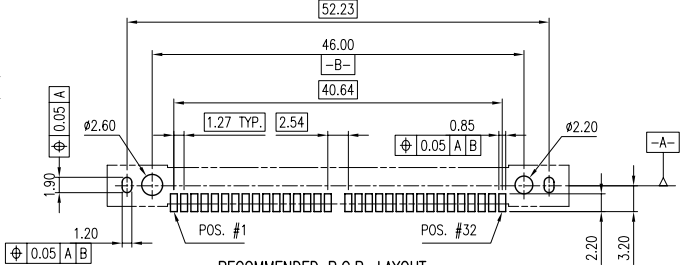
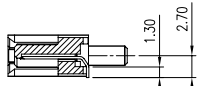
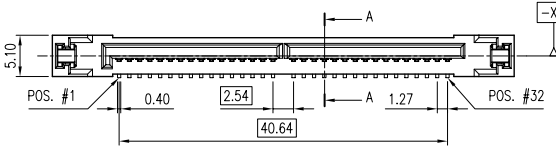
TERMINAL STYLE:
1: SMT (FOR 1.57 mm PCB)
6: SMT (FOR 3.18 mm PCB)

PACKAGING CODE:
A: TRAY PACKAGING
*B: TUBE PACKAGING (NOT AVAILABLE)

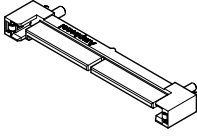
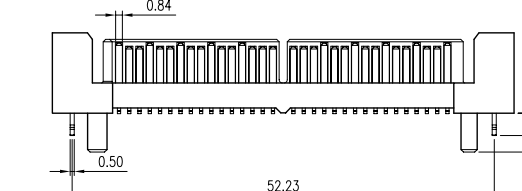
MATERIAL OF INSULATION:
4: NYLON 9T+45%GF, BLACK



MATING CONDITION



RECOMMENDED P.C.B. LAYOUT
(ALL TOLERANCE ARE ±0.05 mm)



PART NUMBER	DIM. L	DIM. M	PCB THICKNESS
G38A 2X 6 14X EU	4.35	4.80	3.18±0.1
G38A 2X 1 14X EU	2.75	3.20	1.57±0.1

- NOTES:
- HOUSING: PA-9T+ 45 %G/F, UL 94V-0, COLOR- BLACK
 - CONTACT: PHOSPHOR BRONZE, 0.3mm THICKNESS, SELECTIVE GOLD OVER NICKEL PLATED ON CONTACT AREA, TIN OVER NICKEL PLATED ON TERMINAL AREA
 - BOARDLOCK: PHOSPHOR BRONZE, 0.5mm THICKNESS, TIN OVER NICKEL PLATED
 - THIS PRODUCT MEETS THE REFLOW TEMPERATURE AND MOISTURE LEVEL 2 REQUIREMENT PER SPECIFICATION IPC/JEDEC J-STD-020C

TOLERANCE	m/m	APPROVALS	DATE	TITLE
x.	±0.30	DRAWN		SAS BACKPLANE CONNECTOR
x.x	±0.25	DESIGNED		32- POS., 4- PORT
x.xx	±0.15	CHECKED		MALE, VERTICAL, SMT
x.xxx	±0.05	APPROVED		
ANGULAR	±2°			

UNLESS OTHERWISE SPECIFIED		UNIT	MM	SIZE	A4	PART NO.	G38A 2XX14X EU	DRAWING NO.	T367-G38A2X114XEU-34	REV.	B
----------------------------	--	------	----	------	----	----------	----------------	-------------	----------------------	------	---

Amphenol®
Amphenol Corporation
Amphenol Taiwan Corporation

SCALE N.A. SHEET 1 OF 1