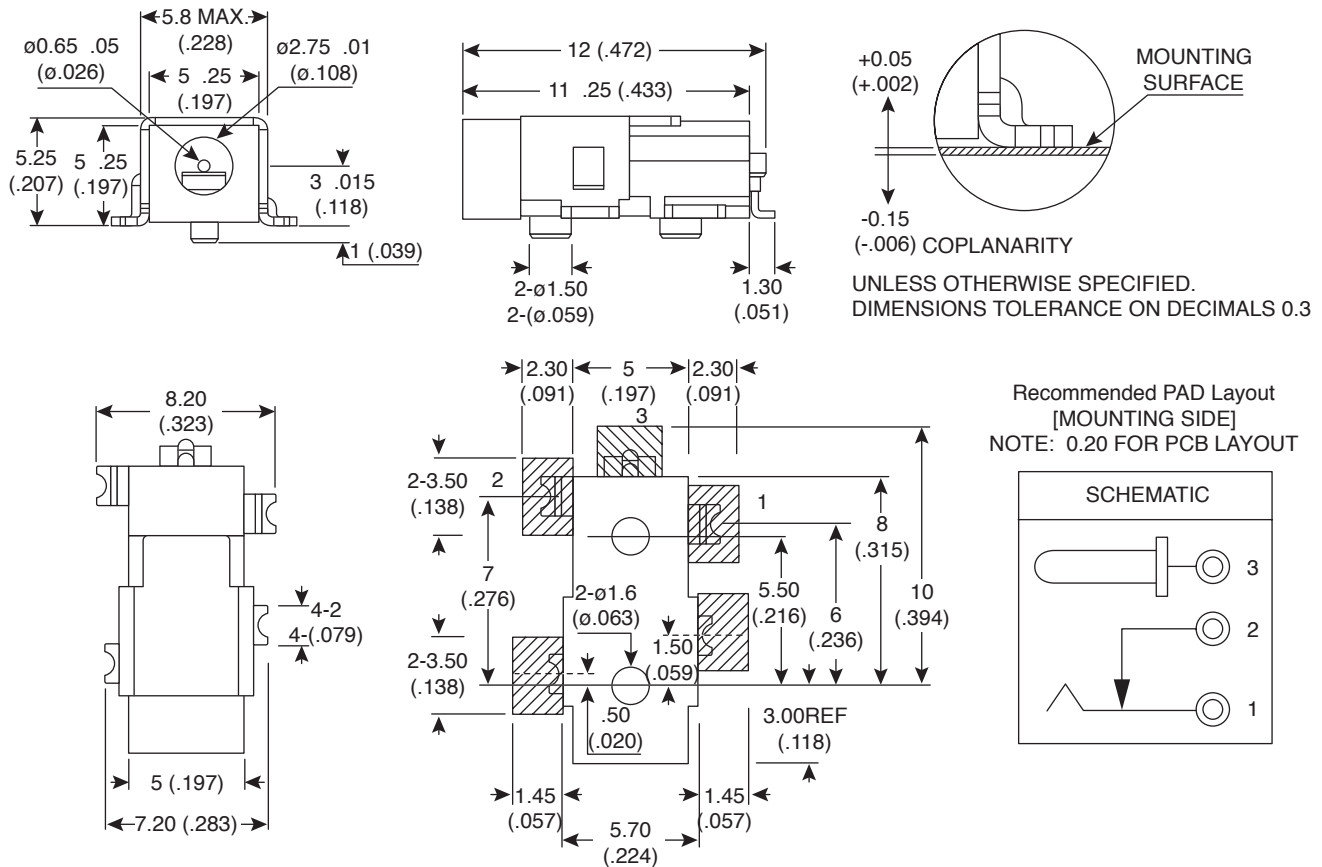


# DC Power Jack

163-2307

KOBI CONN

DC Power Jack



DIMENSIONS: mm (In.)

## SPECIFICATIONS

Plastic housing:	LCP, black
Operating temperature:	-25°C to +85°C
Insertion & extraction force:	0.2Kgs to 2.0Kgs
Contact resistance:	50mΩ max.
Insulation resistance:	100MΩ (min.)
Withstand voltage test:	250VAC 50 to 60Hz for 1 min.
Center pin:	nickel plated brass
Rated voltage:	4-20VDC
Rated current:	3.0A
Contacts:	tin plated brass
Durability test:	5000 mating cycles

Date Last Revised: 10-18-05

Available from Mouser Electronics  
1-800-346-6873  
www.mouser.com

KC-300397

163-2307