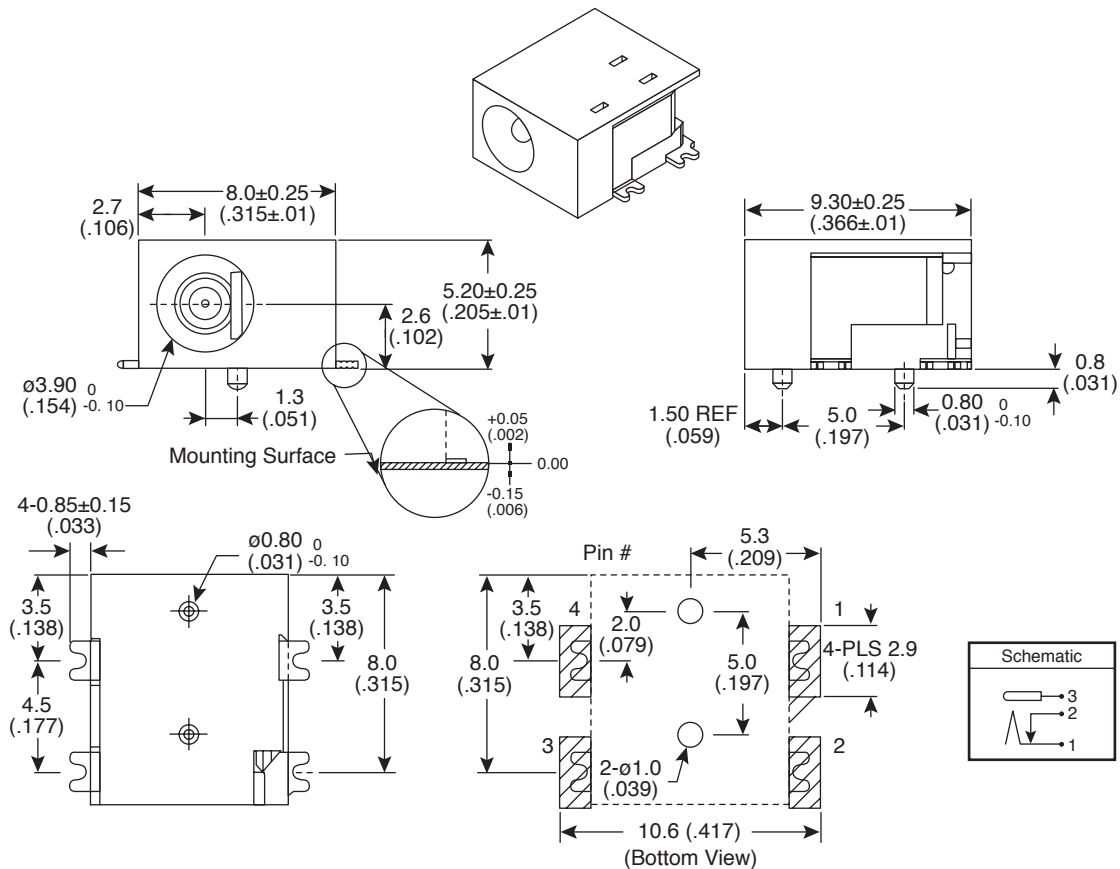


# DC Power Jack

163-2313

KOBI CONN

DC Power Jack



DIMENSIONS: mm (In.)

## SPECIFICATIONS

<b>Insertion and extraction force:</b>	0.2Kgs to 2.0Kgs
<b>Withstand voltage:</b>	250VAC for 1 min.
<b>Insulation resistance:</b>	100M $\Omega$ minimum at 250VDC
<b>Contact resistance:</b>	50m $\Omega$ max.
<b>Durability test:</b>	5000 mating cycles
<b>Operating temperature:</b>	-25°C to +85 °C
<b>Rated voltage:</b>	24VDC
<b>Rated current:</b>	3.0ADC
<b>Plastic housing:</b>	black LCP
<b>Terminal:</b>	tin plated brass
<b>Center pin:</b>	nickel plated copper

Date Last Revised: 10-18-05

Available from Mouser Electronics  
1-800-346-6873  
www.mouser.com

KC-300398

163-2313