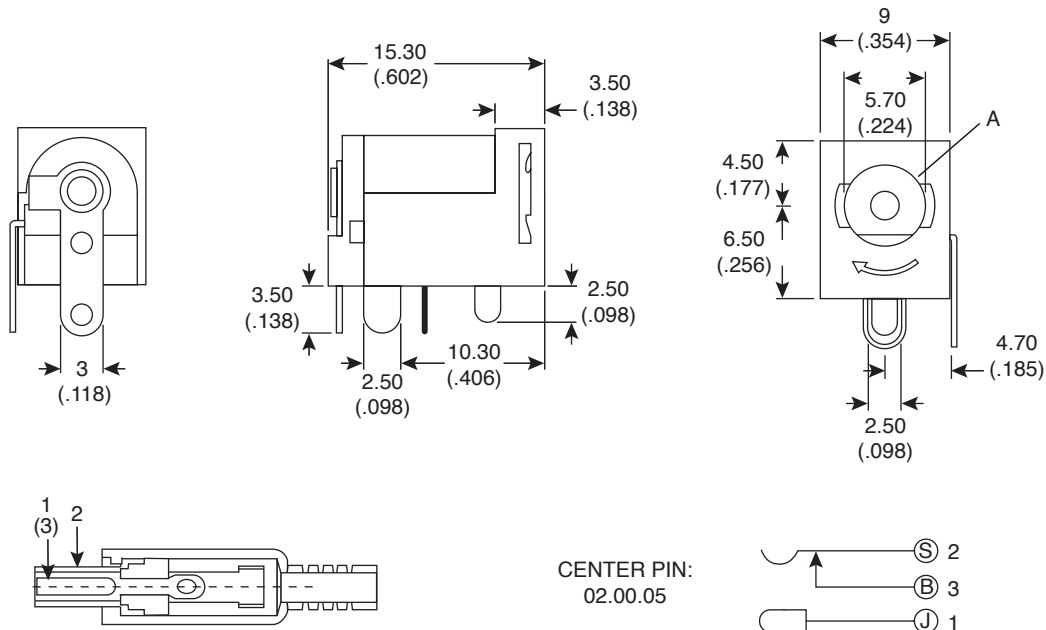


Lockable DC Jack

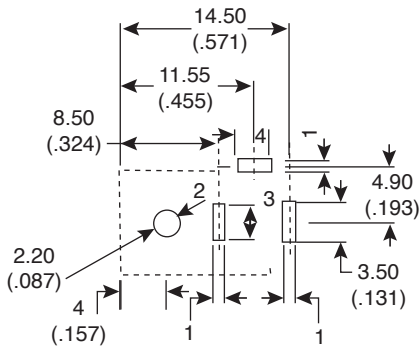
161-0721



Lockable DC Jack



Dimensions: mm (IN.)



HOLE LAYOUT
BOTTOM VIEW

SPECIFICATIONS

Rating:	DC 18V 1.5A
Contact resistance:	30mΩ max
Insulation resistance:	DC500V/100mΩ min
Withstand voltage:	AC500V 1 minute-Use with standard DC power plugs and the locking detent DC power plugs, 171-0721, 171-0722
Body:	Polycarbonate
Insulator:	Polycarbonate
Terminal A:	Tin plated brass
Terminal B:	Tin plated brass
Contact spring:	Tin plated copper
Pin:	Nickel plated brass
Tolerance:	±0.3
Insertion Force:	5 to 20N
Extraction Force:	4 to 15N
Life Cycles:	5,000 cycles min.
Operating Temp.:	-20°C to 70°C

Date Last Revised: 6-23-05

Available from Mouser Electronics
1-800-346-6873
www.mouser.com

KC- 300290

161-0721