

Material and Finish

Body: Nylon 66, UL 94V-0 Rated
 Black Color
 Center Pin: Brass, Tin Plated
 Pins 1 and 3: Brass, Tin Plated
 Pin 2: PBS, Tin Plated
 Insulator Material Color: Black

Electrical Characteristics

Contact Resistance
 Before Durability Test
 Between Terminals: 30 milliohms Max.
 Plug to Contacts: 50 milliohms Max.

After Durability Test:
 Between Terminals: 60 milliohms Max.
 Plug to Contacts: 100 milliohms Max.

Rated Voltage: 24V DC

Rated Current: 2.5 amps

Insulation Resistance: 100 Megohms Min.
 at 500 VDC

Mechanical Characteristics

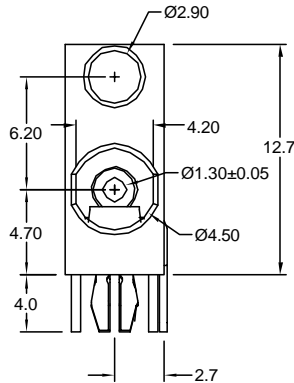
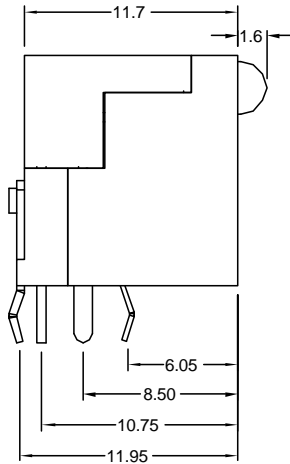
Durability Test: 5000 cycles

Insertion Force: 0.3kg-2.0kg

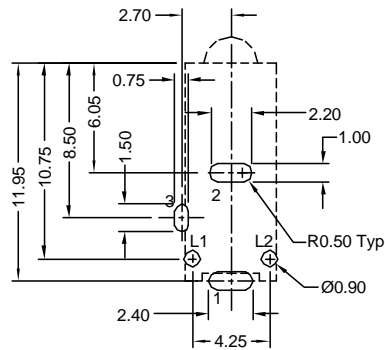
Extraction Force: 0.3kg-2.0kg

Operating Temp: -25°C to +85°C

PATENT PENDING

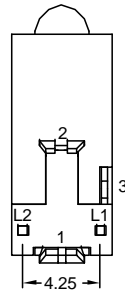
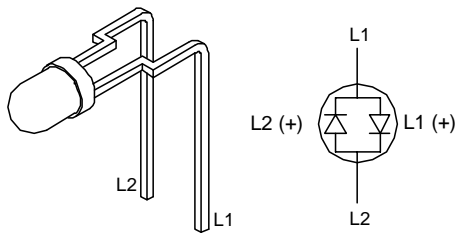
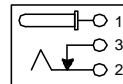


Recommended PCB Layout (top view)



Part Number	LED Color (L2/L1)
KLDL-0201BC-G/Y	Green/Yellow

Power Jack Schematic



REV.	DATE	DESCRIPTION	REV. BY	CHK. BY	DRAWN BY	DATE
A1	5/10/02	Release Drawing	K. Wallace	K. Wallace	K. Wallace	3/22/02
A2	5/16/02	Add Schematic	K. Wallace	K. Wallace	K. Wallace	
A3	5/29/02	Release Drawing	K. Wallace	K. Wallace	K. Wallace	
B1	7/31/02	Ref. ECO 02-091	K. Wallace	K. Wallace		
B2	7/24/03	Ref. ECO 03-017	C. Leiva	T. Gokcek		
B3	2/22/05	Ref. ECO 05-011	R. Aguirre	H. MA		

KLDL-0201BC-x/x

Mini DC Power Jack with LED
1.3mm Center Pin, Bi-color LED



Tolerances	
X.X ± 0.25	
X.XX ± 0.15	
Unless Stated	
Otherwise	