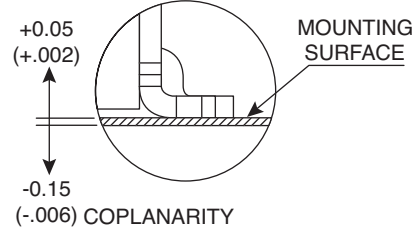
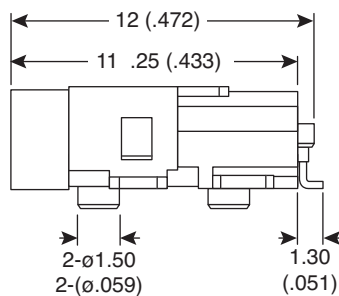
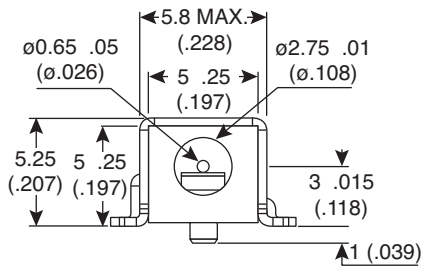


DC Power Jack

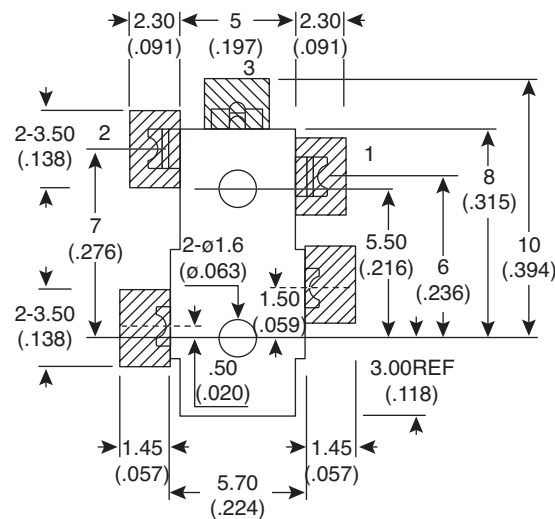
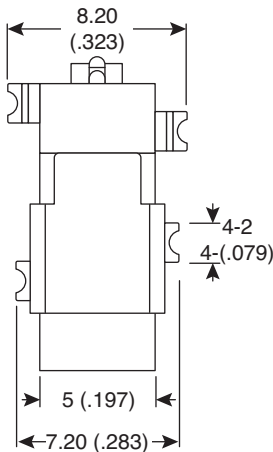
163-2307-E

KOBICONN

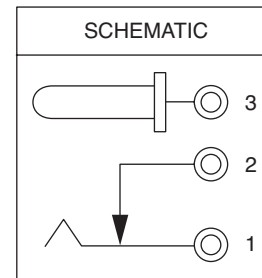
DC Power Jack



UNLESS OTHERWISE SPECIFIED.
DIMENSIONS TOLERANCE ON DECIMALS 0.3



Recommended PAD Layout
[MOUNTING SIDE]
NOTE: 0.20 FOR PCB LAYOUT



DIMENSIONS: mm (In.)

SPECIFICATIONS

Plastic Housing:	LCP, black
Operating Temperature:	-25°C to +85°C
Insertion & Extraction Force:	0.2Kgs to 2.0Kgs
Contact Resistance:	50mΩ max.
Insulation Resistance:	100MΩ (min.)
Withstand Voltage Test:	250VAC 50 to 60Hz for 1 min.
Center Pin:	nickel plated brass
Rated Voltage:	4-20VDC
Rated Current:	3.0A
Contacts:	tin plated brass
Durability Test:	5000 mating cycles
RoHS Compliant	

Date Last Revised: 6-13-06

Available from Mouser Electronics
1-800-346-6873
www.mouser.com

KC-300982

163-2307-E