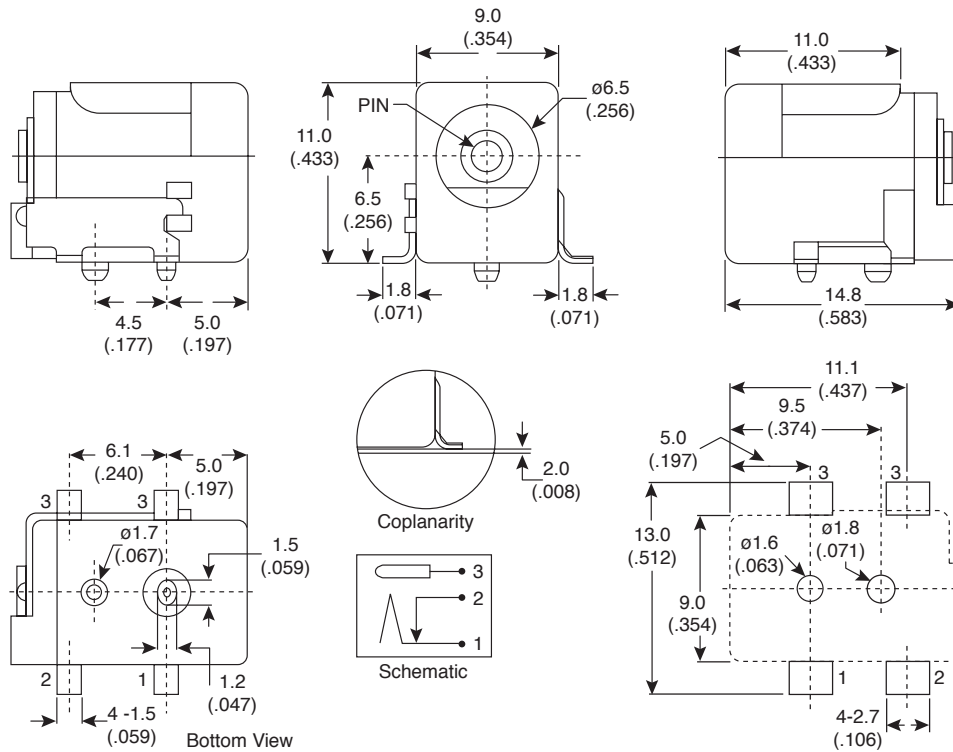


DC Power Jack

163-2121-E, 163-2125-E



DC Power Jack



Dimensions: mm and (In.)

SPECIFICATIONS	
Insertion & extraction force:	0.2Kgs to 2.0Kgs
Withstand voltage test:	500VAC 50 to 60Hz for 1 min.
Insulation resistance:	100M Ω (min.) 500VDC
Contact resistance:	50m Ω max.
Durability test:	5000 mating cycles
Operating temperature:	-25°C to +85°C
Rated voltage:	24VDC
Rated current:	3.5ADC
Plastic housing:	polyimide, black
Contacts:	brass, tin plated
Center pin:	copper alloy, nickel plated
RoHS Compliant	

Date Last Revised: 06-23-06

Available from Mouser Electronics
1-800-346-6873
www.mouser.com

KC-300983

163-2121-E, 163-2125-E