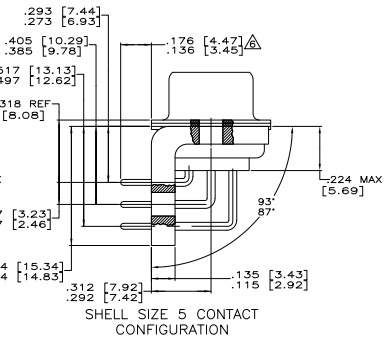
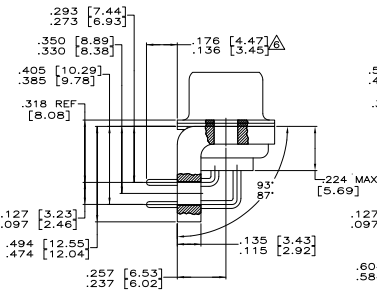
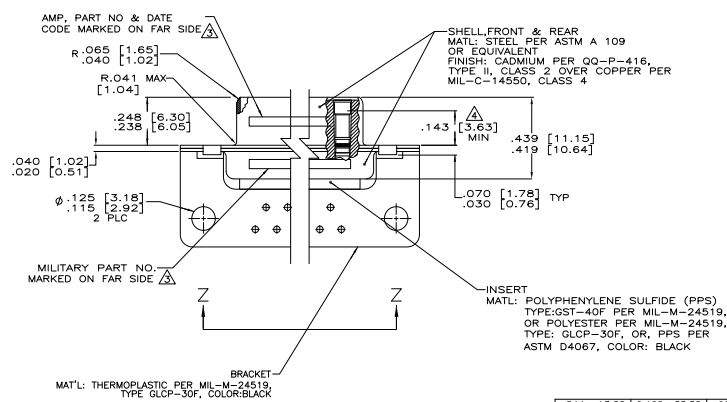
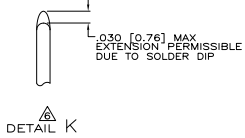


- 1. SEE SHEET 2 FOR RECOMMENDED P.C. BOARD LAYOUT. TRUE POSITION TOLERANCE FOR P.C. BOARD LAYOUT IS .010 [0.25] AT MAX MATERIAL CONDITION. SUGGESTED BOARD THICKNESS IS .125 [3.18]
- 2. THE CONNECTORS DESCRIBED IN THIS DOCUMENT MEET THE REQUIREMENTS OF MIL-C-24308 AND MATE WITH ANY PLUG CONNECTOR WITH SAME INSERT ARRANGEMENT.
- 3. MARKED WITH .047 [1.19]-.062 [1.57] HIGH CHARACTERS. FAR SIDE REFERS TO THE WIDE SIDE OF THE KEYSTONE. NEAR SIDE REFERS TO THE NARROW SIDE OF THE KEYSTONE. IF THE REAR SHELL IS TOO SMALL FOR THE ENTIRE MILITARY PART NUMBER, MARKING SHALL BE LOCATED AS FOLLOWS:
 - A. "M24308" ON FRONT SHELL, FAR SIDE.
 - B. SLASH SHEET AND DASH NUMBER ON REAR SHELL, FAR SIDE.
 - C. "AMP" AND DATE CODE ON FRONT SHELL, NEAR SIDE.
 - D. PART NUMBER ON REAR SHELL, NEAR SIDE.
- 4. IF THE FRONT SHELL IS TOO SMALL FOR "AMP", PART NUMBER AND DATE CODE, MARKING SHALL BE SPLIT AS FOLLOWS:
 - A. PART NUMBER ON REAR SHELL, NEAR SIDE.
 - B. "AMP" AND DATE CODE ON FRONT SHELL, NEAR SIDE.
 - C. MILITARY PART NUMBER ON REAR SHELL, FAR SIDE.
- 5. POINT OF ELECTRICAL ENGAGEMENT - AS MEASURED WITH A .0390 [0.991]-.0393 [0.998] DIA SQUARE ENDED TEST PIN.
- 6. THIS DRAWING SHALL BE INTERPRETED IN ACCORDANCE WITH APPLICABLE STANDARDS LISTED IN MIL-STD-100.
- 7. SOLDER DIP PER MIL-STD-2000 COMPOSITION Sn63 CONFORMING TO QQ-S-571 IN THE ENTIRE AREA OF DIMENSION SHOWN. 1218408-6 THRU -10 ONLY.



DIM J	DIM H	DIM E	DIM D	DIM C	DIM B	DIM A	INSERT ARRANGEMENT	NO OF POS	SHELL SIZE	MILITARY P/N ON CONNECTOR	P/N MARKED ON CONNECTOR	PART NO.
.544 [13.82]	2.188 [55.58]	.620 [15.75]	.428 [10.87]	2.411 [61.24]	2.069 [52.55]	2.650 [67.31]	MS18277-1	50	5	M24308/23-35F	1218408-5	1-1218408-0
.524 [13.31]	2.168 [55.07]	.590 [14.99]	.418 [10.69]	2.401 [60.99]	2.059 [52.30]	2.620 [66.55]	MS18276-1	37	4	M24308/23-34F	1218408-4	1218408-9
.432 [10.97]	2.282 [57.96]	.508 [12.93]	.316 [8.03]	2.505 [63.63]	2.164 [54.97]	2.744 [69.70]	MS18275-1	25	3	M24308/23-33F	1218408-3	1218408-8
.412 [10.46]	1.815 [46.02]	.479 [12.17]	.306 [7.77]	1.847 [46.91]	1.506 [38.25]	2.073 [52.65]	MS18274-1	15	2	M24308/23-32F	1218408-2	1218408-7
.432 [10.97]	1.083 [27.76]	.508 [12.93]	.316 [8.03]	1.317 [33.45]	.976 [24.79]	1.556 [39.52]	MS18273-1	9	1	M24308/23-31F	1218408-1	1218408-6
.412 [10.46]	.749 [19.02]	.479 [12.17]	.306 [7.77]	.979 [24.87]	.638 [16.21]	1.198 [30.43]	MS18277-1	50	5	M24308/23-35F	1218408-5	1218408-5
.544 [13.82]	2.188 [55.58]	.620 [15.75]	.428 [10.87]	2.411 [61.24]	2.069 [52.55]	2.650 [67.31]	MS18277-1	50	5	M24308/23-35F	1218408-5	1218408-5
.524 [13.31]	2.168 [55.07]	.590 [14.99]	.418 [10.69]	2.401 [60.99]	2.059 [52.30]	2.620 [66.55]	MS18276-1	37	4	M24308/23-34F	1218408-4	1218408-4
.432 [10.97]	2.282 [57.96]	.508 [12.93]	.316 [8.03]	2.505 [63.63]	2.164 [54.97]	2.744 [69.70]	MS18275-1	25	3	M24308/23-33F	1218408-3	1218408-3
.412 [10.46]	1.815 [46.02]	.479 [12.17]	.306 [7.77]	1.847 [46.91]	1.506 [38.25]	2.073 [52.65]	MS18274-1	15	2	M24308/23-32F	1218408-2	1218408-2
.432 [10.97]	1.083 [27.76]	.508 [12.93]	.316 [8.03]	1.317 [33.45]	.976 [24.79]	1.556 [39.52]	MS18273-1	9	1	M24308/23-31F	1218408-1	1218408-1
.412 [10.46]	.749 [19.02]	.479 [12.17]	.306 [7.77]	.979 [24.87]	.638 [16.21]	1.198 [30.43]						



THIS DRAWING IS A CONTROLLED DOCUMENT.

DESIGNED BY	DATE	REVISED BY	DATE
DRAWN BY	DATE	REVISED BY	DATE
CHECKED BY	DATE	REVISED BY	DATE
APPROVED BY	DATE	REVISED BY	DATE

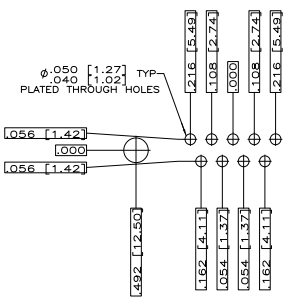
RECEPTACLE ASSY, AMP/LITE RIGHT ANGLE, SERIES 109 SIZE 1 THRU 5

SIZE 1 THRU 5

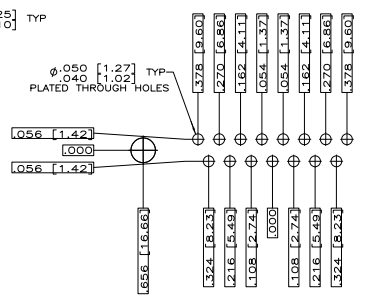
100779G=1218408

CUSTOMER DRAWING

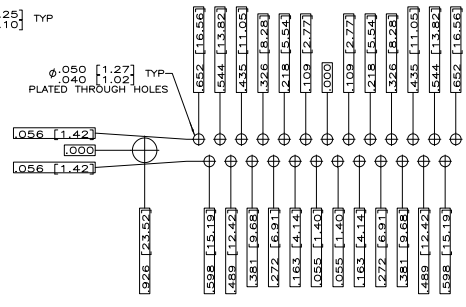
REV	DATE	DESCRIPTION	BY	APP
DF	DO			
		SEE SHEET 1		



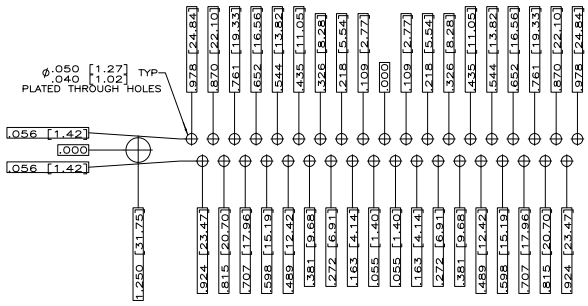
RECOMMENDED P.C. BOARD LAYOUT
 SHELL SIZE 1 (9 POSITION)



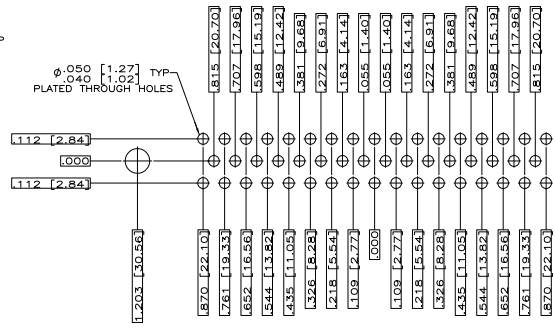
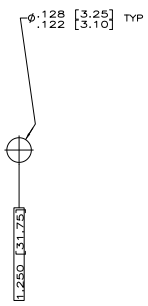
RECOMMENDED P.C. BOARD LAYOUT
 SHELL SIZE 2 (15 POSITION)



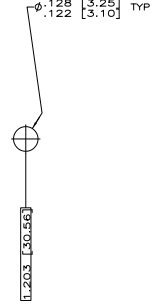
RECOMMENDED P.C. BOARD LAYOUT
 SHELL SIZE 3 (25 POSITION)



RECOMMENDED P.C. BOARD LAYOUT
 SHELL SIZE 4 (37 POSITION)



RECOMMENDED P.C. BOARD LAYOUT
 SHELL SIZE 5 (50 POSITION) Δ



THIS DRAWING IS A CONTROLLED DOCUMENT.		REV. CONTROLLED	DATE	11-13-89
DESIGNED BY		REVISIONS	DATE	
DRAWN BY		DATE		
CHECKED BY		DATE		
APPROVED BY		DATE		
SEE CALLOUTS		SEE CALLOUTS		
CUSTOMER DRAWING		SIZE	A1	00779
		DRWG NO	1218408	
		REV	4.1	2
		DATE		