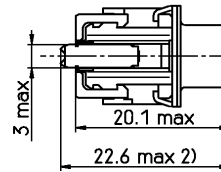
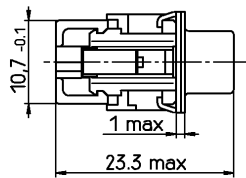
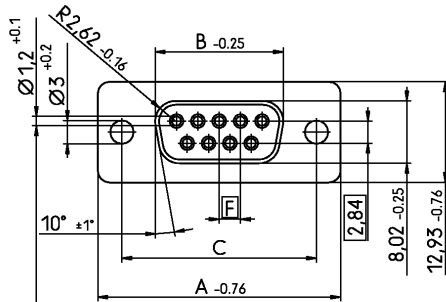


Standardausführung: V42254-A5235-B\*\*\*  
 standard version: V42254-A5237-B\*\*\*

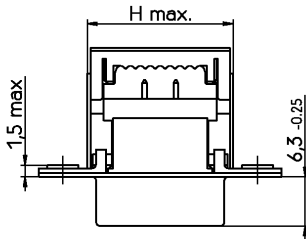
Maße mit Oberteil  
 im vorgerasteten Zustand  
 dimensions with press-on  
 cover prelatched

Maße mit Oberteil im verpreßten Zustand und montierten  
 Zugentlastungsbügel (standardmäßig nicht mitgeliefert)  
 dimensions with press-on cover pressed down and with mounted  
 strain relief clamp (not standard included)



zu verwendende Zugentlastungsbügel:  
 strain relief clamp to use:  
 9 p.: V42254-A4000-D9  
 4-1393560-3  
 15 p.: V42254-A4000-D15  
 4-1393560-5  
 25 p.: V42254-A4000-D25  
 4-1393560-6  
 37 p.: V42254-A4000-D37  
 4-1393560-7

alle Kontakte  
 all contacts  
 Ø0.08



| Gesamtleiter-<br>querschnitt mm <sup>2</sup><br>overall conductor<br>crosssectional<br>area mm <sup>2</sup> | AWG-<br>Bereich<br>AWG<br>range | Gesamtleiter-<br>durchmesser mm<br>overall conductor<br>diameter mm | Anzahl der<br>Einzellitzen<br>no. of single<br>stranded wires | Leiter // conductor | Isolierhülle<br>insulating sleeve |                      |
|---|---------------------------------|---|---|---------------------|-----------------------------------|----------------------|
|   |                                 |   |   |                     | Durchmesser<br>diameter           | Material<br>material |
| -   | 30                              | 0.25 <sup>3)</sup>  | 1   | Massiv // solid     | 1 => 1.1 max                      | PVC                  |
| -   | 28                              | 0.32 <sup>3)</sup>  | 1   | Massiv // solid     | 0.8 => 1.1 max                    | PVC                  |
| 0.09 <sup>3)</sup>  | 28                              | -   | 7   | Litze // stranded   | 0.8 => 1.1 max                    | PVC                  |
| 0.14  | 26                              | -   | 7   | Litze // stranded   | 0.8 => 1.1 max                    | PVC                  |

| Sachnr.<br>ordering code<br>V42254-A523*- | Polzahl<br>no. of contacts | dimension<br>Maß |       |                                  |      |       |
|---|----------------------------|------------------|-------|----------------------------------|------|-------|
|   |                            | A                | B     | C                                | F    | H     |
| B*09                                      | 09                         | 31.19            | 16.46 | 25.0 <sup>+0.12<br/>-0.13</sup>  | 2.74 | 18.73 |
| B*15                                      | 15                         | 39.52            | 24.79 | 33.3 <sup>+0.15<br/>-0.1</sup>   | 2.74 | 27.26 |
| B*25                                      | 25                         | 53.42            | 38.5  | 47.04 <sup>+0.13<br/>-0.13</sup> | 2.76 | 40.78 |
| B*37                                      | 37                         | 69.7             | 54.96 | 63.5 <sup>+0.13<br/>-0.13</sup>  | 2.76 | 57.44 |

Zu verwendende Leitungen // cables to be used

Flachbandkabel // ribbon cable  
 Verwendet werden können alle // all commercially available  
 handelsüblichen Kabel mit: // cables with:  
 - einer Isolierhülle aus PVC // - insulation sleeve made of PVC  
 - verzinnnten oder versilberten // - tin-coated or silver-plated  
 Kupferdrähten // copper wires

Anforderungsstufe,  
 performance level<sup>1)</sup>

3) nur mit Zugentlastungsbügel verwenden  
 2) Maße mit Zugentlastungsbügel  
 1) nach DIN 41652 T.2 und T.4

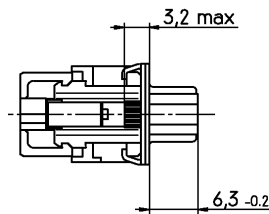
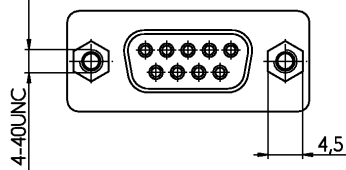
dargestellt wird die 9-polige  
 Ausführung  
 drawn is the 9-contacts  
 version

3) only to use with strain relief clamp  
 2) dimensions with strain relief clamp  
 1) according to DIN 41652 p.2 and p.4

|                                    |                                      |      |   |         |
|------------------------------------|--------------------------------------|------|---|---------|
| <b>TE</b> TE Connectivity          |                                      |      | SCALE: 2:1  | WEIGHT  |
| LOC DIMENSIONS IN MM               |                                      |      | MATERIAL  |         |
| DATE: 06.05.91                     | NAME: Stercix                        |      | PART NAME: Sub-D Schneidklemmschluß                             |         |
| DEP.: PE Com PE&SE                 | TOLERANCE UNLESS SPECIFIED OTHERWISE |      | Suchsenstecker (für Flachleitungen / in Blister)                |         |
| C3: ECO-11-005294                  | 5APR11                               | HMR  | D-Sub IDC female connector (for ribbon cables/ in blister pack) |         |
| REV. CHANGE ORDER                  | DATE                                 | APP. | PART NO. V42254-A523*-B***-*-27                                 | SHT. 1+ |
| Customer Drawing Nr. C 8-1393485-7 |                                      |      | OF 4  |         |

mit Gewindebolzen: V42254-A5236-B\*\*\*  
 with screwlock stud bolts: V42254-A5238-B\*\*\*

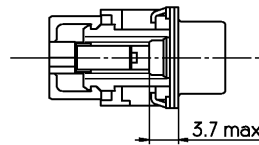
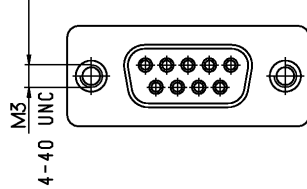
Verdrehsicherheit  $\geq 70$  Ncm  
 torque retention  $\geq 70$  Ncm



mit Stop-Mutter :  
 with self locking nuts:

M3: V42254-A5234-B\*\*\* 4-40UNC: V42254-A5232-B\*\*\*  
 V42254-A5239-B\*\*\* V42254-A5233-B\*\*\*

Verdrehsicherheit  $\geq 70$  Ncm  
 torque retention  $\geq 70$  Ncm



dargestellt wird die 9-polige Ausführung  
 drawn is the 9-contacts version

|             |              |   |  |   |
|-------------|--------------|---|--|---|
|             |              | SCALE 2:1                               |  | WEIGHT  |
|             |              |   |  | MATERIAL  |
| DATE        | 06.05.91     | PART NAME                               |  | Sub-D Schneidklemmanschluß<br>Buchsenleiter (für Flachleitungen / in Blister)<br>D-Sub IDC<br>female connector (for ribbon cables/ in blister pack) |
| NAME        | Sterctcx     | PART NO.                                |  |   |
| DEP.        | PE Com PE&SE | TOLERANCE UNLESS SPECIFIED OTHERWISE    |  | V42254-A523*-B***-*-27  |
| SEE SHEET 1 |              | REV. CHANGE ORDER                       |  | SHT. 2+   |
| DATE        |              | APP. Customer Drawing Nr. C 8-1393485-7 |  | OF 4  |

V 4 2 2 5 4 - A 5 \* \* \* - B \* \* \*

Anschlußausführung // connection type  
 2 AVG 26/28 Litze oder // AVG 26/28 stranded  
 AVG 28/30 Massiv // or AVG 28/30 solid


Anschlußoberfläche // tail surface  
 3 verzinkt // tinned

Polzahl - Gehäusegröße // no. of contacts / housing size  
 09 9-polig - Gehäusegröße 1 // 9-contacts / housing size 1  
 15 15-polig - Gehäusegröße 2 // 15-contacts / housing size 2  
 25 25-polig - Gehäusegröße 3 // 25-contacts / housing size 3  
 37 37-polig - Gehäusegröße 4 // 37-contacts / housing size 4

| Steckverbinderunterscheidung // connector version |                    |  |  |   |
|---|--------------------|--|--|---|
|   | verzinkt<br>tinned | mit TE-<br>Beschriftung<br>auf Blechteil<br>with TE<br>marking on<br>the shell | mit Stop-<br>mutter<br>with self<br>locking nuts | mit Gewinde-<br>bolzen<br>with<br>screwlock<br>stud bolts |
| 2   | ja // yes          | ja // yes  | 4-4UNC   | nein // no  |
| 3   | ja // yes          | nein // no   | 4-4UNC   | nein // no  |
| 4   | ja // yes          | ja // yes  | M3   | nein // no  |
| 5   | ja // yes          | ja // yes  | nein // no                                       | nein // no  |
| 6   | ja // yes          | ja // yes  | nein // no                                       | 4-4UNC  |
| 7   | ja // yes          | nein // no   | nein // no                                       | nein // no  |
| 8   | ja // yes          | nein // no   | nein // no                                       | 4-4UNC  |
| 9   | ja // yes          | nein // no   | M3   | nein // no  |

Kontaktfläche / Kontaktart // contact surface / contact type  
 1 Anforderungsstufe 1 / gerollte Kontakte // performance level I / rolled contacts  
 2 Anforderungsstufe 2 / gerollte Kontakte // performance level II / rolled contacts

Steckerart // connector type  
 B Buchsenleiste // female connector

|   |              |   |        |
|---|--------------|---|--------|
|  TE Connectivity |              | SCALE   | WEIGHT |
| LOC DIMENSIONS IN MM  |              | MATERIAL  |        |
| DATE  | 06.05.91     | PART NAME   |        |
| NAME  | Sterctx      | Sub-D Schneidklemmanschluß                            |        |
| DEP.  | PE Com PE&SE | Buchsenleiste (für Flachleitungen / in Blister)       |        |
| TOLERANCE UNLESS SPECIFIED OTHERWISE  |              | D-Sub IDC   |        |
| SEE SHEET 1   |              | female connector (for ribbon cables/ in blister pack) |        |
| REV.  | CHANGE ORDER | DATE  | APP.   |
| 5   |              |   |        |
| Customer Drawing Nr. C 8-1393485-7  |              | PART NO.  | SH. 3+ |
|   |              | V42254-A523*-B***-*-27                                | OF 4   |

1

2

3

4

A

B

C

D

E



OBSOLETE PARTS: OBSOLETE CIS STREAMLINING PER D.RENAUD/D.SINISI

Active part numbers. Contact  
Tyco Electronics for  
other configuration availability

| Old Part Number   | TE Part Number         |            |
|-------------------|------------------------|------------|
| V42254-A5232-B209 | 8-1393485-7            |            |
| V42254-A5232-B215 | 8-1393485-8            |            |
| V42254-A5232-B225 | 8-1393485-9            |            |
| V42254-A5232-B237 | 9-1393485-0            |            |
| V42254-A5234-B115 | <del>2-1392010-3</del> | OBSOLETE → |
| V42254-A5234-B209 | 0-1393486-9            |            |
| V42254-A5234-B215 | 1-1393486-0            |            |
| V42254-A5234-B225 | 1-1393486-1            |            |
| V42254-A5234-B237 | 1-1393486-2            |            |
| V42254-A5235-B109 | <del>3-1393486-0</del> | OBSOLETE → |
| V42254-A5235-B115 | 3-1393486-1            |            |
| V42254-A5235-B125 | <del>3-1393486-2</del> | OBSOLETE → |
| V42254-A5235-B209 | 3-1393486-4            |            |
| V42254-A5235-B215 | 3-1393486-5            |            |
| V42254-A5235-B225 | 3-1393486-6            |            |
| V42254-A5235-B237 | 3-1393486-7            |            |
| V42254-A5237-B209 | <del>8-1393486-4</del> | OBSOLETE → |
| V42254-A5237-B215 | 8-1393486-6            |            |
| V42254-A5237-B225 | <del>8-1393486-8</del> | OBSOLETE → |
| V42254-A5237-B237 | <del>9-1393486-0</del> | OBSOLETE → |



TE Connectivity

|     |
|-----|
| LOC |
| GW  |

DIMENSIONS  
IN MM

SCALE

WEIGHT

MATERIAL

F

|      |              |   |                                    |
|------|--------------|---|------------------------------------|
| DATE | 06.05.91     | PART NAME   |                                    |
| NAME | Sterckx      | Sub-D Schneidklemmanschluß                            |                                    |
| DEP. | PE Com PE&SE | Buchsenleiste (für Flachleitungen / in Blister)       |                                    |
|      |              | D-Sub IDC   |                                    |
|      |              | female connector (for ribbon cables/ in blister pack) |                                    |
|      |              | PART NO.  | SHT.                               |
|      |              | V42254-A523*-B***-*-27                                | 4-                                 |
| REV. | CHANGE ORDER | DATE  | APP.                               |
|      |              |   | Customer Drawing Nr. C 8-1393485-7 |
|      |              |   | OF 4                               |

1

2

3

4