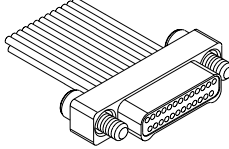
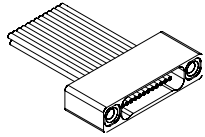


Series 891 Nanominiature TwistPin Connectors Dual Row Metal Shell With Insulated Wire 891-001 & 891-002

How To Order Series 891 Connectors with Insulated Wire

Series	Insert Arrangement/ Contact Type	Shell Matl/Finish	Wire Gauge	Wire Type	Wire Color Code	Wire length	Hardware				
891-001 Plug, Pin Contacts, Dual Row 	Plugs (891-001) 9P 15P 21P 25P 31P 37P 51P	A1 Aluminum Shell, Cadmium Plating A2 Aluminum Shell, Electroless Nickel Plating T Titanium Shell, Unplated	0 #30 AWG 2 #32 AWG (Wire Type B Only)	A Ultralightweight XLETFE Insulation, Silver-Coated Ultrahigh-Strength Copper (Not available for #32 AWG) B Extruded PTFE Insulation, Silver-Coated Copper, NEMA HP3-ETX (MIL-W-16878/6 Type)	1 White 7 10 Color Repeating	Wire Length in Inches (Example: "12" for 12 inches of wire)	J Jackscrew, #0-80 Threads T Female Thread				
								891-002 Receptacle, Metal Shell, Dual Row, Socket Contacts 	Receptacles (891-002) 9S 15S 21S 25S 31S 37S 51S	S Stainless Steel Shell, Passivated	C Cross-Linked Modified ETFE Insulation, Silver- Coated High-Strength Copper, MIL-W-22759/33 (Not available for #32 AWG)

Part Number Example

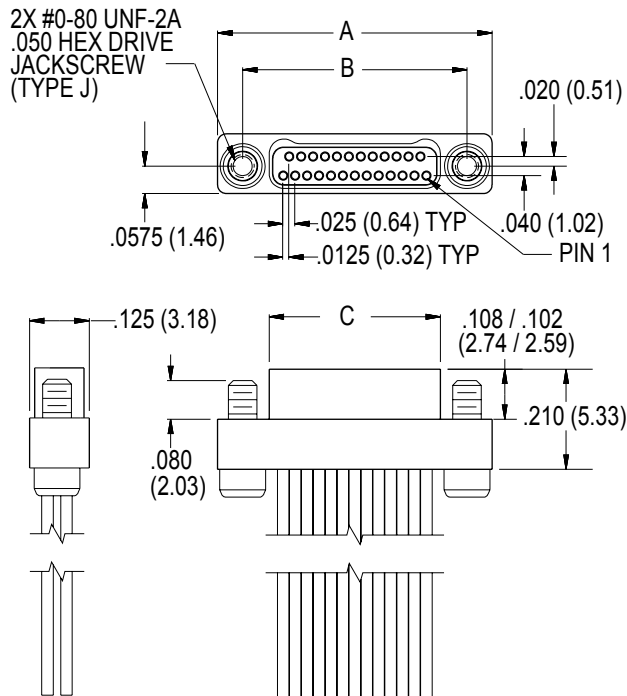
891-002	— 9S	A1	— 0	A	1	— 12	J
---------	------	----	-----	---	---	------	---

**Series 891 Nanominiature TwistPin Connectors
Dual Row Metal Shell With Insulated Wire
891-001 & 891-002**

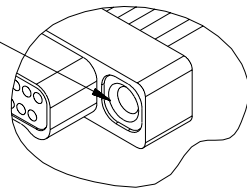


Series 891 Dual Row Metal Shell Dimensions

891-001 Pin Connectors

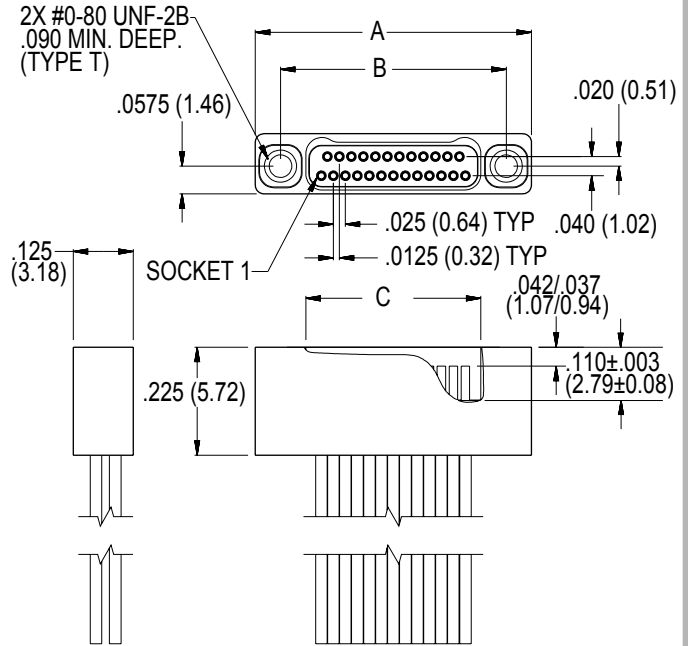


OPTIONAL
2X #0-80 UNF-2B
.090 MIN. THREAD
(TYPE T)

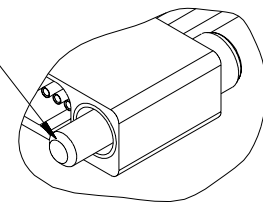


Layout	A	B BSC	C BSC
9P	.500 (12.70)	.395 (10.03)	.284 (7.21)
15P	.650 (16.51)	.545 (13.84)	.434 (11.02)
21P	.800 (20.32)	.695 (17.65)	.584 (14.83)
25P	.900 (22.86)	.795 (20.19)	.684 (17.37)
31P	1.050 (26.67)	.945 (24.00)	.834 (21.18)
37P	1.200 (30.48)	1.095 (27.814)	.984 (24.99)
51P	1.550 (39.37)	1.445 (36.70)	1.334 (33.88)

891-002 Socket Connectors



2X #0-80 UNF-2A
.050 HEX DRIVE
JACKSCREW
(TYPE J)



Layout	A	B BSC	C BSC
9S	.500 (12.70)	.395 (10.03)	.285 (7.24)
15S	.650 (16.51)	.545 (13.84)	.435 (11.05)
21S	.800 (20.32)	.695 (17.65)	.585 (14.86)
25S	.900 (22.86)	.795 (20.19)	.685 (17.40)
31S	1.050 (26.67)	.945 (24.00)	.835 (21.21)
37S	1.200 (30.48)	1.095 (27.814)	.985 (25.02)
51S	1.550 (39.37)	1.445 (36.70)	1.335 (33.91)