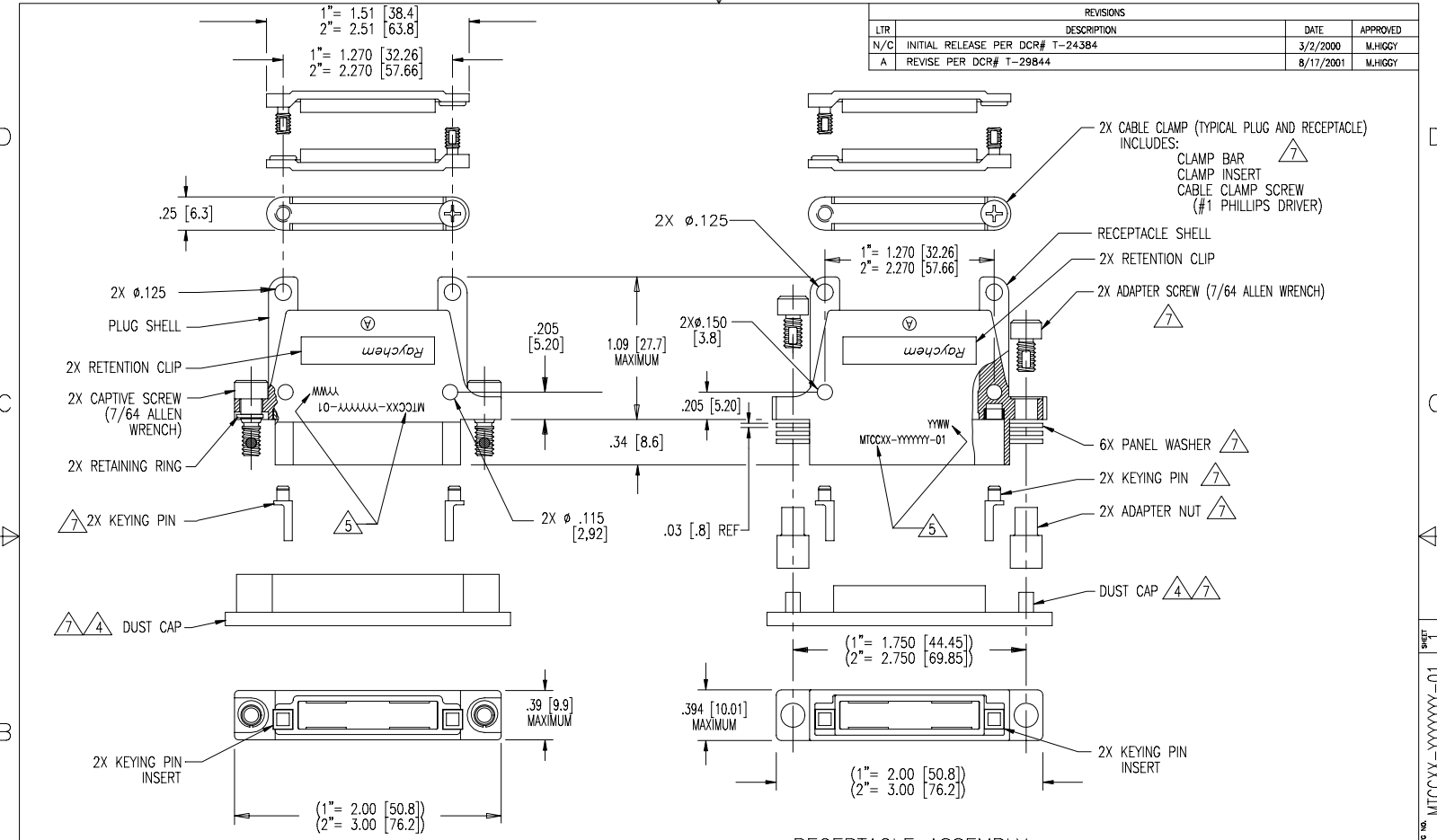


REVISIONS			
LTR	DESCRIPTION	DATE	APPROVED
N/C	INITIAL RELEASE PER DCR# T-24384	3/2/2000	M.HIGGY
A	REVISE PER DCR# T-29844	8/17/2001	M.HIGGY



**RECEPTACLE ASSEMBLY**

**PLUG ASSEMBLY**

SPECIFICATION CONTROL DRAWING			
UNLESS OTHERWISE SPECIFIED DIMENSIONS ARE IN INCHES. METRIC DIMENSIONS ARE IN BRACKETS.		DRAWN	ZS.ORBAN 2/29/2000
DECIMALS .XXX ± .005 { .13 mm } .XX ± .02 { .5 mm }		CHECKED	
ANGLES .X ±		APPROVED	
WEIGHT:		APPROVED	M.HIGGY 3/2/2000
		CAD NAME	T29844a,b,DWG
		THIRD ANGLE PROJECTION	
		<b>TUJCO/</b> <i>Electronics/Raychem</i> WIRE AND HARNESSING PRODUCTS 307 CONSTITUTION DRIVE MENLO PARK, CALIFORNIA 94025	
		TITLE SHELL, PLUG OR RECEPTACLE, SPECIAL MARKING, 1" AND 2" WITH EARS, CADMIUM PLATED	
SIZE	C	CODE IDENT. NO.	06090
DWG. NO.	MTCXX-YYYYY-01		REV
DO NOT SCALE THIS DRAWING		SHEET 1 OF 2	

NOTES: SEE SHEET 2.

4

3

2

1

NOTES:

1. PART NUMBER VARIABLES:

MTCCXX-YYYYY-01

01= WITH CABLE CLAMP

CUSTOMER SPECIFIED PART MARKING  
(ANY LENGTH)

SHELL TYPES:

P= PLUG WITH EARS

R= RECEPTACLE WITH EARS

CONNECTOR WIDTH:

1= 1 INCH

2= 2 INCH

PART NUMBER	WEIGHT MAXIMUM GRAMS
MTCC1R-YYYYY-01	27.3
MTCC1P-YYYYY-01	23.8
MTCC2R-YYYYY-01	38.3
MTCC2P-YYYYY-01	34.2

2. MATERIAL:

- A) SHELL ALUMINUM ALLOY PER QQ-A-591
- B) RETENTION CLIP COPPER ALLOY 172 PER QQ-C-533
- C) ADAPTER SCREW OR CAP SCREW STAINLESS STEEL PER QQ-S-763, 300 SERIES
- D) ADAPTER NUT OR RETAINER BUSHING STAINLESS STEEL PER QQ-S-763, 300 SERIES
- E) PANEL OR LOCK WASHER STAINLESS STEEL PER QQ-S-763 OR QQ-S-766, 300 SERIES
- F) KEYING PIN HIGH GRADE POLYARYLENE THERMOPLASTIC, MOLDED
- G) KEY PINS INSERT HIGH GRADE POLYARYLENE THERMOPLASTIC, MOLDED
- H) CLAMP BAR STAINLESS STEEL PER QQ-S-763, 300 SERIES
- J) CLAMP INSERT SILICONE ELASTOMER PER MIL-R-25988
- K) CAPTIVE SCREW STAINLESS STEEL PER QQ-S-763, 300 SERIES
- L) RETAINING RING COPPER ALLOY 172 PER QQ-C-533
- M) DUST CUP POLYETHYLENE LOW DENSITY PER L-P-390, COLOR RED.

3. FINISH: CADMIUM PLATED CONNECTORS

- A) SHELL CADMIUM PLATED PER QQ-P-416 OVER NICKEL UNDERPLATE
- B) RETENTION CLIP CADMIUM PLATED PER QQ-P-416
- C) ADAPTER OR CAP SCREW CADMIUM PLATED PER QQ-P-416
- D) ADAPTER NUT OR RETAINER BUSHING CADMIUM PLATED PER QQ-P-416
- E) PANEL OR LOCK WASHER CADMIUM PLATED PER QQ-P-416
- F) CLAMP BAR CADMIUM PLATED PER QQ-P-416
- G) CAPTIVE SCREW CADMIUM PLATED PER QQ-P-416
- H) RETAINING RING CADMIUM PLATED PER QQ-P-416

4. DUST CAP SUPPLIED WITH EACH PLUG OR RECEPTACLE.

5. APPROPRIATE PART NUMBER AND DATE CODE ARE STAMPED APPROXIMATELY AS SHOWN.

6. THESE PARTS MEET THE REQUIREMENTS OF RAYCHEM SPECIFICATION C-6111.

7. INDICATED PARTS ARE SHIPPED LOOSE.

8. SEE TABLE I, WEIGHTS ARE WITHOUT DUST CAP.

4

3

2

1

DWG. NO.	MTCCXX-YYYYY-01	REV	A
CAD FILE No.:	T29044b.DWG	SHEET	2 OF 2

DWG No. MTCCXX-YYYYY-01 SHEET 2