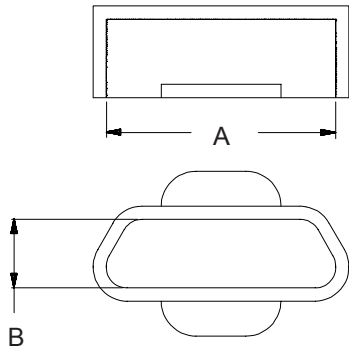


Micro-D Dust Caps and Interfacial Seals



MIL-DTL-83513
Micro-D

MOLDED PLASTIC DUST CAPS

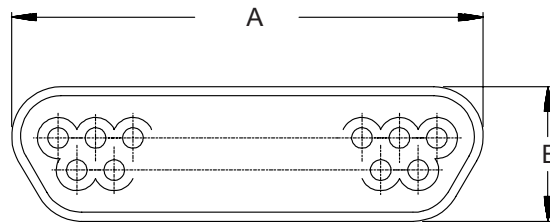


Anti-static micro-D dust caps are available to fit all sizes of Metal Shell Micro-D connectors. These dust caps are injection-molded from a rugged plastic material that resists cracking and provides protection.

Material: Polypropylene, anti-static, color black.

| Layout | Part Number | A Ref. | B Ref. |
|--------|---------------|--------------|------------|
| 9P | 000-01-09-162 | .315 (8.0) | .184 (4.7) |
| 9S | 000-01-09-163 | .385 (9.8) | .250 (6.4) |
| 15P | 000-01-15-162 | .465 (11.8) | .184 (4.7) |
| 15S | 000-01-15-163 | .535 (13.6) | .250 (6.4) |
| 21P | 000-01-21-162 | .615 (15.6) | .184 (4.7) |
| 21S | 000-01-21-163 | .685 (17.4) | .250 (6.4) |
| 25P | 000-01-25-162 | .715 (18.2) | .184 (4.7) |
| 25S | 000-01-25-163 | .785 (19.9) | .250 (6.4) |
| 31P | 000-01-31-162 | .865 (22.0) | .184 (4.7) |
| 31S | 000-01-31-163 | .935 (23.7) | .250 (6.4) |
| 37P | 000-01-37-162 | 1.015 (25.8) | .184 (4.7) |
| 37S | 000-01-37-163 | 1.085 (27.6) | .250 (6.4) |
| 51P | 000-01-51-162 | .965 (24.5) | .227 (5.8) |
| 51S | 000-01-51-163 | 1.035 (26.3) | .292 (7.4) |
| 100P | 000-01-00-162 | 1.364 (34.6) | .270 (6.9) |
| 100S | 000-01-00-163 | 1.437 (36.5) | .338 (8.6) |

MICRO-D INTERFACIAL SEALS FOR MWDM SOCKET CONNECTORS



Micro-D interfacial seals are available for metal shell socket connectors. Intended for use as field replacements for damaged seals, these seals are molded from fluoroelastomer and meet NASA outgassing requirements.

Material: Blue fluoroelastomer per ZZ-R-765.

| Layout | Part Number | A Ref. | B Ref. |
|--------|---------------|--------------|------------|
| 9S | 000-01-09-132 | .330 (8.4) | .180 (4.6) |
| 15S | 000-01-15-132 | .480 (12.2) | .180 (4.6) |
| 21S | 000-01-21-132 | .630 (16.0) | .180 (4.6) |
| 25S | 000-01-25-132 | .730 (18.5) | .180 (4.6) |
| 31S | 000-01-31-132 | .880 (22.4) | .180 (4.6) |
| 37S | 000-01-37-132 | 1.030 (26.2) | .180 (4.6) |
| 51S | 000-01-51-132 | .976 (24.8) | .223 (5.7) |
| 100S | 000-01-00-132 | 1.386 (35.2) | .270 (6.9) |

Metric dimensions (mm) are indicated in parentheses.