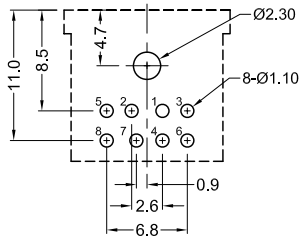
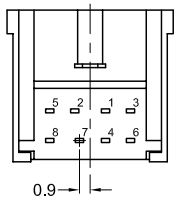
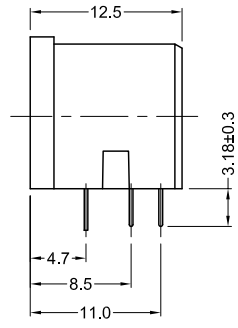


KMDGX-8S-N  
(8 position)



Recommended PCB Layout  
(Bottom View)

**Material and Finish**

Body: PBT Thermoplastic,  
UL94V-0 Rated, Black  
Contacts: Copper Alloy  
Gold Flash Plated on contact area,  
Tin on Termination,  
all over Nickel Underplate

**Electrical Characteristics**

Contact Resistance:  
Before Test:  
Plug to Terminals: 30 Milliohms Max.  
After Test:  
Plug to Terminals: 60 Milliohms Max.  
Insulation Resistance:  
500 Megohms Min. at 500 VDC  
Dielectric Withstanding Voltage:  
500V AC RMS For 1 Minute  
Current Rating:  
2 A at 12V DC

**Mechanical Characteristics**

Durability Test: 500 Cycles Min.  
Insertion Force: 4.5kg max.  
Extraction Force: 0.4kg - 3.5kg  
Operating Temperature: -25°C to +85°C

KMDGX-3S-N (3 position)	KMDGX-4S-N (4 position)	KMDGX-5S-N (5 position)	KMDGX-6S-N (6 position)	KMDGX-7S-N (7 position)

Recommended PCB Layouts (Bottom View)

**RoHS COMPLIANT**  
EU Directive 2002/95/EC

Tolerances  
X.X ± 0.25  
X.XX ± 0.15  
Unless Stated  
Otherwise

REV.	DATE	DESCRIPTION	REV. BY	CHK. BY	DRAWN BY	DATE
A0	3/23/05	New Drawing	H. MA	C. Furumasa	H. MA	3/18/05
A1	8/23/05	change current rating	R. Aguirre	H. MA		
B1	08/27/08	ECO# 08-063	S. Vien	H. MA		
B2	05/11/10	ECO #10-026	S. Vien	H. MA		

**KMDGX-xS-N**

Circular Mini-DIN, Gold Flash Contacts  
Non-shielded, RoHS Compliant

