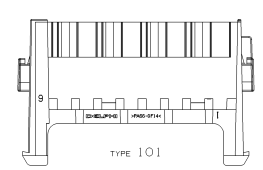
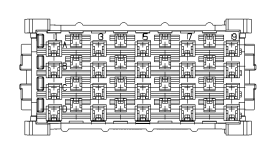
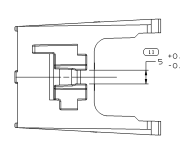
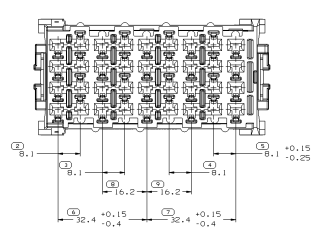
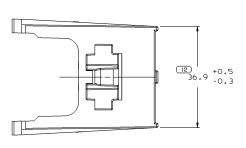
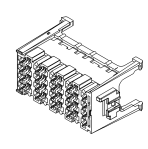
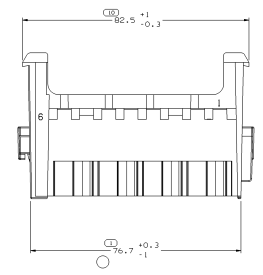
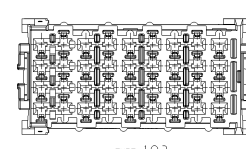
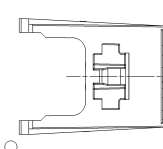
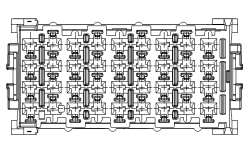
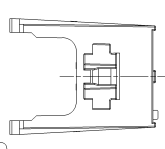


SYMBOL DEFINITION		MISSING NUMBERS		REV STATUS		REVISION HISTORY		DATE	BY	CHKD	APP'D
A DIMENSION WITHOUT TOTAL NO.	SYMBOLS	12		12/05/05	R	02					
AN INSPECTION REPORT SYMBOL (I) DOES NOT REQUIRE INSPECTION. IT MAY BE CONTROLLED ON AN INDIVIDUAL COMPONENT DRAWING.	BRANDING			09/03/05	R	04					
	LAST NO. USED	12									



- NOTES
- UNLESS OTHERWISE SPECIFIED AND/OR INDICATED, DIMENSIONS ARE TO FACE OF VIEW SHOWN AND AUTOMATICALLY ROUNDED BY COMPUTER FOR INSPECT ALL DIMENSIONS FOR PRECISE DIMENSIONS FOR TOOL BUILD. SEE MATH MODEL FOR PRECISE TOOL PATH DATA. ALL DIMENSIONS MUST BE SHOWN BUT NECESSARY FOR TOOL BUILD. DRAFT IS 1:1 ON ALL OUTSIDE SURFACES. LINE CAVITIES ARE IDENTICAL. MOUNTING FEATURES ARE IDENTICAL.
 - TOOL CAVITY IDENTIFICATION SHOULD BE LOCATED AS CLOSE TO THE DATE AS POSSIBLE.
 - MATERIAL RECYCLING CODE 3PA66-0F14C PER SAE J1344. (2,3)X10, (1) RAISED CHARACTERS AS SHOWN TO BE LOCATED ON ANY EXTERIOR SURFACE. OPTIONAL CONSTRUCTION TO BE NO MATERIAL RECYCLING CODE.
 - (2,3)X10, (1) RAISED DELPHI CORPORATE BRAND TO BE LOCATED ON ANY EXTERIOR SURFACE, PREFERABLY VISIBLE AT FINAL ASSEMBLY. OPTIONAL CONSTRUCTION TO BE "PED" OR NO LOGO.



TYPE 102
SAME AS TYPE 101
EXCEPT AS SHOWN

TYPE 103
SAME AS TYPE 101
EXCEPT AS SHOWN

PART NO	REV	U/P	STATUS	MATERIAL SPECIFICATION AND COLOR	TYPE	VOLUME CM ³
15393430	01	AB		M2279025 PA66 GF14 HS TM GRN MD	103	49.069
15105994	05			M2279001 PA66 GF14 HS TM BUK	101	48.571
12160462	04			M2279019 PA66 GF14 HS TM GRN BK	102	48.771
12129029	01		OBSOLETE	R027113 PA66 GF14 HS BUK	101	

DELPHI
DELPHI PACKAGING ELECTRIC SYSTEM
WARR, IN

PART DRAWING

DATE: 12/05/05
REV: 02
BY: [Signature]
CHKD: [Signature]
APP'D: [Signature]

ISSUE: 02

DESCRIPTION: TAXI BASE FUS BLK 35F M/P 280 FLXK

QUANTITY: 12160486

SCALE: 1:1

DATE: 12/05/05

TIME: 10:10

BY: [Signature]

CHKD: [Signature]

APP'D: [Signature]