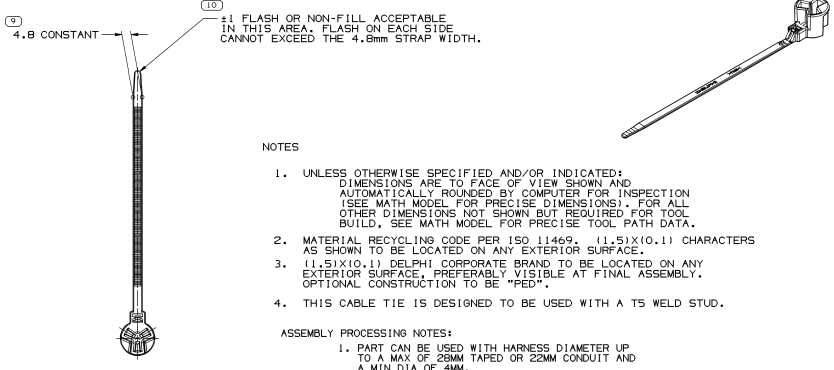
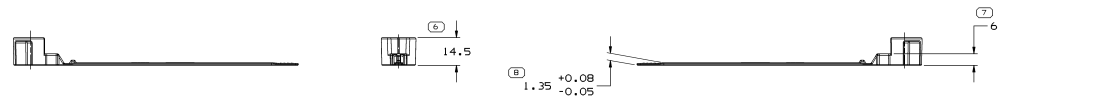
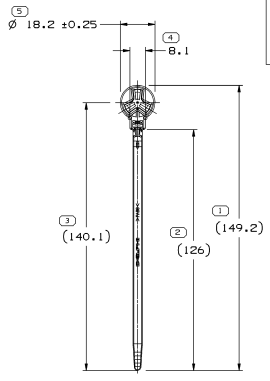


SYMBOL DEFINITION		MISSING SYMBOLS	
A DIMENSION WITHOUT AN INSPECTION REPORT SYMBOL ( ) DOES NOT REQUIRE INSPECTION. IT MAY BE CONTROLLED ON THE INDIVIDUAL COMPONENT DRAWING.	TOTAL NO OF INSPECTIONS REQUIRED	NO MISSING SYMBOL NUMBER	10
	LAST NO. USED		10

DATE	REV	BY	CHK	ZONE	REVISION HISTORY	AUTH	DR	APPROV
09.JUN03	R 01	-	-	-	WAS PE117888 AND RELEASED	242303	ECB	AUG03
10.OCT03	R 02	-	-	-	ADDED R1B; REVISED MATERIAL RECYCLING CODE NOTE	247227	ADK	BB 06D
21.OCT03	R 03	-	-	-	REVISED MODEL & UPDATED PDM ATTRIBUTES	247594	EESEES	06D
27.OCT03	R 03	AA	-	-	REVISED MODEL & UPDATED PDM ATTRIBUTES	247995	EESEES	06D
19.FEB04	R 04	-	-	-	UPDATED MAT'L M3592018 WAS M3592025; REVISED NOTE, LOCK, STRAP AND DIM 9.	252172	DAD	DAD 06D
14.APR04	R 04	AA	-	-	REVISED DIMS & NOTE IN TOG	253847	LMB	LMB 06D
19.APR04	R 04	AB	-	-	REVISED PRINT TO MATCH PART	254185	RH	RH 06D
21.APR04	R 04	AC	-	-	ADDED FLASH NOTE	254306	MAC	MAC 06D
10.SEP04	R 04	AD	-	-	UPDATED FORMAT AND PDM ATTRIBUTES	258911	BRB	BRB 06D
22.SEP04	R 04	AE	-	-	PART OBSOLETE, REPLACED BY 13512189	259436	LMB	LMB 06D
09.OCT04	R 04	AF	-	-	REINSTATED & UPDATED PDM ATTRIBUTES	261828	JTF	JTF 06D
26.SEP05	R 05	-	-	-	REVISED MODEL AND UPDATED PDM ATTRIBUTES	272217	EESEES	06D
06.JAN06	R 05	AA	-	-	ES053054503/03 WAS 53054531/01	276154	C.P.C.	06D



NOTES

- UNLESS OTHERWISE SPECIFIED AND/OR INDICATED: DIMENSIONS ARE TO FACE OF VIEW SHOWN AND AUTOMATICALLY ROUNDED BY COMPUTER FOR INSPECTION (SEE MATH MODEL FOR PRECISE DIMENSIONS). FOR ALL OTHER DIMENSIONS NOT SHOWN BUT REQUIRED FOR TOOL BUILD, SEE MATH MODEL FOR PRECISE TOOL PATH DATA.
- MATERIAL RECYCLING CODE PER ISO 11469. (1.5)(10.1) CHARACTERS AS SHOWN TO BE LOCATED ON ANY EXTERIOR SURFACE.
- (1.5)(10.1) DELPHI CORPORATE BRAND TO BE LOCATED ON ANY EXTERIOR SURFACE, PREFERABLY VISIBLE AT FINAL ASSEMBLY. OPTIONAL CONSTRUCTION TO BE "PED".
- THIS CABLE TIE IS DESIGNED TO BE USED WITH A T5 WELD STUD.

ASSEMBLY PROCESSING NOTES:

- PART CAN BE USED WITH HARNESS DIAMETER UP TO A MAX OF 28MM TAPED OR 22MM CONDUIT AND A MIN DIA OF 4MM.
- APPLY TO HARNESS WITH PANDUIT GUN GS2B (MANUAL). GUN TO BE SET AT "STD" AND A TENSION OF 6-8.

DIMENSIONAL RANGE (MM)	GRADE - F1	GRADE - F2
FROM 15 TO 20	15	20
20 TO 25	20	25
25 TO 30	25	30
30 TO 35	30	35
35 TO 40	35	40
40 TO 45	40	45
45 TO 50	45	50
50 TO 55	50	55
55 TO 60	55	60
60 TO 65	60	65
65 TO 70	65	70
70 TO 75	70	75
75 TO 80	75	80
80 TO 85	80	85
85 TO 90	85	90
90 TO 95	90	95
95 TO 100	95	100
100 TO 105	100	105
105 TO 110	105	110
110 TO 115	110	115
115 TO 120	115	120
120 TO 125	120	125
125 TO 130	125	130
130 TO 135	130	135
135 TO 140	135	140
140 TO 145	140	145
145 TO 150	145	150
150 TO 155	150	155
155 TO 160	155	160
160 TO 165	160	165
165 TO 170	165	170
170 TO 175	170	175
175 TO 180	175	180
180 TO 185	180	185
185 TO 190	185	190
190 TO 195	190	195
195 TO 200	195	200
200 TO 205	200	205
205 TO 210	205	210
210 TO 215	210	215
215 TO 220	215	220
220 TO 225	220	225
225 TO 230	225	230
230 TO 235	230	235
235 TO 240	235	240
240 TO 245	240	245
245 TO 250	245	250
250 TO 255	250	255
255 TO 260	255	260
260 TO 265	260	265
265 TO 270	265	270
270 TO 275	270	275
275 TO 280	275	280
280 TO 285	280	285
285 TO 290	285	290
290 TO 295	290	295
295 TO 300	295	300
300 TO 305	300	305
305 TO 310	305	310
310 TO 315	310	315
315 TO 320	315	320
320 TO 325	320	325
325 TO 330	325	330
330 TO 335	330	335
335 TO 340	335	340
340 TO 345	340	345
345 TO 350	345	350
350 TO 355	350	355
355 TO 360	355	360
360 TO 365	360	365
365 TO 370	365	370
370 TO 375	370	375
375 TO 380	375	380
380 TO 385	380	385
385 TO 390	385	390
390 TO 395	390	395
395 TO 400	395	400
400 TO 405	400	405
405 TO 410	405	410
410 TO 415	410	415
415 TO 420	415	420
420 TO 425	420	425
425 TO 430	425	430
430 TO 435	430	435
435 TO 440	435	440
440 TO 445	440	445
445 TO 450	445	450
450 TO 455	450	455
455 TO 460	455	460
460 TO 465	460	465
465 TO 470	465	470
470 TO 475	470	475
475 TO 480	475	480
480 TO 485	480	485
485 TO 490	485	490
490 TO 495	490	495
495 TO 500	495	500

DRW TYPE: PART DRAWING

STYLE: 2.437

DISTR CODE: D

UNLESS OTHERWISE SPECIFIED:  
 THIS DOCUMENT IS IN ACCORDANCE WITH ENGINEERING DRAWING STANDARD YD-100, 101, 102, 103, 104, 105, 106, 107, 108, 109, 110, 111, 112, 113, 114, 115, 116, 117, 118, 119, 120, 121, 122, 123, 124, 125, 126, 127, 128, 129, 130, 131, 132, 133, 134, 135, 136, 137, 138, 139, 140, 141, 142, 143, 144, 145, 146, 147, 148, 149, 150, 151, 152, 153, 154, 155, 156, 157, 158, 159, 160, 161, 162, 163, 164, 165, 166, 167, 168, 169, 170, 171, 172, 173, 174, 175, 176, 177, 178, 179, 180, 181, 182, 183, 184, 185, 186, 187, 188, 189, 190, 191, 192, 193, 194, 195, 196, 197, 198, 199, 200, 201, 202, 203, 204, 205, 206, 207, 208, 209, 210, 211, 212, 213, 214, 215, 216, 217, 218, 219, 220, 221, 222, 223, 224, 225, 226, 227, 228, 229, 230, 231, 232, 233, 234, 235, 236, 237, 238, 239, 240, 241, 242, 243, 244, 245, 246, 247, 248, 249, 250, 251, 252, 253, 254, 255, 256, 257, 258, 259, 260, 261, 262, 263, 264, 265, 266, 267, 268, 269, 270, 271, 272, 273, 274, 275, 276, 277, 278, 279, 280, 281, 282, 283, 284, 285, 286, 287, 288, 289, 290, 291, 292, 293, 294, 295, 296, 297, 298, 299, 300, 301, 302, 303, 304, 305, 306, 307, 308, 309, 310, 311, 312, 313, 314, 315, 316, 317, 318, 319, 320, 321, 322, 323, 324, 325, 326, 327, 328, 329, 330, 331, 332, 333, 334, 335, 336, 337, 338, 339, 340, 341, 342, 343, 344, 345, 346, 347, 348, 349, 350, 351, 352, 353, 354, 355, 356, 357, 358, 359, 360, 361, 362, 363, 364, 365, 366, 367, 368, 369, 370, 371, 372, 373, 374, 375, 376, 377, 378, 379, 380, 381, 382, 383, 384, 385, 386, 387, 388, 389, 390, 391, 392, 393, 394, 395, 396, 397, 398, 399, 400, 401, 402, 403, 404, 405, 406, 407, 408, 409, 410, 411, 412, 413, 414, 415, 416, 417, 418, 419, 420, 421, 422, 423, 424, 425, 426, 427, 428, 429, 430, 431, 432, 433, 434, 435, 436, 437, 438, 439, 440, 441, 442, 443, 444, 445, 446, 447, 448, 449, 450, 451, 452, 453, 454, 455, 456, 457, 458, 459, 460, 461, 462, 463, 464, 465, 466, 467, 468, 469, 470, 471, 472, 473, 474, 475, 476, 477, 478, 479, 480, 481, 482, 483, 484, 485, 486, 487, 488, 489, 490, 491, 492, 493, 494, 495, 496, 497, 498, 499, 500, 501, 502, 503, 504, 505, 506, 507, 508, 509, 510, 511, 512, 513, 514, 515, 516, 517, 518, 519, 520, 521, 522, 523, 524, 525, 526, 527, 528, 529, 530, 531, 532, 533, 534, 535, 536, 537, 538, 539, 540, 541, 542, 543, 544, 545, 546, 547, 548, 549, 550, 551, 552, 553, 554, 555, 556, 557, 558, 559, 560, 561, 562, 563, 564, 565, 566, 567, 568, 569, 570, 571, 572, 573, 574, 575, 576, 577, 578, 579, 580, 581, 582, 583, 584, 585, 586, 587, 588, 589, 590, 591, 592, 593, 594, 595, 596, 597, 598, 599, 600, 601, 602, 603, 604, 605, 606, 607, 608, 609, 610, 611, 612, 613, 614, 615, 616, 617, 618, 619, 620, 621, 622, 623, 624, 625, 626, 627, 628, 629, 630, 631, 632, 633, 634, 635, 636, 637, 638, 639, 640, 641, 642, 643, 644, 645, 646, 647, 648, 649, 650, 651, 652, 653, 654, 655, 656, 657, 658, 659, 660, 661, 662, 663, 664, 665, 666, 667, 668, 669, 670, 671, 672, 673, 674, 675, 676, 677, 678, 679, 680, 681, 682, 683, 684, 685, 686, 687, 688, 689, 690, 691, 692, 693, 694, 695, 696, 697, 698, 699, 700, 701, 702, 703, 704, 705, 706, 707, 708, 709, 710, 711, 712, 713, 714, 715, 716, 717, 718, 719, 720, 721, 722, 723, 724, 725, 726, 727, 728, 729, 730, 731, 732, 733, 734, 735, 736, 737, 738, 739, 740, 741, 742, 743, 744, 745, 746, 747, 748, 749, 750, 751, 752, 753, 754, 755, 756, 757, 758, 759, 760, 761, 762, 763, 764, 765, 766, 767, 768, 769, 770, 771, 772, 773, 774, 775, 776, 777, 778, 779, 780, 781, 782, 783, 784, 785, 786, 787, 788, 789, 790, 791, 792, 793, 794, 795, 796, 797, 798, 799, 800, 801, 802, 803, 804, 805, 806, 807, 808, 809, 810, 811, 812, 813, 814, 815, 816, 817, 818, 819, 820, 821, 822, 823, 824, 825, 826, 827, 828, 829, 830, 831, 832, 833, 834, 835, 836, 837, 838, 839, 840, 841, 842, 843, 844, 845, 846, 847, 848, 849, 850, 851, 852, 853, 854, 855, 856, 857, 858, 859, 860, 861, 862, 863, 864, 865, 866, 867, 868, 869, 870, 871, 872, 873, 874, 875, 876, 877, 878, 879, 880, 881, 882, 883, 884, 885, 886, 887, 888, 889, 890, 891, 892, 893, 894, 895, 896, 897, 898, 899, 900, 901, 902, 903, 904, 905, 906, 907, 908, 909, 910, 911, 912, 913, 914, 915, 916, 917, 918, 919, 920, 921, 922, 923, 924, 925, 926, 927, 928, 929, 930, 931, 932, 933, 934, 935, 936, 937, 938, 939, 940, 941, 942, 943, 944, 945, 946, 947, 948, 949, 950, 951, 952, 953, 954, 955, 956, 957, 958, 959, 960, 961, 962, 963, 964, 965, 966, 967, 968, 969, 970, 971, 972, 973, 974, 975, 976, 977, 978, 979, 980, 981, 982, 983, 984, 985, 986, 987, 988, 989, 990, 991, 992, 993, 994, 995, 996, 997, 998, 999, 1000.

**DELPHI**  
 DELPHI PACKARD ELECTRIC SYSTEMS  
 WARREN, OH

DATE: 17.JUN03  
 DR: E.A. CAGHO  
 APPROV: A.USALDO  
 APPROV: GARY C. DETTER

15465829

SCALE: 1:1

SHEET NO: 1 OF 1

PART NO: 15465829

REV: 05