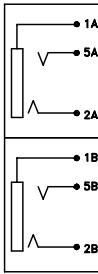
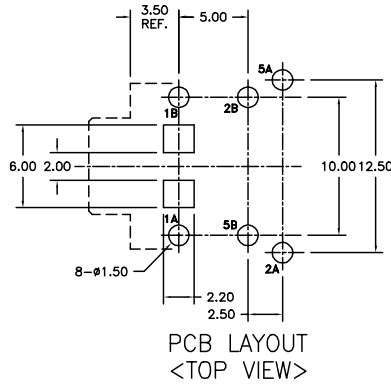


Schematic



Upper jack

Lower jack



PCB LAYOUT
<TOP VIEW>

Materials and Finish

Housing: Nylon 66 Thermoplastic
15% Glass Filled, Black
UL 94V-0 Rated
Color: Black

Terminals: Copper Alloy,
100u" Tin over Nickel Plated

Switch Housing: PBT Thermoplastic
Switch Slide Knob: POM
Switch Terminals: Copper Alloy, Silver Plated

Mechanical Characteristics

Insertion Force:
0.4kg - 3.0kg

Extraction Force:
0.4kg - 3.0kg

Durability: 5000 mating cycles

Electrical Characteristics

Contact Resistance:
Before Test: 50 mohms Max.
After Durability Test:
100 mohms Max.

Insulation Resistance:
More than 100 Megohms
at 500V DC

Dielectric Strength:
500V AC RMS for 1 minute

Operating Temp:
-25°C to +70°C


Voltage Rating:
16 Volts DC

Current Rating:
0.3 A

Max Process Temp:
With Jack mounted on PCB,
Terminals immersed in solder bath at
260±5°C for 10±1 sec.

CSA NRTL/C Certified File No. LR78160

Tolerances
X.X ± 0.25
X.XX ± 0.15
Unless Stated
Otherwise

REVISION	DATE	DESCRIPTION	DRAWN BY	DESIGNED BY	UNITS	ST-4235-3/3-N	Stacked 3.5mm/3.5mm Stereo Jacks	
A	12/7/98	New Drawing	K. Wallace		mm			
B1	2/12/99	Rev Dims and Tols	CHECKED BY	APPROVED BY	DATE			
B2	4/19/01	ECO 01-063	M. Yiu		12/7/98		3 Position over 3 Position	