

Materials and Finish

Housing: LCP (reflow compatible),
UL 94V-0 Rated

Terminals: Copper Alloy,
Gold Flash all over
Nickel Plating

Recommended Soldering Temp.:
230°C for 30 seconds
260°C maximum

Mechanical Characteristics

Insertion Force:
0.4kg - 2.0kg

Extraction Force:
0.3kg - 2.0kg

Durability: 5000 mating cycles

Electrical Characteristics

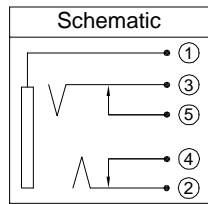
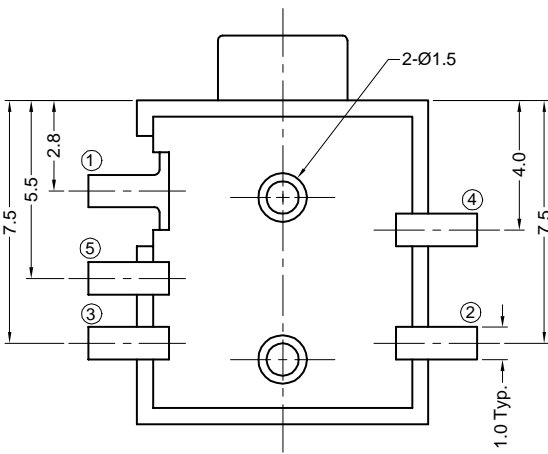
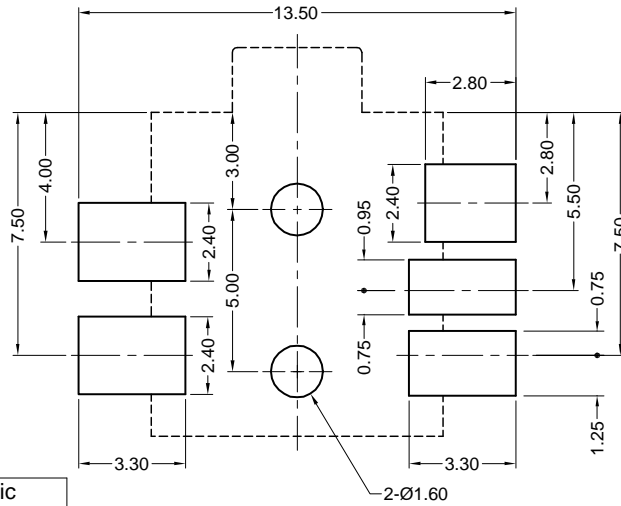
Contact Resistance:
Before Test: 30milliohms Max.
After Durability Test:
60 milliohms Max.

Insulation Resistance:
More than 100 Megohms
at 250V DC

Dielectric Strength:
250V AC RMS for 1 minute

Operating Temp:
-25°C to +85°C

**Recommended PCB Layout
(top view)**



Part Number	Packaging
ST-2550-5N	Bulk
ST-2550-5N-TR	Tape and Reel

Tolerances
X.X ± 0.25
X.XX ± 0.15
Unless Stated
Otherwise

CSA NRTL/C Certified File No. LR78160

REVISION	DATE	DESCRIPTION	DRAWN BY	CHECKED BY	UNITS
G2	9/13/00	Ref ECD 00-124	C. Leiva	T. Gokcek	mm [in.]
H1	2/15/01	Ref ECD 01-040	REVISED BY	CHECK DATE	DATE
H2	12/9/02	Ref ECD 02-139	C. Leiva	12/9/02	6/9/97

ST-2550-5N

Stereo Jack

All Plastic Body, Rt. Ang., SMT Type

