

Material and Finish

Insulator: ABS Thermoplastic, UL94-HB Rated, Black Color

RCA Jack Color:
 Jack A: Yellow (ABS)
 Jack B: White (ABS)
 Jack C: Red (ABS)

RCA Barrel, Pin R1: SPCC, Nickel Plated

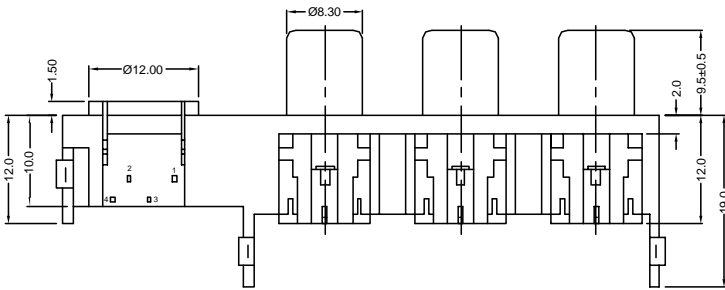
RCA Pin R2, R2A: Brass, Tin plated on termination end, Silver plated on contact

Mini-DIN Shell: Brass, Nickel Plated

Mini-DIN Contacts: Phosphor Bronze, Tin Plated

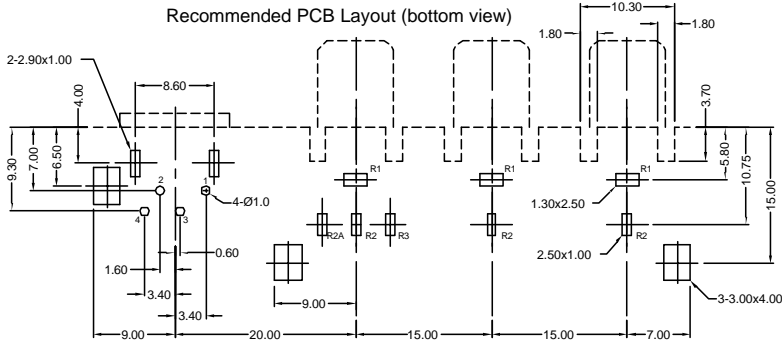
Electrical Specifications:

Operating Temperature:
 -25°C to +70°C

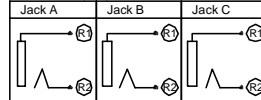


Part Number	Switch Locations A/B/C
KLPMDGX-4L-YWR-222	None
KLPMDGX-4L-YWR-322	A only
KLPMDGX-4L-YRW-333	A/B/C

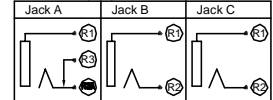
Recommended PCB Layout (bottom view)



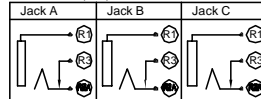
Schematic (222)



Schematic (322)



Schematic (333)



RoHS COMPLIANT
 EU Directive 2002/95/EC

Tolerances
X.X ± 0.25
X.XX ± 0.15
Unless Stated Otherwise

REV.	DATE	DESCRIPTION	REV. BY	CHK. BY	DRAWN BY	DATE
A1	6/27/05	New Drawing	N.Chang	C. Furumasa	N.Chang	6/27/05
A2	03/12/08	ECO #08-020	R. Aguirre	H. Ma		

KLPMDGX-4L-YWR-xxx

RCA Jack, Ganged, with 4-Pin Mini Din
Right Angle, Left-shifted Mini-Din, RoHS Compliant

