

Materials and Finish

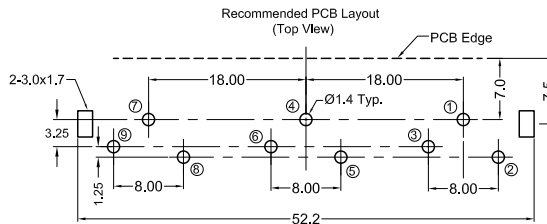
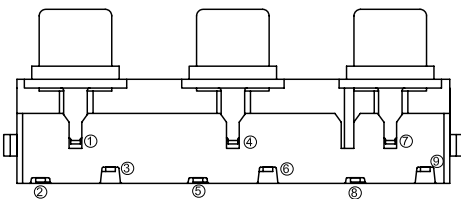
Housing: PBT UL 94V-0
 Color: Black
 Barrel: Brass
 Plating: Nickel Plated
 Terminals: Brass
 Plating: Tin Plated
 ground pin: Nickel Plated

Electrical Characteristics

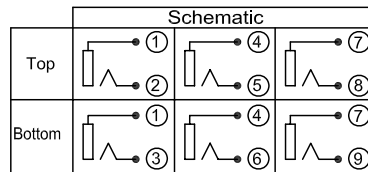
Rated Current: 0.3A Max.
 Rated Voltage: 16V DC
 Contact Resistance: 50 millohms Max.
 Insulation Resistance: 100 Megohms min. at 500V DC
 Withstanding Voltage: 500V AC RMS for 1 minute

Mechanical Characteristics

Insertion Force: 0.3kg - 5.0kg
 Extraction Force: 0.3kg - 5.0kg
 Durability: 1000 mating cycles min.
 Operating Temp: -20°C to +60°C



Part Number	Jack Color A	Jack Color B	Jack Color A1	Jack Color B1	Jack Color A2	Jack Color B2
KLP42X-62-BY/R/Y/WY	black	yellow	red	yellow	white	yellow
KLP42X-62-RR/W/W/Y	red	red	white	white	yellow	yellow
KLP42X-62-RW/R/W/RW	red	white	red	white	red	white
KLP42X-62-RW/R/W/Y	red	white	red	white	yellow	yellow
KLP42X-62-WR/W/R/W	white	red	white	red	white	red
KLP42X-62-WW/R/R/Y	white	white	red	red	yellow	yellow
KLP42X-62-YY/Y/Y/Y	yellow	yellow	yellow	yellow	yellow	yellow
KLP42X-62RR/WG/YBL	red	red	white	green	yellow	blue
KLP42X62RR/BLW/GY	red	red	blue	white	green	yellow
KLP42X62RR/GG/BLBL	red	red	green	green	blue	blue



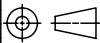
RoHS COMPLIANT
 EU Directive 2002/95/EC

Tolerances
X.X ± 0.25
X.XX ± 0.15
Unless Stated Otherwise

REV.	DATE	DESCRIPTION	REV. BY	CHK. BY	DRAWN BY	DATE
A3	4/26/06	ECO#06-030	H, MA	C, Furumasa	R, Aguirre	12/02/05
A4	9/21/06	Add more option	H, MA	C, Furumasa		
A5	10/26/06	Add more option	R, Aguirre	H, MA		
A6	03/12/08	ECO #08-020	R, Aguirre	H, MA		
A7	06/07/10	Add Dim	S, Vien	H, MA		
A8	4/12/11	Add Spec	S, Vien	H, MA		

KLP42X-62-xx/xx/xx

Stacked RCA Jack ,RoHS Compliant
 6 Jacks, Right Angle PCB Mount



UNITS
 mm