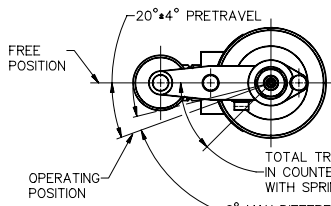
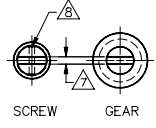


**M** 32EN1-6



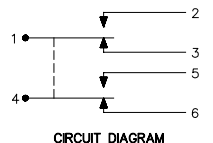
**CHARACTERISTICS**

TOTAL TRAVEL OF ROLLER LEVER IS 45°±3° IN COUNTERCLOCKWISE DIRECTION ONLY WITH SPRING RETURN TO NEUTRAL  
6° MAX DIFFERENTIAL TRAVEL

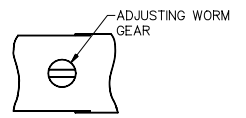


ROLLER LEVER MAY BE ADJUSTED FOR AN INFINITE NUMBER OF POSITIONS THRU 360°. ADJUSTMENT IS MADE BY LOOSENING THE LOCK NUT AND THEN THE SCREW AND TURNING GEAR UNTIL LEVER IS IN DESIRED POSITION. SCREW AND LOCK NUT ON SHAFT IS THEN TIGHTENED TO POSITIVELY LOCK LEVER IN POSITION.

**LEVER ADJUSTMENT DETAIL**  
SCALE 2:1

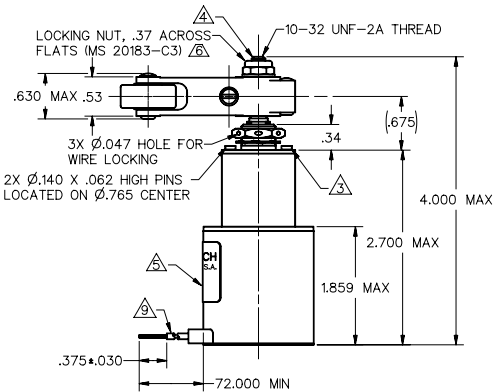
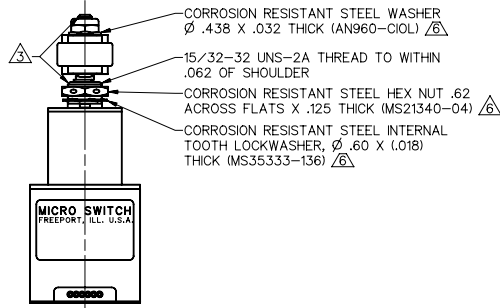
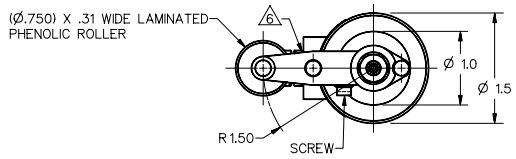


**CIRCUIT DIAGRAM**



**VIEW A-A**  
SCALE 2:1

- NOTES**
- 1 - CORROSION RESISTANT STEEL ENCLOSURE
  - 2 - SWITCH SEALED PER MIL-S-8805, SYMBOL 4
  - 3 CORROSION RESISTANT STEEL SHAFT, BUSHING AND PINS
  - 4 DO NOT APPLY MORE THAN 20-25 INCH-POUNDS OF TORQUE WHEN TIGHTENING LOCKING NUT
  - 5 CIRCUIT DIAGRAM, CATALOG LISTING AND MILITARY STANDARD NO. MS 21320-4 ARE SHOWN ON NAMEPLATE
  - 6 HARDWARE MAY BE PACKAGED UNASSEMBLED PER MIL-S-8805
  - 7 .050 WIDE X .050 DEEP SLOT
  - 8 Ø.037 HOLE FOR WIRE LOCKING
  - 9 6X NO 18 LEAD WIRE IN ACCORDANCE WITH SPEC MIL-W-22759/7 PERMANENTLY MARKED AT 3" INTERVALS OR LESS WITH SWITCH CIRCUIT IDENTIFICATION NUMBER FOLLOWED BY WIRE GAUGE NO (1-18, 2-18 ETC)



CHARACTERISTICS		ELECTRICAL DATA	
OPERATING TORQUE	12-25 IN LB	CONTACT ARRANGEMENT (SEE CIRCUIT DIAGRAM)	
RELEASE TORQUE	4 IN LB MIN	28 VDC	
PRETRAVEL	SEE DETAIL	LOAD	SEA LEVEL
DIFFERENTIAL TRAVEL		RES	50,000 FT
OVERTRAVEL		IND	6
FREE POSITION		MOTOR	6
FULL OVERTRAVEL TORQUE	40 IN-LB MAX		

THIS DRAWING COVERS A PROPRIETARY ITEM AND IS THE PROPERTY OF MICRO SWITCH, A DIVISION OF HONEYWELL. THIS DRAWING IS NOT TO BE COPIED OR USED WITHOUT THE APPROVAL OF MICRO SWITCH.

**MICRO SWITCH**  
a Honeywell Division

**SWITCH-ENCLOSED**

CATALOG LISTING  
**32EN1-6**

MILITARY STD. PART NUMBER  
MS21320-4

WEIGHT 15.5 OZ

32EN1-6  
 DRAWING NUMBER  
 50  
 ISSUE  
 REVISIONS  
 A  
 B  
 C  
 D  
 E  
 F  
 G  
 H  
 I  
 J  
 K  
 L  
 M  
 N  
 O  
 P  
 Q  
 R  
 S  
 T  
 U  
 V  
 W  
 X  
 Y  
 Z  
 DDW/CAD  
 G.R.T. 17 DEC 03  
 RELEASE NO. SRS3372  
 EXPLAINS