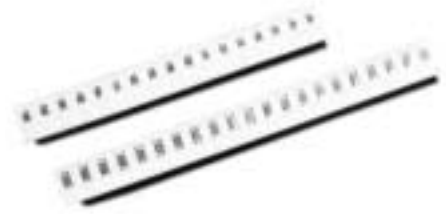


FEATURES

- High purity alumina substrate
- Wave or flow solderable
- Excellent high frequency characteristics
- Wrap around termination
- Inner electrode protection
- Resistance range 0Ω ~ 10MΩ

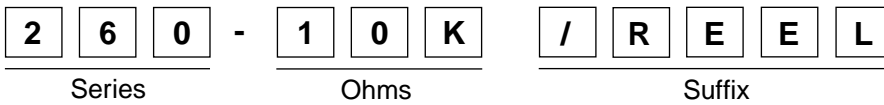


CHARACTERISTICS

Item	Characteristics
Oper. Temp. Range	-55°C ~ +125°C
Temp. Coefficient	<10Ω is -100~+600ppm/°C; 10~1MΩ is ±200ppm/°C; >1MΩ is -400~+100ppm/°C @ room temp. +100°C
Temperature Cycling	±(1.0% +0.1Ω) max. @ -55°C ~ +125°C
Short Time Overload	±(2.0% +0.1Ω) max. w/rated voltage x 2.5 for 5 sec.
Humidity Load Life	±(3.0% +0.1Ω) max. @40°C RH 90~95%
Load Life	±(3.0% +0.1Ω) max. @ 70°C

Item	Characteristics
Vibration	±(1.0% +0.1Ω) max. @ low frequency, 3 directions for 2 hours in each direction
Solderability	90% min. coverage @ 230°C for 3 seconds
Soldering Heat Resistance	±(2.5% +0.1Ω) max. @ 260°C for 10 seconds
Termination Adhesion	±(1.0% +0.1Ω) max. @ 500g
Zero Ohm Jumper	Upper limit .05Ω; Add current rating
Reel Quantity	5,000 per reel

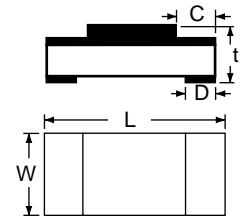
PART NUMBERING SYSTEM



Suffix Code:	Package:
-BK	Bulk
/REEL	Tape and Reel

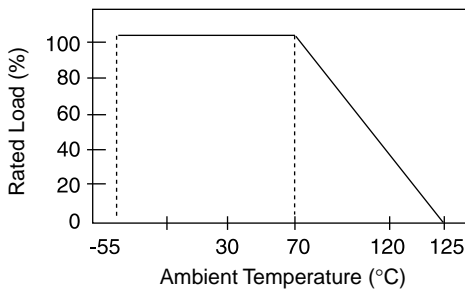
SERIES, SIZE, WATTAGE, VOLTAGE, AND DIMENSIONS

Series	Case Size	Power Rating	Power * Rating	Voltage (max.)		Dimensions (mm)				
				W.V.	O.V.	L	W	C	D	t
263	1206	1/8	1/4	200	400	3.1 ± 0.15	1.55 ± .10	0.45 ± 0.2	0.4 ± 0.2	.55 ± .10
260	0805	1/10	1/8	150	300	2.0 ± 0.15	1.25 ± .10	0.4 ± 0.2	0.4 ± 0.2	.55 ± .10
301	0603	1/16	1/10	50	100	1.60 ± .10	0.8 ± .10	0.3 ± .20	0.30 ± .20	.45 ± .10
303	0402	1/16		25	50	1.00 ± 0.1	0.5 ± 0.05	0.2 ± 0.1	0.25 ± 0.1	.35 ± 0.05

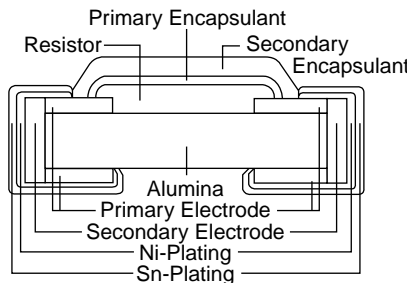


* Max. Power Rating @ 70°C, see Derating Curve.

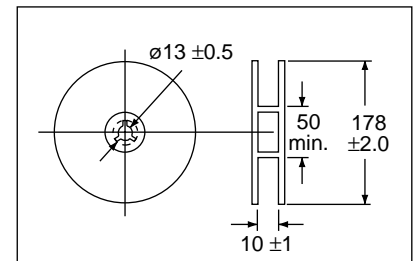
DERATING CURVE



STRUCTURE



REEL DIMENSIONS (mm)



STANDARD STOCKED VALUES (Ω)

0	2.0	4.3	9.1	20	43	91	200	430	910	2K	4.3K	9.1K	20K	43K	91K	200K	430K	820K	1.8M	3.9M	8.2M
1.0	2.2	4.7	10	22	47	100	220	470	1K	2.2K	4.7K	10K	22K	47K	100K	220K	470K	910K	2M	4.3M	9.1M
1.1	2.4	5.1	11	24	51	110	240	510	1.1K	2.4K	5.1K	11K	24K	51K	110K	240K	510K	1M	2.2M	4.7M	10M
1.2	2.7	5.6	12	27	56	120	270	560	1.2K	2.7K	5.6K	12K	27K	56K	120K	270K	560K	1.1M	2.4M	5.1M	
1.3	3.0	6.2	13	30	62	130	300	620	1.3K	3K	6.2K	13K	30K	62K	130K	300K	620K	1.2M	2.7M	5.6M	
1.5	3.3	6.8	15	33	68	150	330	680	1.5K	3.3K	6.8K	15K	33K	68K	150K	330K	660K	1.3M	3M	6.2M	
1.6	3.6	7.5	16	36	75	160	360	750	1.6K	3.6K	7.5K	16K	36K	75K	160K	360K	680K	1.5M	3.3M	6.8M	
1.8	3.9	8.2	18	39	82	180	390	820	1.8K	3.9K	8.2K	18K	39K	82K	180K	390K	750K	1.6M	3.6M	7.5M	