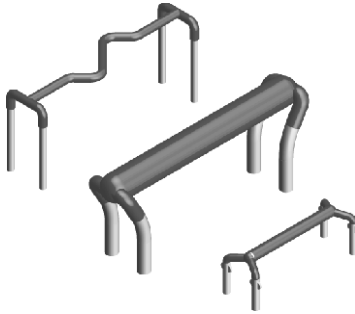


Wirewound Resistors, Two and Four Terminal, Low Ohmic Value for Current Sensing



MODELS
SPR0676
SPR2039
SPR2093

Special Purpose
Open Style
Designed for
Printed Circuit Boards

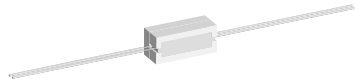
STANDARD ELECTRICAL SPECIFICATIONS				
GLOBAL MODEL	HISTORICAL MODEL	WATTAGE	RESISTANCE RANGE (Ω)	TYPICAL TOL.
SPR0676	SPR-676	1	0.0015 to 0.05	$\pm 0.5\%$
SPR2039	SPR-2039	3.5	0.0033 to 0.05	$\pm 1.0\%$
SPR2093	SPR-2093	(1)	0.0005 to 0.002	$\pm 1.5\%$

Note

(1) 13 W on 0.0005 Ω and 0.001 Ω , limited to 115 A. 10 W on 0.001 Ω and 0.002 Ω

DIMENSIONS in inches (millimeters)			
GLOBAL MODEL	HISTORICAL MODEL	HOLE PATTERN	TERMINAL DIAMETER
SPR0676	SPR-676	0.20 [5.08] x 0.70 [17.78]	0.040 [1.02]
SPR2039	SPR-2039	0.25 [6.35] x 1.0 [25.4]	0.051 [1.30]
SPR2093	SPR-2093	0.25 [6.35] x 1.0 [25.4]	0.081 [2.06]

Consult our engineering department for specific part numbers and detailed data sheets, see email address at the bottom of this page.



MODELS
SPR2073
SPR2123
SPR2091

Special Purpose
Ceramic Potted
Designed for
Rugged Applications

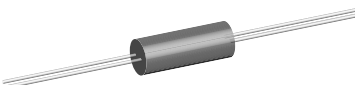
STANDARD ELECTRICAL SPECIFICATIONS				
GLOBAL MODEL	HISTORICAL MODEL	WATTAGE	RESISTANCE RANGE (Ω)	TYPICAL TOL.
SPR2073	SPR-2073	3 (2)	0.001 to 0.25	$\pm 1.0\%$
SPR2123	SPR-2123	5 (2)	0.001 to 0.25	$\pm 1.0\%$
SPR2091	SPR-2091	10 (2)	0.001 to 0.25	$\pm 1.0\%$

Note

(2) Limited to 25 A

DIMENSIONS in inches (millimeters)					
GLOBAL MODEL	HISTORICAL MODEL	LENGTH	WIDTH	HEIGHT	TERMINAL
SPR2073	SPR-2073	0.875 [22.22]	0.312 [7.94]	0.312 [7.94]	0.040 x 2.0 [1.02 x 50.80]
SPR2123	SPR-2123	0.875 [22.22]	0.375 [9.52]	0.344 [8.73]	
SPR2091	SPR-2091	1.875 [47.62]	0.375 [9.52]	0.344 [8.73]	

Consult our engineering department for specific part numbers and detailed data sheets, see email address at the bottom of this page.



MODEL
SPR1005

Special Purpose
Silicone Molded
SPR-1005-26 Qualified
To MIL-PRF-49465/1
Type RLV-10

STANDARD ELECTRICAL SPECIFICATIONS				
GLOBAL MODEL	HISTORICAL MODEL	WATTAGE	RESISTANCE RANGE (Ω)	TYPICAL TOL.
SPR1005	SPR-1005	5 (3)	0.0008 to 0.5	$\pm 1.0\%$

Note

(3) Limited to 25 A

DIMENSIONS in inches (millimeters)				
GLOBAL MODEL	HISTORICAL MODEL	LENGTH	DIAMETER	TERMINAL
SPR1005	SPR-1005	0.975 [24.77]	0.380 [9.65]	0.040 x 1.5 [1.02 x 38.10]

Consult our engineering department for specific part numbers and detailed data sheets, see email address at the bottom of this page.