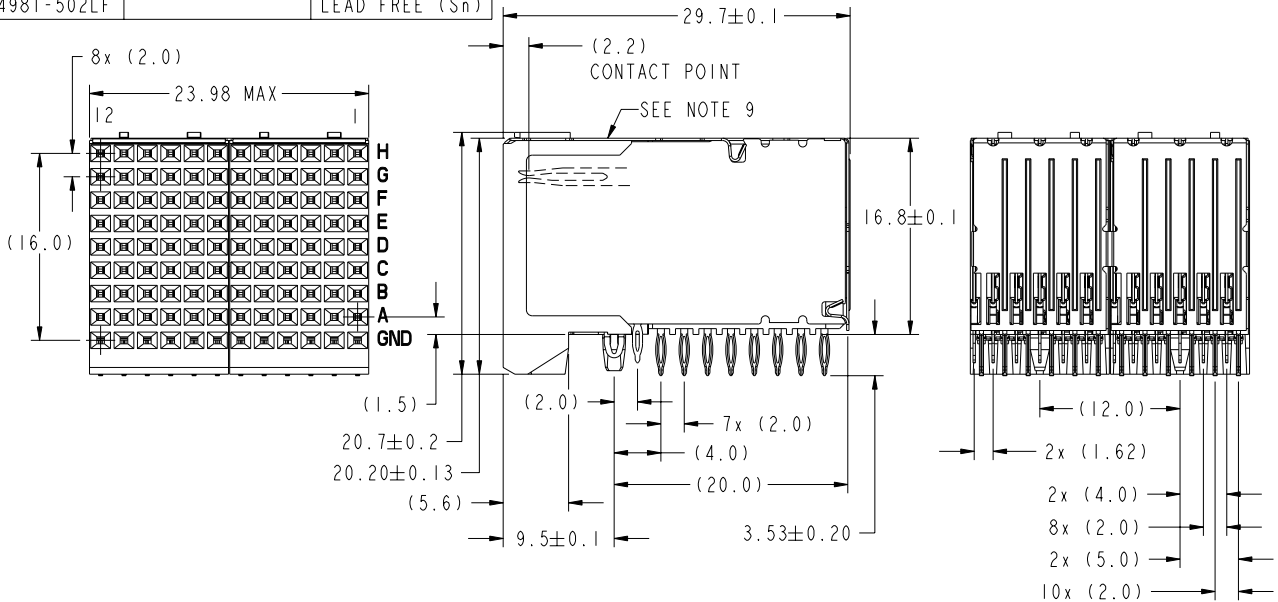




This document is the property of and embodies CONFIDENTIAL and PROPRIETARY information of FCI. No part of the information shown on this document may be used in any way or disclosed to others without the written consent of FCI. Copyright FCI.

PRODUCT NO.	CONTACT PLATING PERFORMANCE LEVEL	PRESS-FIT TAIL PLATING
74981-102	TELCORDIA CO	STANDARD (SnPb)
74981-102LF		LEAD FREE (Sn)
74981-302	CUSTOMER SPECIAL	STANDARD (SnPb)
74981-302LF		LEAD FREE (Sn)
74981-502	TELCORDIA UE	STANDARD (SnPb)
74981-502LF		LEAD FREE (Sn)



mat'l code				tolerances unless otherwise specified		CUSTOMER	FCI
SEE NOTE 2						COPY	www.fciconnect.com
ltr	ecm no.	dr	date	linear	0.X ± 0.3	projection	RIGHT ANGLE SIGNAL RECEPTACLE 8 ROW, 96 POSITION
P	V06-0544	DCH	2006-06-09		0.XX ± 0.10		
R	V07-0316	DCH	2007-04-25		0.XXX ± 0.050	MM	product family METRAL 1000 size dwg no
S	V07-0604	DCH	2007-09-18	angles	0° ± 2°		
T	V08-0078	HTB	2008-02-15	dr	S. KLINE 2000-03-09	scale	code
-	-	-	-	enr	M. HAHN 2000-03-09		
M	V04-0582	TAB	2004-06-11	chr	S. STONER 2000-08-24	2:1	213
N	V05-0192	DAI	2005-04-15	oppd	M. HAHN 2000-08-24		
sheet index	revision sheet	T	T	T	T		sheet 1 of 4

REV E - 2006-04-18

1 | 2

Pro/E

3 |

cage code 22526

4

PDM: Rev:T STATUS: Released Printed: May 13, 2011

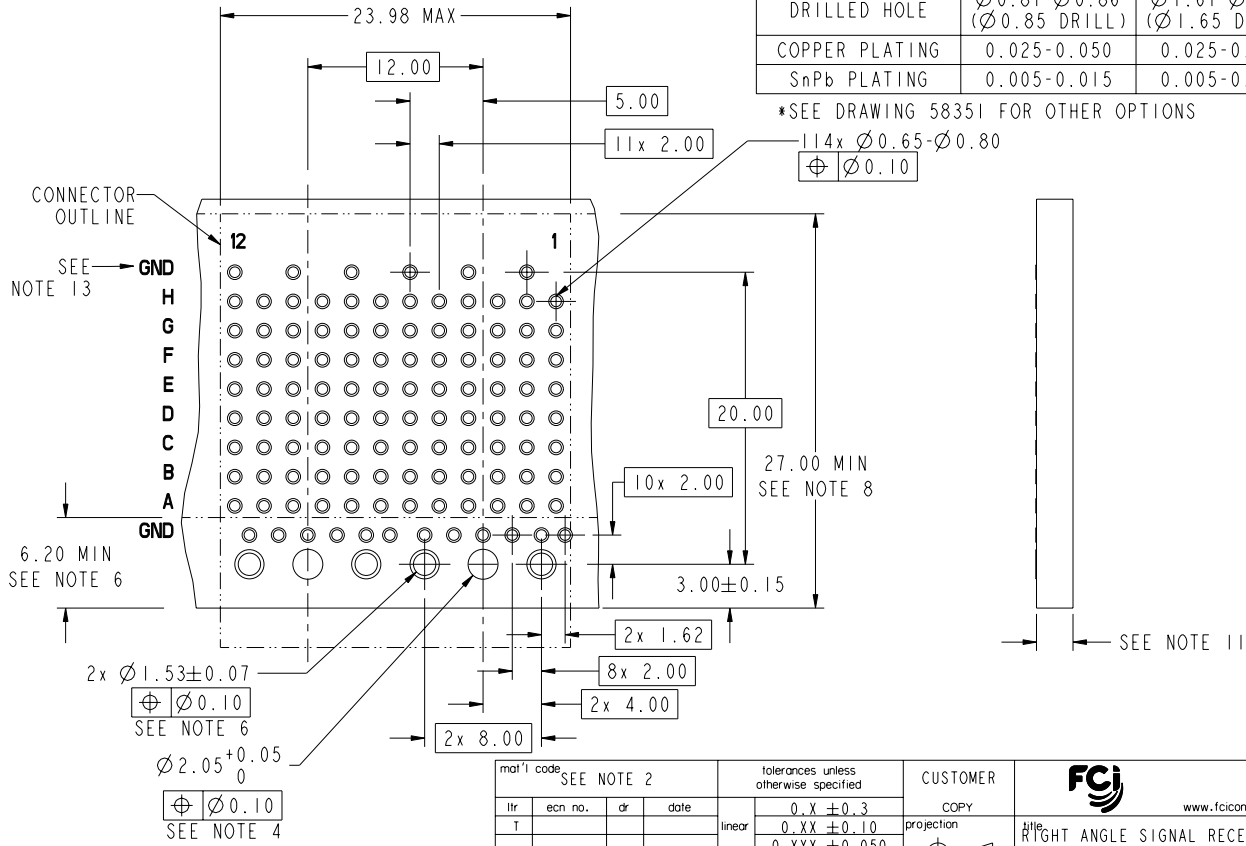


This document is the property of and embodies CONFIDENTIAL and PROPRIETARY information of FCJ. No part of the information shown on this document may be used in any way or disclosed to others without the written consent of FCJ. Copyright FCJ.

PRODUCT NUMBER
SEE SHEET 1

PRESS-FIT HOLES		
HOLE DIAMETER AFTER PLATING	$\varnothing 0.65 - \varnothing 0.80$ *	$\varnothing 1.53$
DRILLED HOLE	$\varnothing 0.81 - \varnothing 0.86$ ($\varnothing 0.85$ DRILL)	$\varnothing 1.61 - \varnothing 1.66$ ($\varnothing 1.65$ DRILL)
COPPER PLATING	0.025-0.050	0.025-0.050
SnPb PLATING	0.005-0.015	0.005-0.015

*SEE DRAWING 58351 FOR OTHER OPTIONS



RECOMMENDED PCB HOLE PATTERN-COMPONENT SIDE

mat'l code: SEE NOTE 2				tolerances unless otherwise specified		CUSTOMER		FCJ		www.fcjconnect.com	
litr	ecm no.	dr	date	linear	$0.X \pm 0.3$	projection	COPY	RIGHT ANGLE SIGNAL RECEPTACLE			
T				angles	$0.XXX \pm 0.10$			8 ROW, 96 POSITION			
				dr	$0.XXX \pm 0.050$	$0^\circ \pm 2^\circ$		product family	METRAL 1000	code	213
				enr	S. KLINE 2000-03-09			size	dwg no	74981	sheet
				chr	M. HAHN 2000-03-09		MM	scale	A	2	
				oppd	S. STONER 2000-08-24		1:1				
					M. HAHN 2000-08-24						
sheet index	revision sheet							code code	22526		

REV E - 2006-04-18

PDM: Rev:T STATUS: Released Printed: May 13, 2011

1 | 2

3 |

4

PRODUCT NUMBER
SEE SHEET 1

NOTES

- 1. UNLESS OTHERWISE SPECIFIED, ALL DIMENSIONS AND TOLERANCES ARE IN ACCORDANCE WITH ASME Y14.5M, 1994
- 2. HOUSING MATERIAL: LIQUID CRYSTAL POLYMER, GLASS FILLED FLAME RETARDANT PER UL94V-0
GROUND SHIELD MATERIAL: COPPER ALLOY
SIGNAL CONTACT MATERIAL: COPPER ALLOY
- 3. PLATING:
PRESS-FIT TAIL AREA: SnPb ON STANDARD
Sn ON LEAD FREE
MATING CONTACT POINTS: MEETS PERFORMANCE LEVEL SHOWN IN TABLE ON SHEET 1.
- 4. Ø2.05 HOLE IS UNPLATED.
- 5. Ø1.53 PLATED HOLES (2X) ARE FOR GROUNDS.
- 6. AVOID TRACES IN THIS AREA ON TOP OF PCB DUE TO EXPOSED GROUND SHIELD.
- 7. UNDERPLATING FOR SHIELD AND SIGNAL CONTACTS IS 1.3 µm Ni MIN.
- 8. COMPONENT KEEP OUT ZONE FOR PRESS BLOCK CLEARANCE.
- 9. PRODUCT MARKING: DATE AND LOT CODE.
- 10. SEE GS-20-018 FOR APPLICATION OF CONNECTOR TO PCB.
- 11. PCB THICKNESS RANGE: 1.3mm TO 3.4mm.
- 12. SEE PRODUCT SPECIFICATION GS-12-134 FOR PRODUCT PERFORMANCE CHARACTERISTICS.

- 13. THIS GROUND ROW OF VIA-HOLES ONLY REQUIRED FOR PREVIOUS REVISIONS OF THIS DESIGN WHERE THE TOP SHIELDS HAD EON PRESS-FIT. DUE TO INVENTORIES OF PREVIOUS VERSION, WE RECOMMEND THEY BE DESIGNED IN.
- 14. PRODUCTS WHERE THE PART NUMBER ENDS IN LF MEET EUROPEAN UNION DIRECTIVES AND OTHER COUNTRY REGULATIONS AS DESCRIBED IN GS-22-008.

ALL PRODUCTS WILL WITHSTAND EXPOSURE TO 260°C FOR 60 SECONDS IN A CONVECTION, INFRA-RED OR VAPOR PHASE REFLOW OVEN.



This document is the property of and embodies CONFIDENTIAL and PROPRIETARY information of FCI. No part of the information shown on this document may be used in any way or disclosed to others without the written consent of FCI. Copyright FCI.

mat'l code: SEE NOTE 2				tolerances unless otherwise specified		CUSTOMER		FCI www.fciconnect.com	
litr	ecm no.	dr	date	linear	0.X ±0.3	COPY		RIGHT ANGLE SIGNAL RECEPTACLE	
T					0.XX ±0.10	projection		8 ROW, 96 POSITION	
				angles	0.XXX ±0.050	MM		product family METRAL 1000	
				dr	0 ±2°	scale		code	
				enr		2:1		213	
				chr	S. KLING 2000-03-09	A		sheet	
				oppd	M. HAHN 2000-03-09			3	
					S. STONER 2000-08-24			74981	
					M. HAHN 2000-08-24			code	
sheet index	revision sheet							22526	

1 | 2

Pro/E

3 |

code code 22526

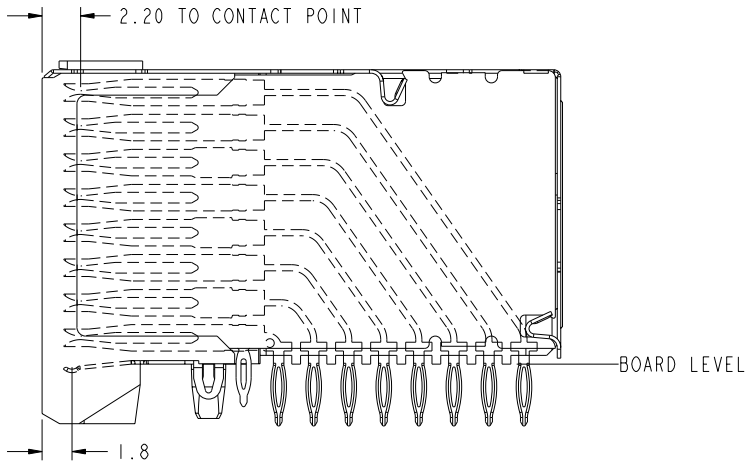
4

PDM: Rev:T STATUS: Released Printed: May 13, 2011

REV E - 2006-04-18

PRODUCT NUMBER
SEE SHEET 1

DISTANCE FROM CONTACT POINT TO BOARD	
CONTACT	DISTANCE
A	12.5
B	15.9
C	18.9
D	21.9
E	25.0
F	28.0
G	31.1
H	34.1



CONTACT POINT AND SKEW

mat'l code		SEE NOTE 2		tolerances unless otherwise specified		CUSTOMER		FCJ		www.fcjconnect.com	
lfr	ecm no.	dr	date	linear	0.X ±0.3	projection	COPY	RIGHT ANGLE SIGNAL RECEPTACLE			
					0.XX ±0.10			8 ROW, 96 POSITION			
				angles	0.XXX ±0.050			product family		code	
				dr	0° ±2°			METRAL 1000		213	
				enr				size	dwg no	sheet	
				chr	S. KLINE 2000-03-09			A	74981	4	
				oppd	M. HAHN 2000-03-09			scale			
					S. STONER 2000-08-24			3:1			
					M. HAHN 2000-08-24			cage code			
sheet index	revision sheet							22526			



This document is the property of and embodies CONFIDENTIAL and PROPRIETARY information of FCJ. No part of the information shown on this document may be used in any way or disclosed to others without the written consent of FCJ. Copyright FCJ.

REV E - 2006-04-18

PDM: Rev:T STATUS: Released Printed: May 13, 2011