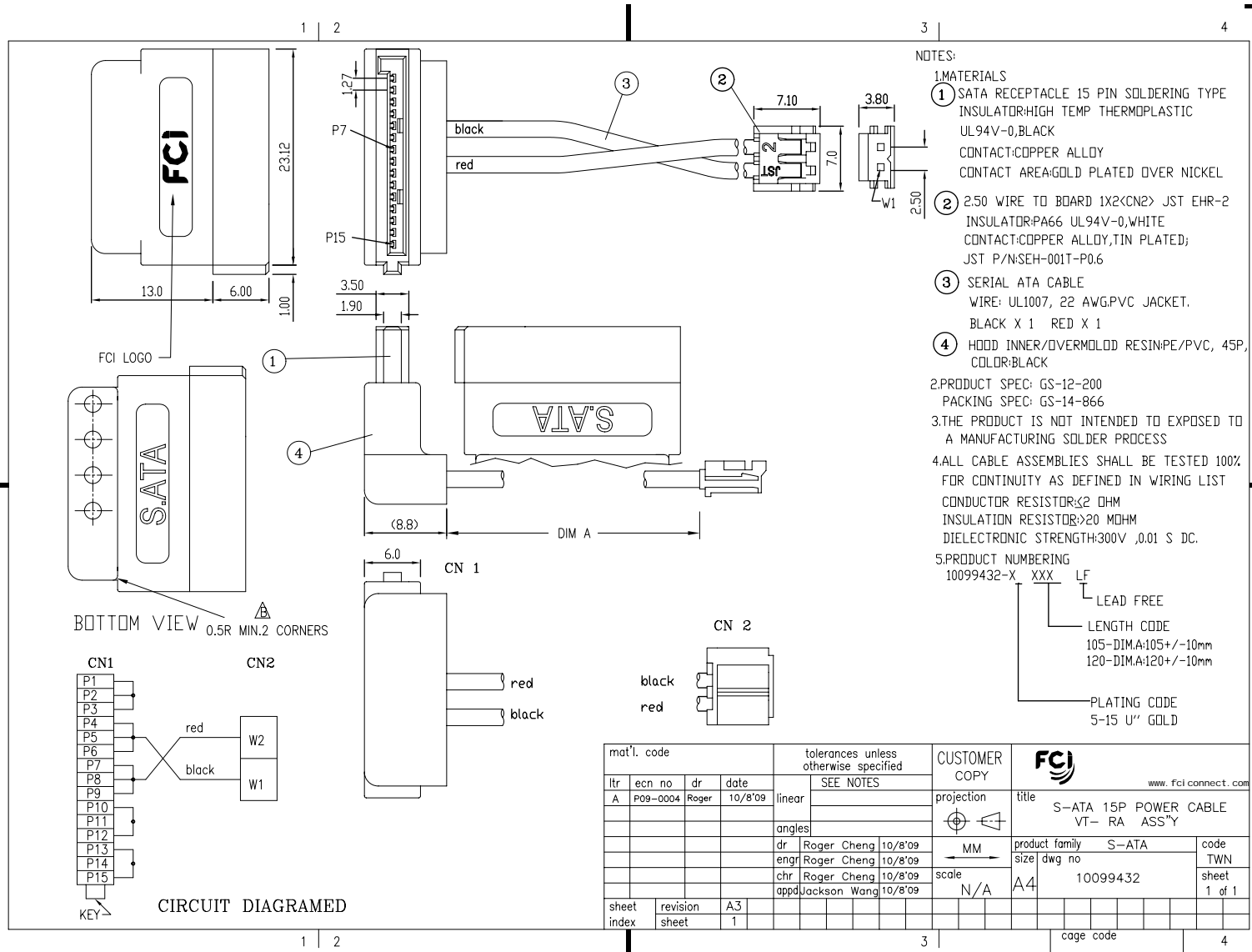
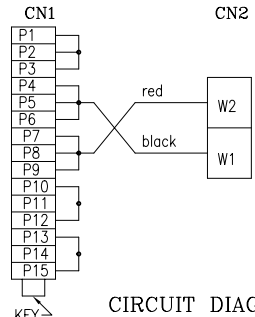


All rights strictly reserved. Reproduction or issue to third parties is not permitted without written authority from FCI. Property of FCI. Copyright FCI.



- NOTES:
1. MATERIALS
 - ① SATA RECEPTACLE 15 PIN SOLDERING TYPE INSULATOR: HIGH TEMP THERMOPLASTIC UL94V-0, BLACK CONTACT: COPPER ALLOY CONTACT AREA: GOLD PLATED OVER NICKEL
 - ② 2.50 WIRE TO BOARD 1X2<CN2> JST EHR-2 INSULATOR: PA66 UL94V-0, WHITE CONTACT: COPPER ALLOY, TIN PLATED; JST P/N: SEH-001T-P0.6
 - ③ SERIAL ATA CABLE WIRE: UL1007, 22 AWG, PVC JACKET. BLACK X 1 RED X 1
 - ④ HOOD INNER/OVERMOLDED RESIN: PE/PVC, 45P, COLOR: BLACK
 2. PRODUCT SPEC: GS-12-200
PACKING SPEC: GS-14-866
 3. THE PRODUCT IS NOT INTENDED TO BE EXPOSED TO A MANUFACTURING SOLDER PROCESS
 4. ALL CABLE ASSEMBLIES SHALL BE TESTED 100% FOR CONTINUITY AS DEFINED IN WIRING LIST
CONDUCTOR RESISTOR: ≤ 2 OHM
INSULATION RESISTOR: > 20 MOHM
DIELECTRIC STRENGTH: 300V, 0.01 S DC.
 5. PRODUCT NUMBERING
10099432-X XXX LF
 LEAD FREE
 LENGTH CODE
 105-DIM A: 105 +/- 10mm
 120-DIM A: 120 +/- 10mm
 PLATING CODE
 5-15 U" GOLD

BOTTOM VIEW 0.5R MIN. 2 CORNERS



CIRCUIT DIAGRAMED

mat'l. code				tolerances unless otherwise specified		CUSTOMER COPY		FCI	
lfr	ecn no	dr	date	SEE NOTES		projection		www.fci-connect.com	
A	P09-0004	Roger	10/8/09	linear		title		S-ATA 15P POWER CABLE	
				angles		VT- RA ASS'Y			
				dr	Roger Cheng 10/8/09	product family		S-ATA	
				enfr	Roger Cheng 10/8/09	size		dwg no	
				chr	Roger Cheng 10/8/09	scale		A4	
				appd	Jackson Wang 10/8/09	code		10099432	
sheet index	revision sheet	A3	1			TWN		sheet 1 of 1	

ACAD

PDM: Rev:A STATUS: Released Printed: Dec 21, 2009