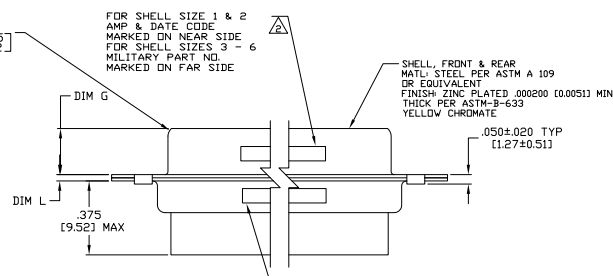
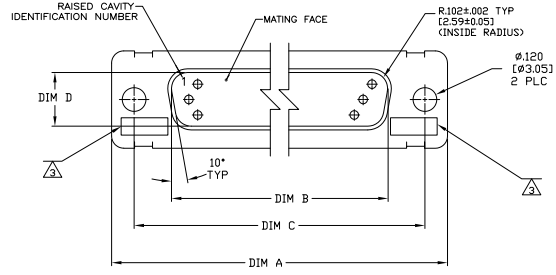
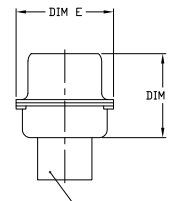
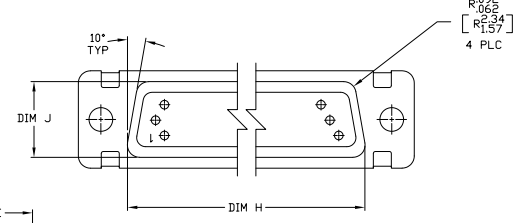


REV	DATE	DESCRIPTION	BY	CHK	APP
DF	DO				
FT	REVISED PER EDD-11-00030				



- THE CONNECTOR DESCRIBED IN THIS DOCUMENT WILL MATE WITH ANY RECEPTACLE CONNECTOR WITH THE SAME INSERT ARRANGEMENT.
- MARKED WITH .047-.062 (1.19-1.57) HIGH CHARACTERS. FAR SIDE REFERS TO THE WIDE SIDE OF THE KEYSTONE. NEAR SIDE REFERS TO THE NARROW SIDE OF THE KEYSTONE. WHEN SPACE IS LIMITED MARKING CAN BE SPLIT BETWEEN FRONT AND REAR SHELL.
- UL/CSA DESIGNATION MARKED IN THIS AREA.
- CONNECTOR ASSEMBLY WITHOUT CONTACTS, MFG'S P/N 204370-2. MUST BE ORDERED SEPARATELY.
- CONNECTOR ASSEMBLY SUPPLIED WITH CONTACTS, MFG'S P/N 204370-2. PACKAGED IN A SEPARATE CONTAINER. QTY = NO. OF POSN. (SEE TABLE).



VIEW Z-Z  
 SIZE .02 PIN CONTACT  
 MATERIAL: COPPER ALLOY PER MIL-C-39029 & MIL-DTL-24308.  
 PLATING: GOLD PER ASTM-B-488 (TYPEI) OVER NICKEL PER QQ-N-290.

FOR SHELL SIZE 1 & 2  
 AMP & DATE CODE  
 MARKED ON NEAR SIDE  
 FOR SHELL SIZES 3 - 6  
 MILITARY PART NO.  
 MARKED ON FAR SIDE

REMARKS	MILITARY P/N ON PACKAGE	MILITARY P/N ON CONNECTOR	MARKED MFG'S PART NUMBER	L	J	H	G	F	E	D	C	B	A	INSERT ARRANGEMENT	NO OF POS.	SHELL SIZE	PART NUMBER
	M24308/4-16	M24308/4-16	1-1757823-2	.049 (1.24)	.666 (15.99)	2.912 (58.72)	2.36 (5.99)	.436 (11.07)	.683 (17.35)	.508 (12.90)	2.505 (63.63)	2.217 (56.31)	2.744 (69.70)	MS14004-1	104	6	1-1757823-2
	M24308/4-15	M24308/4-15	1-1757823-1	.049 (1.24)	.666 (15.99)	2.912 (58.72)	2.36 (5.99)	.436 (11.07)	.683 (17.35)	.508 (12.90)	2.505 (63.63)	2.217 (56.31)	2.744 (69.70)	MS18277-2	78	5	1-1757823-1
	M24308/4-14	M24308/4-14	1-1757823-0	.049 (1.24)	.666 (15.99)	2.912 (58.72)	2.36 (5.99)	.436 (11.07)	.683 (17.35)	.508 (12.90)	2.505 (63.63)	2.217 (56.31)	2.744 (69.70)	MS18276-2	62	4	1-1757823-0
	M24308/4-13	M24308/4-13	1757823-9	.049 (1.24)	.666 (15.99)	2.912 (58.72)	2.36 (5.99)	.436 (11.07)	.683 (17.35)	.508 (12.90)	2.505 (63.63)	2.217 (56.31)	2.744 (69.70)	MS18275-2	44	3	1757823-9
	M24308/4-12	M24308/4-12	1757823-8	.049 (1.24)	.666 (15.99)	2.912 (58.72)	2.36 (5.99)	.436 (11.07)	.683 (17.35)	.508 (12.90)	2.505 (63.63)	2.217 (56.31)	2.744 (69.70)	MS18274-2	26	2	1757823-8
	M24308/4-11	M24308/4-11	1757823-7	.049 (1.24)	.666 (15.99)	2.912 (58.72)	2.36 (5.99)	.436 (11.07)	.683 (17.35)	.508 (12.90)	2.505 (63.63)	2.217 (56.31)	2.744 (69.70)	MS18273-2	15	1	1757823-7
	M24308/4-269	M24308/4-16	1-1757823-2	.049 (1.24)	.666 (15.99)	2.912 (58.72)	2.36 (5.99)	.436 (11.07)	.683 (17.35)	.508 (12.90)	2.505 (63.63)	2.217 (56.31)	2.744 (69.70)	MS14004-1	104	6	1757823-6
	M24308/4-268	M24308/4-15	1-1757823-1	.049 (1.24)	.666 (15.99)	2.912 (58.72)	2.36 (5.99)	.436 (11.07)	.683 (17.35)	.508 (12.90)	2.505 (63.63)	2.217 (56.31)	2.744 (69.70)	MS18277-2	78	5	1757823-5
	M24308/4-267	M24308/4-14	1-1757823-0	.049 (1.24)	.666 (15.99)	2.912 (58.72)	2.36 (5.99)	.436 (11.07)	.683 (17.35)	.508 (12.90)	2.505 (63.63)	2.217 (56.31)	2.744 (69.70)	MS18276-2	62	4	1757823-4
	M24308/4-266	M24308/4-13	1757823-9	.049 (1.24)	.666 (15.99)	2.912 (58.72)	2.36 (5.99)	.436 (11.07)	.683 (17.35)	.508 (12.90)	2.505 (63.63)	2.217 (56.31)	2.744 (69.70)	MS18275-2	44	3	1757823-3
	M24308/4-265	M24308/4-12	1757823-8	.049 (1.24)	.666 (15.99)	2.912 (58.72)	2.36 (5.99)	.436 (11.07)	.683 (17.35)	.508 (12.90)	2.505 (63.63)	2.217 (56.31)	2.744 (69.70)	MS18274-2	26	2	1757823-2
	M24308/4-264	M24308/4-11	1757823-7	.049 (1.24)	.666 (15.99)	2.912 (58.72)	2.36 (5.99)	.436 (11.07)	.683 (17.35)	.508 (12.90)	2.505 (63.63)	2.217 (56.31)	2.744 (69.70)	MS18273-2	15	1	1757823-1

THIS DRAWING IS A CONTROLLED DOCUMENT. (P) (C) (T) (M) (S) (R) (E) (L) (A) (I) (O) (N) (D) (S) (E) (C) (R) (I) (T) (I) (O) (N) (S)

DESIGNED BY: J. MILLER  
 CHECKED BY: J. MILLER  
 DATE: 04-20-00

AMPLITE PLUG ASSY, SIZE 1 THRU 6  
 SERIES 90 WITH ZINC PLATED SHELLS

SIZE: 00779 (G)=1757823  
 REVISED TO: 1

CUSTOMER DRAWING: 4.1