

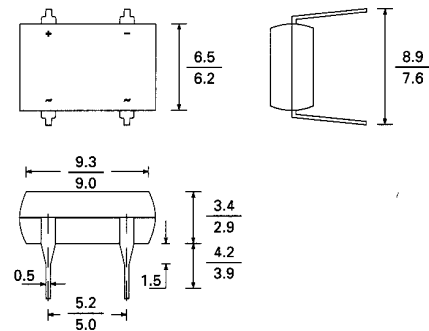
# DF 005M ...DF 10M MINIATURE GLASS PASSIVATED SINGLE - PHASE - BRIDGE RECTIFIER

## Features

- Plastic package used has Underwriters Laboratory Flammability Classification 94V-0
- Glass passivated chip junctions
- Surge overload rating of 50 Amperes peak
- Ideal for printed circuit boards
- High temperature soldering guaranteed: 260 °C/10 seconds at 5 lbs. (2.3 Kg) tension

## Case Style DFM

2 : 1



## Mechanical Rating

- Case: Molded plastic body over passivated junctions
- Terminals: Plated lead solderable per MIL-STD-750, Method 2026
- Polarity: polarity symbols marked on body
- Mounting Position: Any
- Weight: 0.04 ounce, 1.0 gram

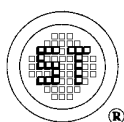
## Maximum Ratings and Electrical Characteristics

Ratings at 25 °C ambient temperature unless otherwise specified.

Characteristic	Symbol	DF	DF	DF	DF	DF	DF	DF	Unit
		005M	01M	02M	04M	06M	08M	10M	
Maximum repetitive peak reverse voltage	$V_{RRM}$	50	100	200	400	600	800	1000	volts
Maximum RMS voltage	$V_{RMS}$	35	70	140	280	420	560	700	volts
Maximum DC blocking voltage	$V_{DC}$	50	100	200	400	600	800	1000	volts
Maximum average forward output rectified current at $T_A=40\text{ }^\circ\text{C}$	$I_{(AV)}$	1.0							Amp
Peak forward surge current single sine-wave Suprimposed on rated load (JEDEC Method)	$I_{FSM}$	50.0							Amp
Rating for using ( $t<8.35\text{ms}$ )	$I^2t$	10.0							$\text{A}^2\text{SEC}$
Maximum instantaneous forward voltage drop per leg at 1.0A	$V_F$	1.1							Volts
Maximum reverse current at rated DC blocking voltage per leg	$I_R$	5.0							$\mu\text{A}$
		500.0							
Typical junction capacitance per leg (Note 1)	$C_J$	25.0							pF
Typical thermal resistance per leg (Note 2)	$R_{\theta JA}$	40.0							$^\circ\text{C/W}$
	$R_{\theta JL}$	15.0							
Operating junction and storage temperature range	$T_J, T_{STG}$	-55 to + 150							$^\circ\text{C}$

## NOTES:

- (1) Measured at 1.0 MHz and applied reverse voltage of 4.0 volts
- (2) Thermal resistance from junction to ambient and from junction to lead mounted on P.C.B. with 0.5X0.5" (13X13mm) copper pads



**SEMTECH ELECTRONICS LTD.**

( wholly owned subsidiary of HONEY TECHNOLOGY LTD. )



# DF 005M ...DF 10M

## MINIATURE GLASS PASSIVATED SINGLE - PHASE - BRIDGE RECTIFIER

FIG. 1-DERATING CURVE OUTPUT RECTIFIED CURRENT

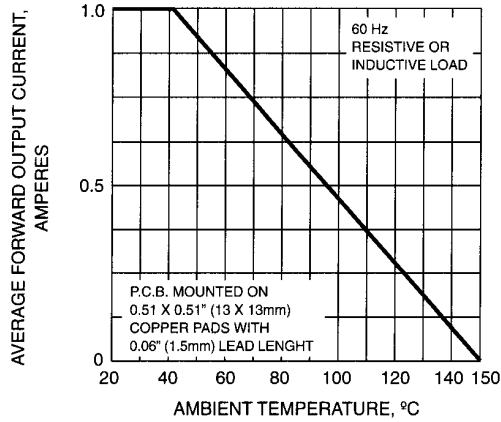


FIG. 2-MAXIMUM NON-REPETITIVE PEAK FORWARD SURGE CURRENT PER LEG

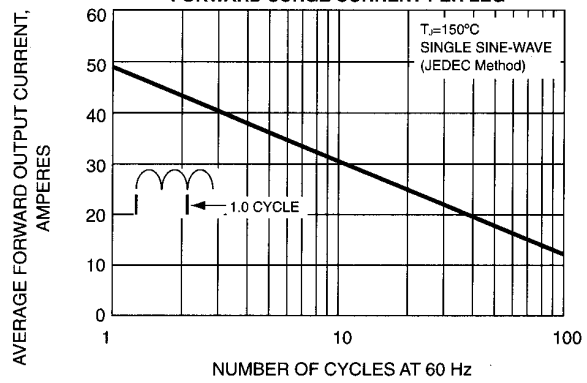


FIG. 3-TYPICAL FORWARD CHARACTERISTICS PER LEG

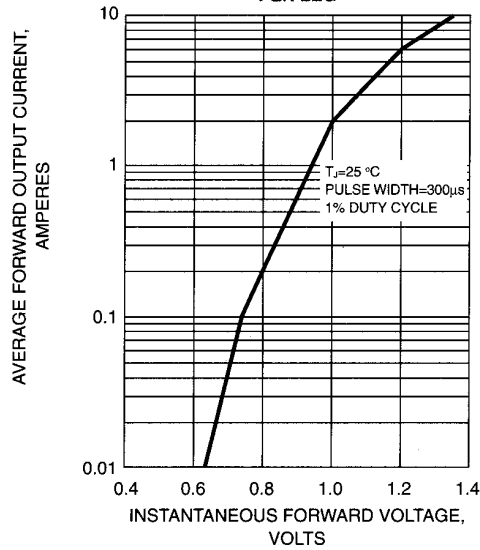


FIG. 4-TYPICAL REVERSE LEAKAGE CHARACTERISTICS PER LEG

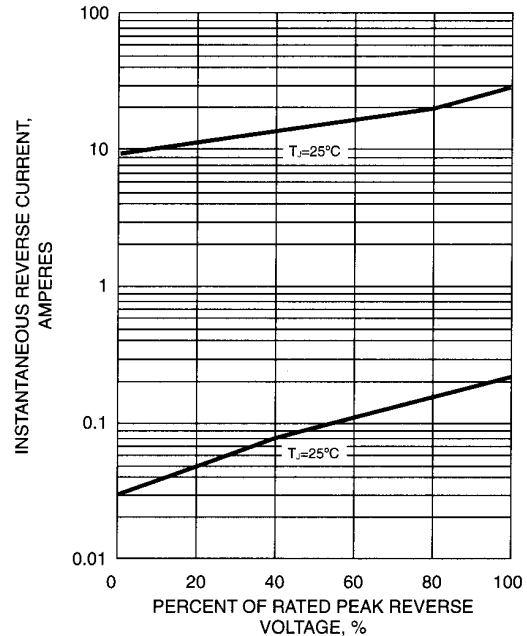


FIG. 5-TYPICAL JUNCTION CAPACITANCE PER LEG

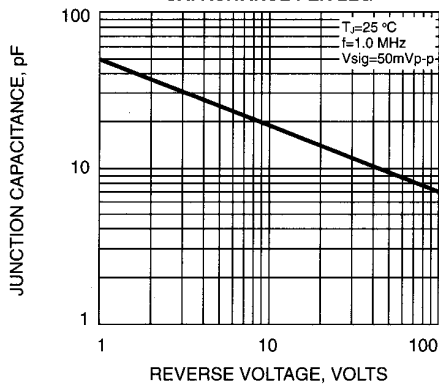
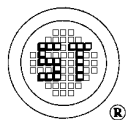
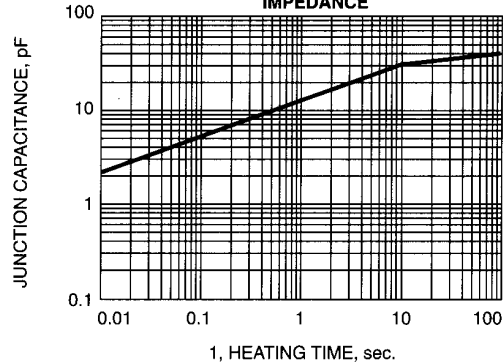


FIG. 6-TYPICAL TRANSIENT THERMAL IMPEDANCE



**SEMTECH ELECTRONICS LTD.**

( wholly owned subsidiary of HONEY TECHNOLOGY LTD. )

