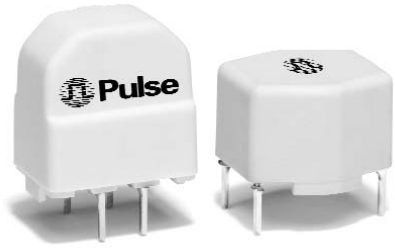






CURRENT COMPENSATED NOISE SUPPRESSION CHOKES

FE 2X Series - 2 Phase Common Mode Choke



-  Complies with VDE 565-2
-  Materials meet UL-94V0 requirements
-  Rated voltage: 250 Vac
-  Withstanding voltage: 1500 Vac

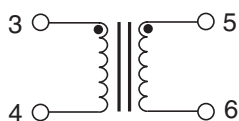
Electrical Specifications @ 25°C — Operating Temperature 0°C to 60°C

Part Number (Vertical)	Part Number (Horizontal)	L (mH ±30%)	Current (A)	DCR (Ω ±20%)	Resonance (kHz)
FE2X03-3-2	FE2X03-3-3	3.3	1.50	0.17	800
FE2X03-4-2	FE2X03-4-3	3.3	2.50	0.07	700
FE2X03-5-2	—	3.3	2.80	0.06	700
FE2X03-6-2	—	3.3	4.00	0.06	700
—	FE2X03-8-3	3.3	8.00	0.028	700
FE2X07-3-2	FE2X07-3-3	6.8	1.20	0.30	400
FE2X07-5-2	FE2X07-5-3	6.8	2.00	0.14	450
FE2X07-6-2	—	6.8	2.20	0.17	450
FE2X10-3-2	FE2X10-3-3	10	0.70	0.55	350
FE2X10-4-2	FE2X10-4-3	10	1.20	0.30	350
FE2X10-5-2	—	10	1.60	0.21	300
FE2X10-6-2	—	10	1.80	0.20	300
FE2X15-3-2	FE2X15-3-3	15	0.50	0.77	300
FE2X15-4-2	—	15	1.00	0.40	220
FE2X18-6-2	—	18	1.40	0.28	200
FE2X27-3-2	FE2X27-3-3	27	0.40	1.70	180
FE2X27-4-2	FE2X27-4-3	27	0.70	0.62	180
FE2X39-3-2	FE2X39-3-3	39	0.35	2.00	160
FE2X39-4-2	FE2X39-4-3	39	0.50	1.12	160
FE2X39-5-2	—	39	0.70	1.00	160
FE2X47-3-2	—	47	0.30	2.30	150
FE2X47-4-2	—	47	0.40	1.30	150

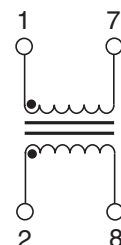
NOTE: Part Numbering System: FEXLV-S-P, where LV is the inductance value, S is the size code, and P is package style (2 = vertical and 3 = horizontal)

Schematics

Style 2 - Vertical Package



Style 3 - Horizontal Package



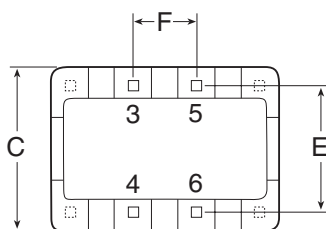
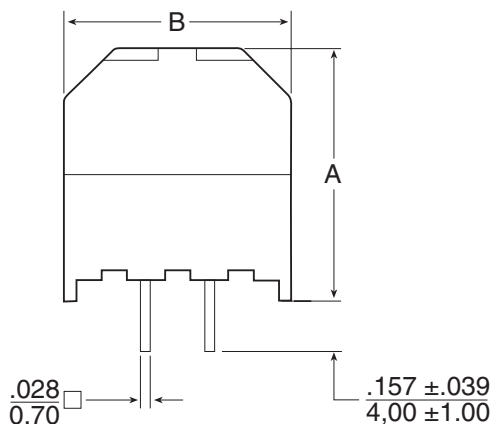
CURRENT COMPENSATED NOISE SUPPRESSION CHOKES

FE 2X Series - 2 Phase Common Mode Choke



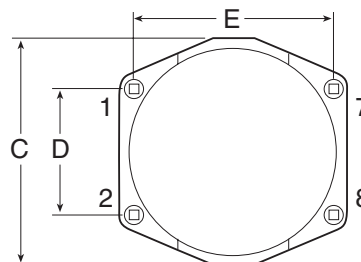
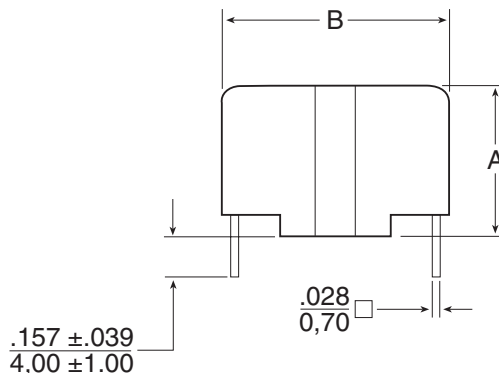
Mechanicals

Style 2 - Vertical Package



PINS VIEW

Style 3 - Horizontal Package



PINS VIEW

Dimensions: Inches
mm

Size Code	A MAX	B MAX	C MAX	E	F
3	.803 20,40	.724 18,40	.528 13,40	.394 10,00	.197 5,00
4	1.000 25,40	.921 23,40	.626 15,90	.492 12,50	.394 10,00
5	1.197 30,40	1.079 27,40	.724 18,40	.591 15,00	.492 12,50
6	1.394 35,40	1.276 32,40	.724 18,40	.591 15,00	.492 12,50

NOTE: Tolerances for E & F are ±.010 / 0,25

Size Code	A MAX	B MAX	C MAX	D	E
3	.508 12,90	.705 17,90	.705 17,90	.394 10,00	.591 15,00
4	.606 15,40	.902 22,90	.902 22,90	.492 12,50	.787 20,00
5	.705 17,90	1.098 27,90	1.098 27,90	.591 15,00	.984 25,00
8	1.000 25,40	1.709 43,40	1.669 42,40	.591 15,00	1.575 40,00

NOTE: Tolerances for D & E are ±.010 / 0,25

For More Information:

Pulse Worldwide Headquarters

12220 World Trade Drive
San Diego, CA 92128
U.S.A.
www.pulseeng.com
TEL: 858 674 8100
FAX: 858 674 8262

Pulse Northern Europe

3 Huxley Road
Surrey Research Park
Guildford, Surrey GU2 5RE
United Kingdom
TEL: 44 1483 401700
FAX: 44 1483 401701

Pulse Southern Europe

Zone Industrielle
F-39270
Orgelet
France
TEL: 33 3 84 35 04 04
FAX: 33 3 84 25 46 41

Pulse China Headquarters

No. 1
Industrial District
Changan, Dongguan
China
TEL: 86 769 5538070
FAX: 86 769 5538870

Pulse North China

Room 1002
No. 819
Nanjing West Rd
Shanghai
China
TEL: 86 21 32181071
FAX: 86 21 32181396

Pulse South Asia

150 Kampong Ampat
#07-01/02
KA Centre
Singapore 368324
TEL: 65 6287 8998
FAX: 65 6280 0080

Pulse North Asia

3F-4, No. 81, Sec. 1
Hsin Tai Wu Road
Hsi-Chih
Taipei Hsien
Taiwan
TEL: 886 2 26980228
FAX: 886 2 26980948

Performance warranty of products offered on this data sheet is limited to the parameters specified. Data is subject to change without notice. Other brand and product names mentioned herein may be trademarks or registered trademarks of their respective owners.
© Copyright, 2005. Pulse Engineering, Inc. All rights reserved.