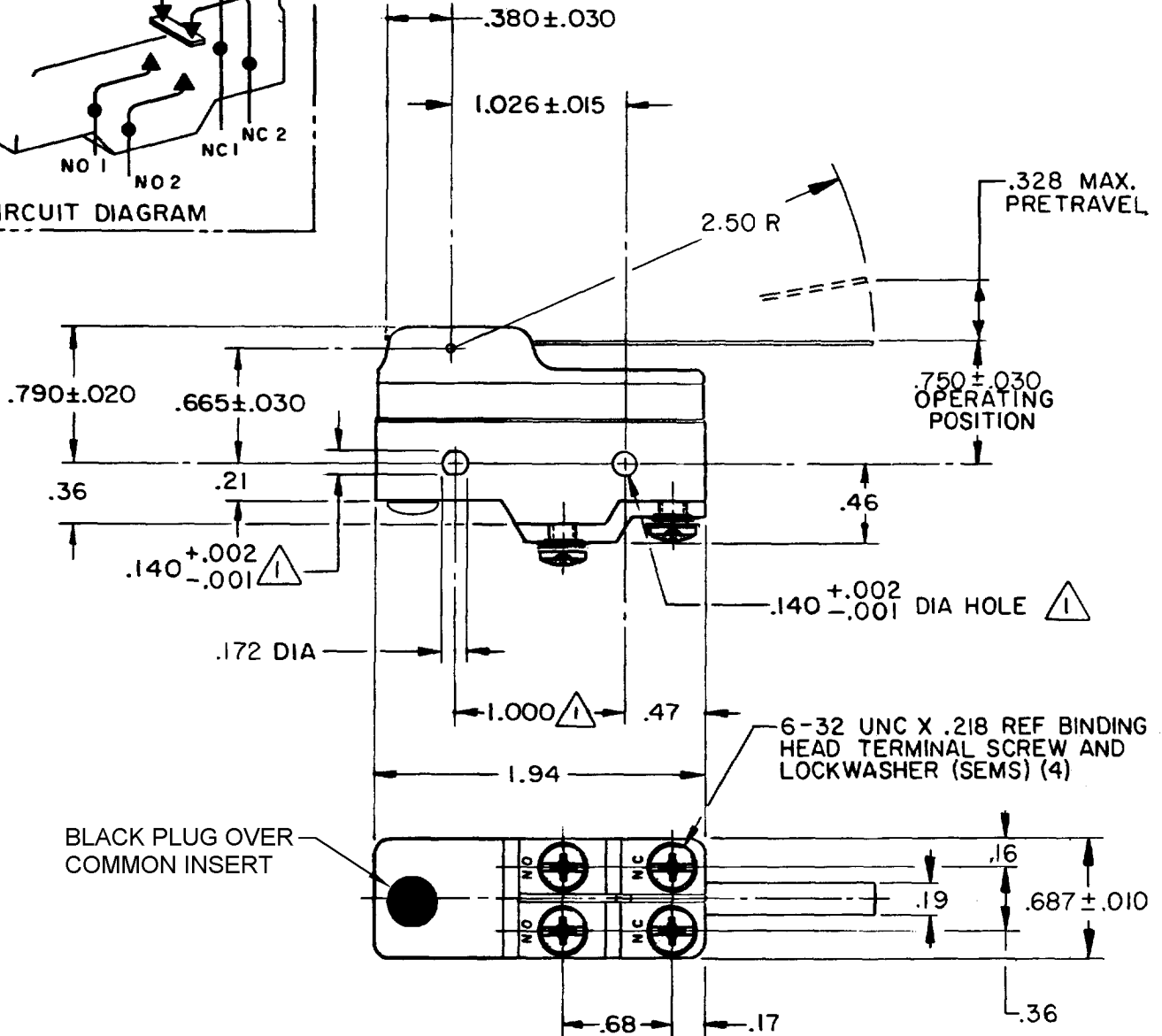
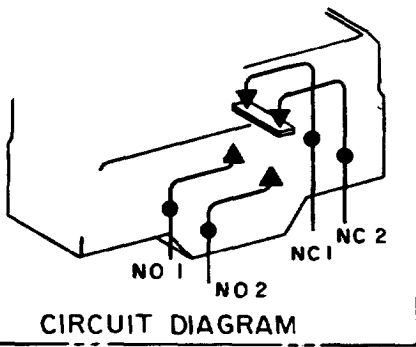


MICRO SWITCH

FREEPORT ILLINOIS, U.S.A
A DIVISION OF HONEYWELL
FED. MFG. CODE 91929

SWITCH-BASIC

BZ-2AW842444T

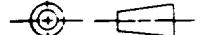


NOTES

- 1 MOUNTING HOLES WILL ACCEPT PINS OR SCREWS OF .139 MAX DIA ON 1.000 ± .002 CENTERS
- 2 - SUITABLE ONLY FOR APPLICATIONS IMPARTING A RAPID STROKE TO THE SWITCH PLUNGER
- 3 - SWITCH IS SUITABLE FOR 400°F USE. NB-SWITCH CHARACTERISTICS MAY SHIFT AT ELEVATED TEMPERATURE

THIS DRAWING COVERS A PROPRIETARY ITEM AND IS THE PROPERTY OF MICRO SWITCH, A DIVISION OF HONEYWELL. THIS DRAWING IS NOT TO BE COPIED OR USED WITHOUT THE APPROVAL OF MICRO SWITCH.

THIRD ANGLE PROJECTION



CHARACTERISTICS

OPERATING FORCE ----- 2 OZ MAX
RELEASE FORCE ----- 1/8 OZ MIN
DIFFERENTIAL TRAVEL ----- .020-.100
OVERTRAVEL ----- .219 MIN

ELECTRICAL DATA

CONTACT ARRANGEMENT
(SEE CIRCUIT DIAGRAM)

L73

15A 125, 250 OR 480 VAC
1A 125 VDC, 0.5A 250 VDC
1/4 HP 125 VAC, 1/2 HP 250 VAC



SCALE FULL

DO NOT SCALE PRINT

TOLERANCES

APPLY TO DESIGN UNITS. CONVERSIONS ARE ONLY FOR REFERENCE. UNLESS NOTED TOLERANCES ARE 1

| DIM. | TOL. | DIM. | TOL. |
|--------------|---------|-----------|---------|
| in | mm | in | mm |
| NO PLACES | X | 1/64 | |
| ONE PLACE | X,X | 0.4/0.16 | X X |
| TWO PLACES | X,X,X | 0.15/0.06 | X X X |
| THREE PLACES | X,X,X,X | | X X X X |
| ANGLES | | | |

DESIGN UNITS SI METRIC US CUSTOMARY

WEIGHT

CATALOG LISTING
BZ-2AW842444T
PAGE 1 OF 1

M

DRAWING NUMBER

5

ISSUE

REPLACES X81315-BZ

RELEASE NO. PR-13865

CHECK

REVISIONS

| | | | |
|---|------------|-------|-----------|
| A | 0063563 | J A P | 11 AUG 88 |
| B | 0065010 | | |
| T | | J A | 31 JUL 89 |
| C | CO-69351-D | JWB | 18 JUL 91 |
| D | 207512 | | |
| | | CSL | 24 FEB 03 |

CHECK

15 MAY 85

CHECK

15 MAY 85

CHECK

15 MAY 85

CHECK

15 MAY 85

CHECK

15 MAY 85

CHECK

15 MAY 85

CHECK

15 MAY 85

CHECK

15 MAY 85

CHECK

15 MAY 85

CHECK

15 MAY 85

CHECK

15 MAY 85

RASTER

FO-52848-A

DRAWN

T S K

6

CHECK

15 MAY 85

CHECK