



Ulti-Mate™

Commercial

Micro-D



FEATURES AND SPECIFICATIONS

Features and Benefits

- Economical solution for commercial applications requiring the density of a microminiature connector
- Rugged commercial design with a metal interface and grounding tabs for improved mechanical and electrical shield conditions

Reference Information

UL File No: E81982

Electrical

Current: 3.0A
Contact Resistance: 8mΩ max.

Mechanical

Contact Insertion Force: 3 oz. avg.
Unmating Force: 0.5 oz. min.

Physical

Housing: Shell — Nickel-plated 1008LC Steel
Insulator — LCP, UL 94V-0
Contact: Pin — Gold-plated Beryllium Copper
Jackpost: Stainless Steel
Temperature: -55 to +125°C



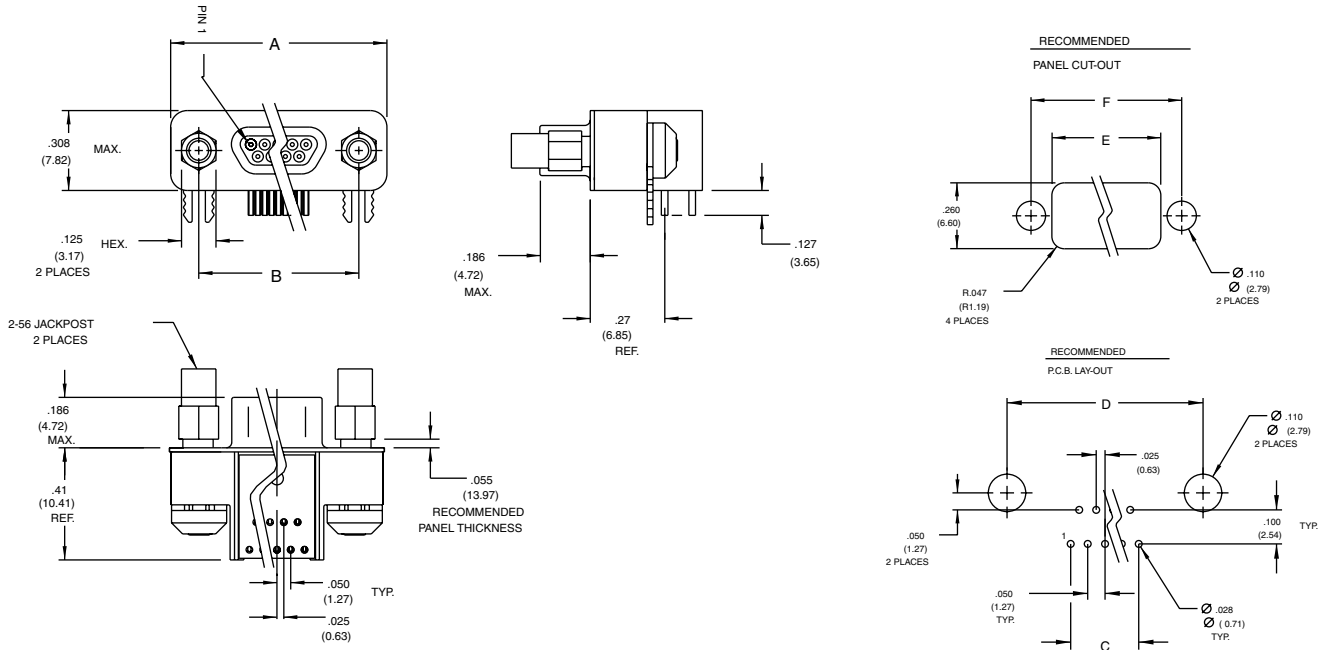
1.27mm (.050") Pitch Commercial Micro-D Plug

83611/83612/83614

Right Angle

Note: Designed to meet the requirements of SSA applications

CATALOG DRAWING (FOR REFERENCE ONLY)



ORDERING INFORMATION AND DIMENSIONS

Circuits	Order No.	Dimension					
		A Max.	B Nom.	C Ref.	D Nom.	E Ref.	F Nom.
9	83611-9006	19.93 (.785)	14.35 (.565)	5.08 (.200)	14.35 (.565)	10.41 (.410)	14.35 (.565)
15	83612-9020	23.75 (.935)	18.16 (.715)	8.88 (.350)	18.16 (.715)	11.68 (.460)	18.16 (.715)
25	83614-9012	30.10 (1.185)	24.51 (.965)	15.23 (.600)	24.51 (.965)	20.57 (.810)	24.51 (.965)

Note: Contact Molex for alternate hardware configurations (i.e. cable mount, solder cup or special hardware).

Contact Molex for material performance specifications.

1.60mm (.063") Jackpost optional for SSA applications. Contact Molex for order number.

FEATURES AND SPECIFICATIONS

Features and Benefits

- Economical solution for commercial applications requiring the density of a microminiature connector
- Rugged commercial design with a metal interface and grounding tabs for improved mechanical and electrical shield conditions

Reference Information

UL File No: E81982

Electrical

Current: 3.0A
Contact Resistance: 8mΩ max.

Mechanical

Contact Insertion Force: 3 oz. avg.
Unmating Force: 0.5 oz. min.

Physical

Housing: Shell — Nickel-plated 1008LC Steel
Insulator — LCP, UL 94V-0
Contact: Pin — Gold-plated Beryllium Copper
Jackpost: Stainless Steel
Temperature: -55 to +125°C



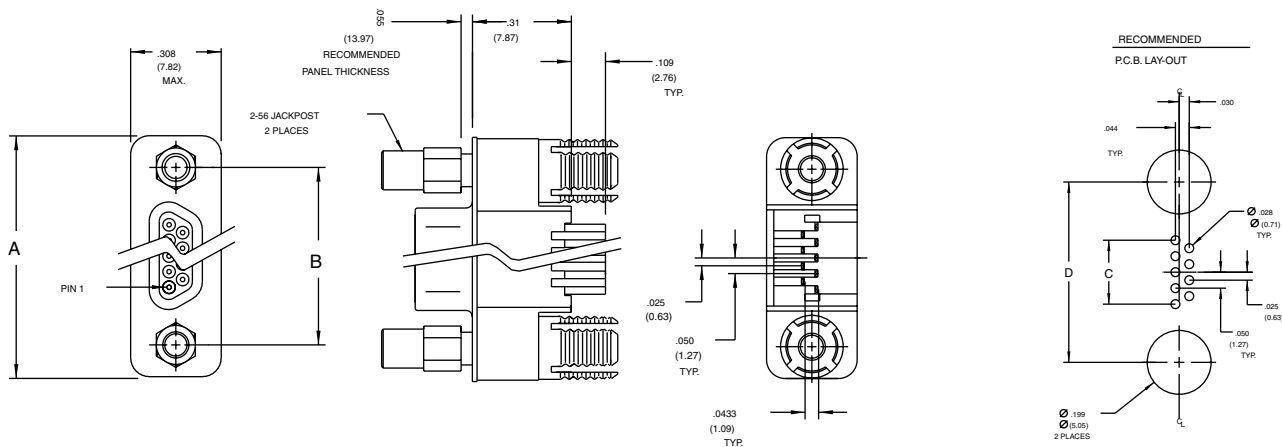
1.27mm (.050") Pitch Commercial Micro-D Plug

83611/83612/83614

Vertical

Note: Designed to meet the requirements of SSA applications

CATALOG DRAWING (FOR REFERENCE ONLY)



ORDERING INFORMATION AND DIMENSIONS

Circuits	Order No.	Dimension					
		A Max.	B Nom.	C Ref.	D Nom.	E Ref.	F Nom.
9	83611-9023	19.93 (.785)	14.35 (.565)	5.08 (.200)	14.35 (.565)	10.41 (.410)	14.35 (.565)
15	83612-9024	23.75 (.935)	18.16 (.715)	8.88 (.350)	18.16 (.715)	11.68 (.460)	18.16 (.715)
25	83614-9016	30.10 (1.185)	24.51 (.965)	15.23 (.600)	24.51 (.965)	20.57 (.810)	24.51 (.965)

Note: Contact Molex for alternate hardware configurations (i.e. cable mount, solder cup or special hardware).

Contact Molex for material performance specifications.

1.60mm (.063") Jackpost optional for SSA applications. Contact Molex for order number.

FEATURES AND SPECIFICATIONS

Features and Benefits

- Economical solution for commercial applications requiring the density of a microminiature connector
- Rugged commercial design with a metal interface and grounding tabs for improved mechanical and electrical shield conditions

Reference Information

UL File No: E81982

Electrical

Current: 3.0A
Contact Resistance: 8mΩ max.

Mechanical

Contact Insertion Force: 3 oz. avg.
Unmating Force: 0.5 oz. min.

Physical

Housing: Shell—Nickel-plated 1008LC Steel
Insulator—LCP, UL 94V-0
Contact: Pin—Gold-plated Beryllium Copper
Jackpost: Stainless Steel
Temperature: -55 to +125°C



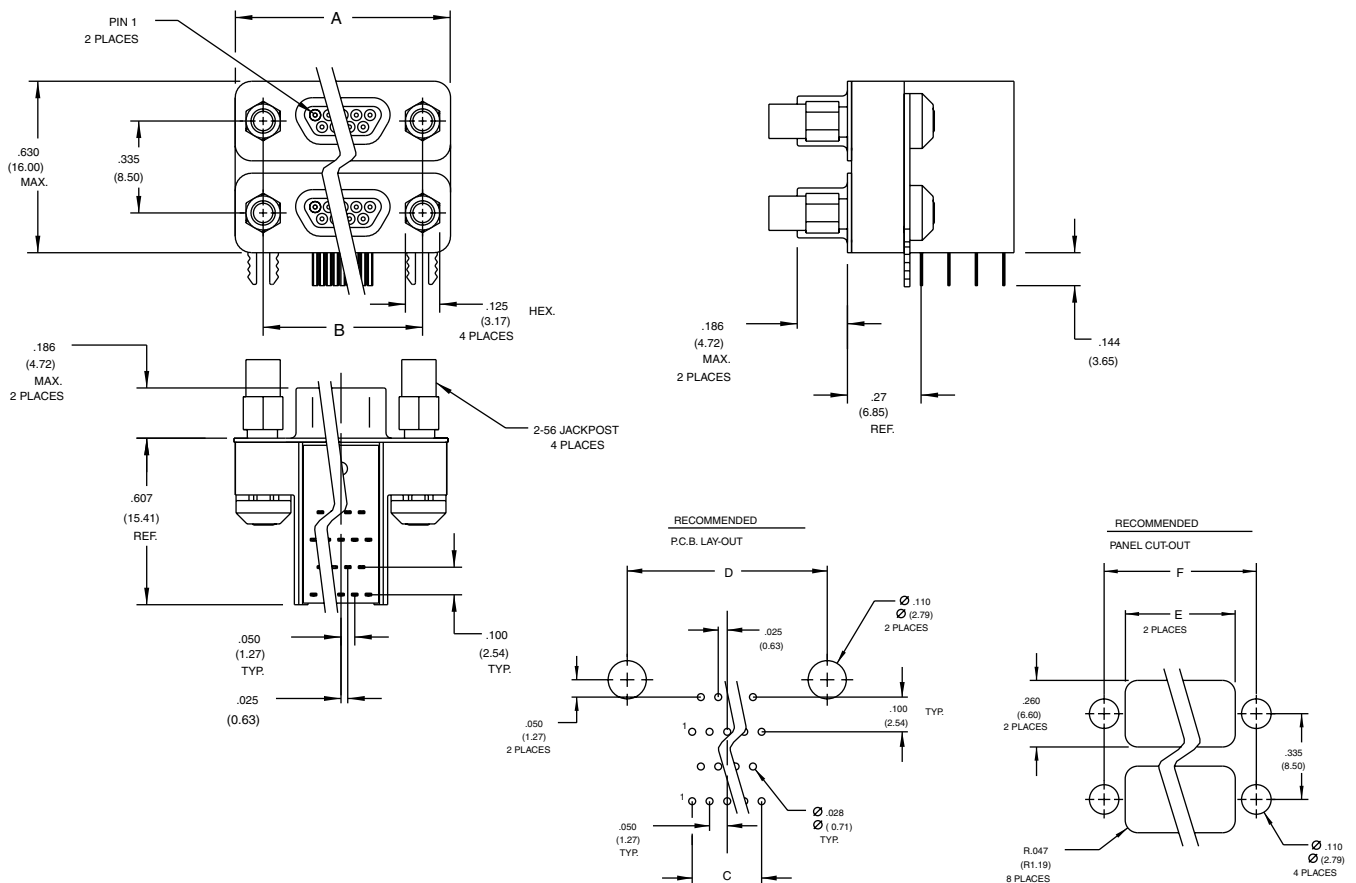
1.27mm (.050") Pitch Commercial Micro-D Plug

83619

Right Angle, Dual Stack

Note: Designed to meet the requirements of SSA applications

CATALOG DRAWING (FOR REFERENCE ONLY)



ORDERING INFORMATION AND DIMENSIONS

Circuits	Order No.	Dimension					
		A Max.	B Nom.	C Ref.	D Nom.	E Ref.	F Nom.
9	83619-9003	19.93 (.785)	14.35 (.565)	5.08 (.200)	14.35 (.565)	10.41 (.410)	14.35 (.565)
15	83619-9010	23.75 (.935)	18.16 (.715)	8.88 (.350)	18.16 (.715)	11.68 (.460)	18.16 (.715)
25	83619-9011	30.10 (1.185)	24.51 (.965)	15.23 (.600)	24.51 (.965)	20.57 (.810)	24.51 (.965)

Note: Contact Molex for vertical configuration or for alternate hardware configurations (i.e. cable mount, solder cup or special hardware).

Contact Molex for material performance specifications.

1.60mm (.063") Jackpost optional for SSA applications. Contact Molex for order number.

FEATURES AND SPECIFICATIONS

Features and Benefits

- Economical solution for commercial applications requiring the density of a microminiature connector
- "Crimp and poke" configuration designed for hand or semi-automatic crimping

Reference Information

UL File No: E81982

Electrical

Current: 3.0A
Contact Resistance: 8mΩ max.

Mechanical

Contact Insertion Force: 3 oz. avg.
Unmating Force: 0.5 oz. min.

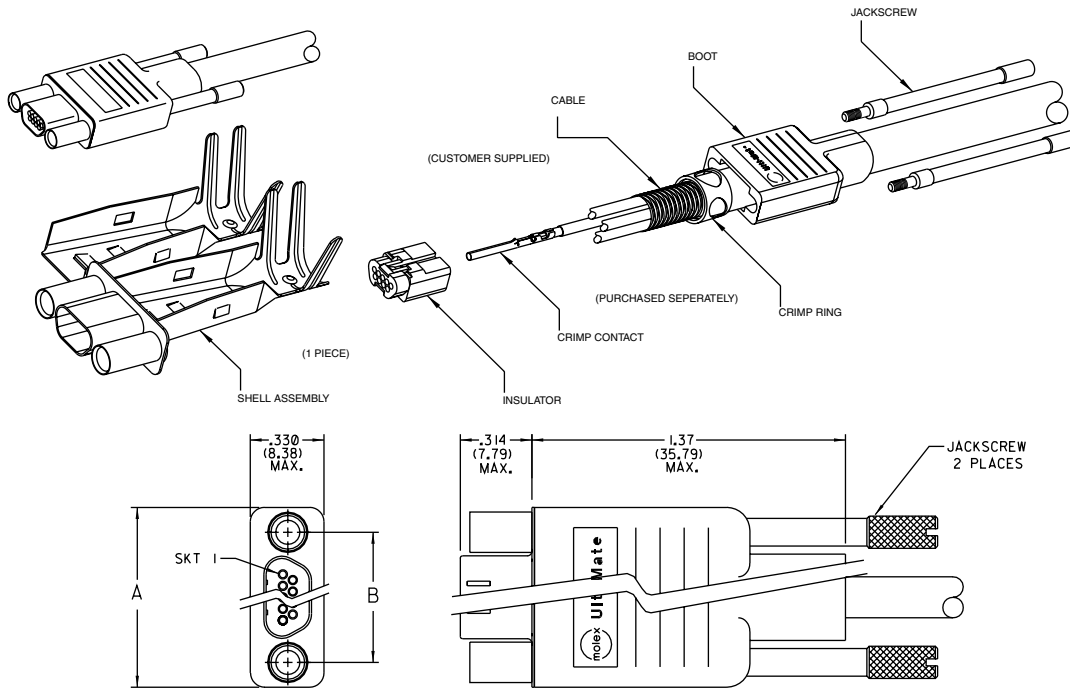
Physical

Housing: Shell — Nickel-plated 1008LC Steel
Insulator — LCP, UL 94V-0
Contact: Socket — Gold-plated Copper Alloy
Boot: Santoprene
Jackscrew: Stainless Steel

molex® 1.27mm (.050") Pitch Commercial Micro-D Cable Receptacle

83421/83422/83424

Kit



Note: Contact Molex for alternate hardware configurations (i.e. cable mount, solder cup or special hardware).

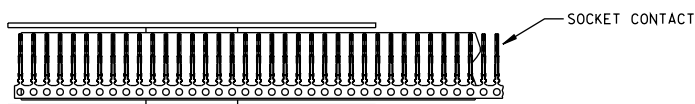
Contact Molex for material performance specifications.

1.60mm (.063") Jackpost optional for SSA applications. Contact Molex for order number.

Designed to meet the requirements of SSA applications.

ORDERING INFORMATION AND DIMENSIONS

Circuits	Order No.	Dimension	
		A Max.	B Nom.
9	83421-9014	19.93 (.785)	14.35 (.565)
15	83422-9014	23.75 (.935)	18.16 (.715)
25	83424-9014	30.10 (1.185)	24.51 (.965)



Terminals

83000*

Description	Order No.
2,500 Piece Reel	83000-9502
50,000 Piece Reel	83000-9503
Loose	83000-0083

* Use with 83421/83422/83424

FEATURES AND SPECIFICATIONS

Features and Benefits

- Economical solution for commercial applications requiring the density of a microminiature connector
- "Crimp and poke" configuration designed for hand or semi-automatic crimping

Reference Information

UL File No: E81982

Electrical

Current: 3.0A
Contact Resistance: 8mΩ max.

Mechanical

Contact Insertion Force: 3 oz. avg.
Unmating Force: 0.5 oz. min.

Physical

Housing: Shell — Nickel-plated 1008LC Steel
Insulator — LCP, UL 94V-0
Contact: Socket — Gold-plated Copper Alloy
Boot: Santoprene
Jackpost: Stainless Steel



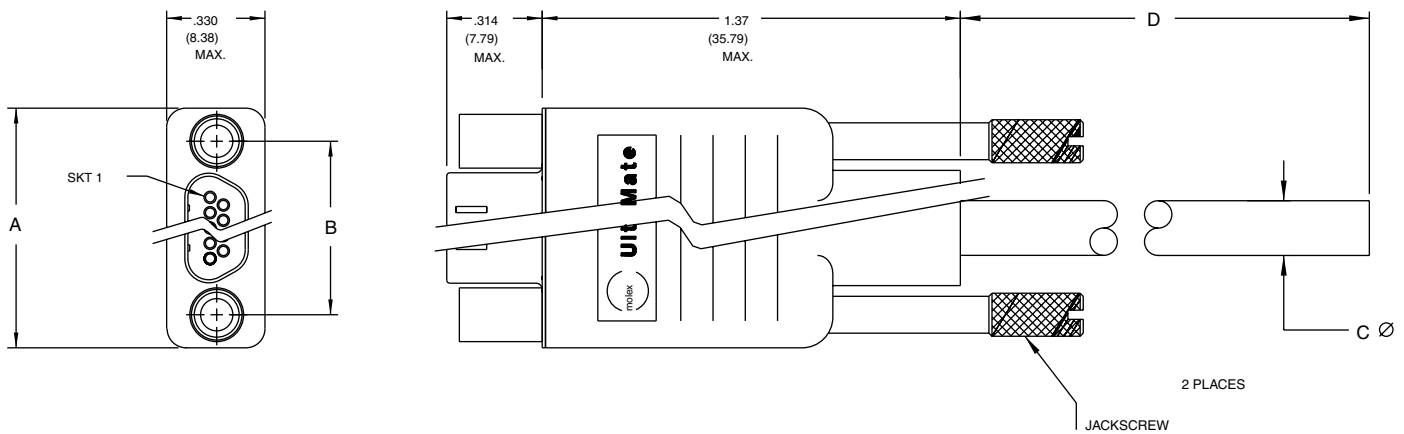
1.27mm (.050") Pitch Commercial Micro-D Cable Receptacle

83421/83422/83424

Assembled

Note: Designed to meet the requirements of SSA applications

CATALOG DRAWING (FOR REFERENCE ONLY)



ORDERING INFORMATION AND DIMENSIONS

Circuits	Dimension					
	Order No.			A Max.	B Nom.	C Nom.
	D=18"±.1"	D=36"±.1"	D=72"±.1"			
9	83421-9042	83421-9043	83421-9044	19.93 (.785)	14.35 (.565)	5.80 (.228)
15	83422-9007	83422-9013	83422-9018	23.75 (.935)	18.16 (.715)	6.43 (.253)
25	83424-9019	83424-9020	83424-9021	30.10 (1.185)	24.51 (.965)	7.72 (.304)

Note: Contact Molex for alternate hardware configurations (i.e. cable mount, solder cup or special hardware).

Contact Molex for material performance specifications.

1.60mm (.063") Jackpost optional for SSA applications. Contact Molex for order number.

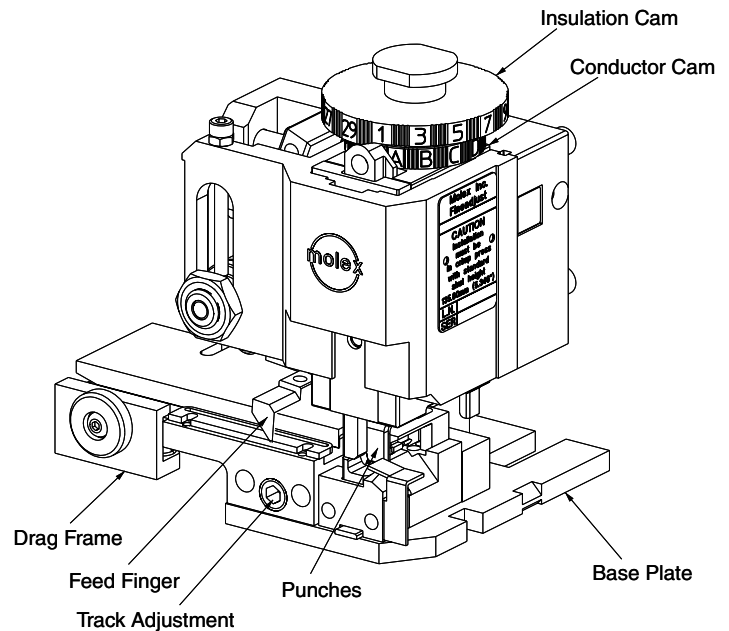
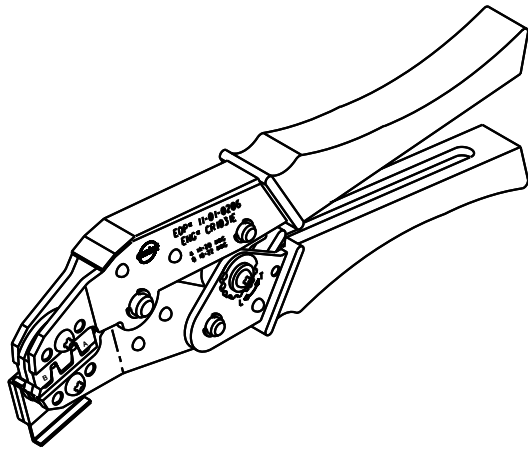
Cable = 28 AWG-PVC Jacket - shielded -80° - 300V - UL 2464

ORDERING INFORMATION

Description	Order No.	Product No.
Hand Tool	63811-1400	83000
FineAdjust Applicator	63820-7800	83000



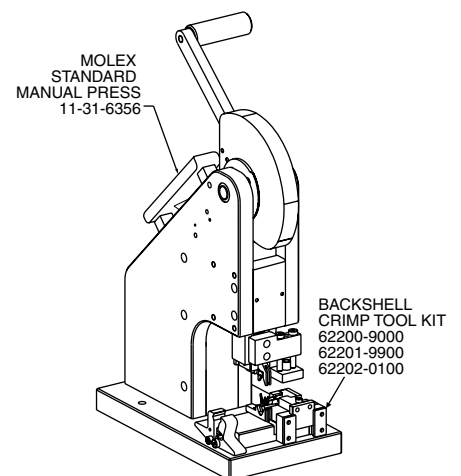
Application Tooling Commercial Micro-D Crimp Tooling for Contact



ORDERING INFORMATION

Description	Circuits	Order No.	Product No.
Hand Tool	9	62100-0900	83421
Hand Tool	15	62100-4100	83442
Hand Tool	25	62100-4200	83424
Press and Tool Kit	9	62200-8900	83421
Press and Tool Kit	15	62201-9800	83442
Press and Tool Kit	25	62202-0000	83424
Tool Kit Only	9	62200-9000	83421
Tool Kit Only	15	62201-9900	83442
Tool Kit Only	25	62202-0100	83424
Press Only	All	11-31-6356	All

Commercial Micro-D Strain Relief Crimp Tooling





Now, the Most Reliable
Commercial Micro-D Takes the
Kinks Out of Your Time Line.



Been waiting too long for commercial Micro-D connectors? Molex can get it there where and when you need it — with absolutely no compromise in quality. Our precision-engineered, microminiature interconnects are the perfect choice whenever you need high contact density, reduced size and weight, plus rugged long-term performance, all at a competitive cost.

From computer and peripheral devices, to medical and industrial equipment, Molex's commercial Micro-D is ideally suited for your most demanding applications. Our broad line of robust rectangular connectors provide superior contact retention, unrivaled crimp strength and maximum strain relief. Plus, a unique one-piece backshell construction simplifies assembly and lowers overall applied costs.

Get the best, fast.
Call Molex today for a commercial Micro-D solution that delivers when you need it.

Corporate Headquarters
2222 Wellington Court
Lisle, Illinois 60532 U.S.A.
Tel: 630-969-4550
Fax: 630-969-1352

Far East North Headquarters
Yamato, Japan
Tel: 81-462-65-2324
Fax: 81-462-65-2361

Far East South Headquarters
Jurong, Singapore
Tel: 65-262-3997
Fax: 65-265-6044

European Headquarters
Munich, Germany
Tel: 49-89-413092-0
Fax: 49-89-401527

Industrial Division
4650 62nd Avenue North
Pinellas Park, FL 33781
Tel: 800-800-0449
Fax: 727-528-1010



Bringing People & Technology
Together, WorldwideSM