

# 3M™ PC Card Header

Dual Slot, Low Profile, Integrated Ejector

MCH Series



- Meets PCMCIA specifications
- Tapered header pins provide easy insertion
- High temperature plastic insulator
- Left or right ejector options
- Solder retention clips and plastic pegs for secure hold-down

Date Modified: May 30, 2003

TS-1113-01  
Sheet 1 of 3

---

## Physical

### Insulation

Material: LCP  
Flammability: UL 94V-0  
Color: Black

### Contact

Material: Copper Alloy

### Plating

Underplating: 50  $\mu$ " [ 1.27  $\mu$ m ] Nickel  
Wiping Area: Gold flash over 27  $\mu$ " [ .68  $\mu$ m ] PdNi  
Solder Tail: 100  $\mu$ " [ 2.54  $\mu$ m ] Tin/Lead

### Mechanical:

Durability-Office Environment: 10,000 cycles minimum  
Insertion Force: 8.8 lbs. ( 39.2 N ) maximum  
Extraction Force: 1.5 lbs. ( 6.67 N ) minimum and 8.8 lbs. ( 39.2 N ) maximum

---

## Electrical

**Current Rating:** 0.5 A

**Insulation Resistance:**  $>10^9 \Omega$  at 500 Vdc

**Withstanding Voltage:** 500 Vrms for 1 minute

---

## Environmental

### Temperature Ratings

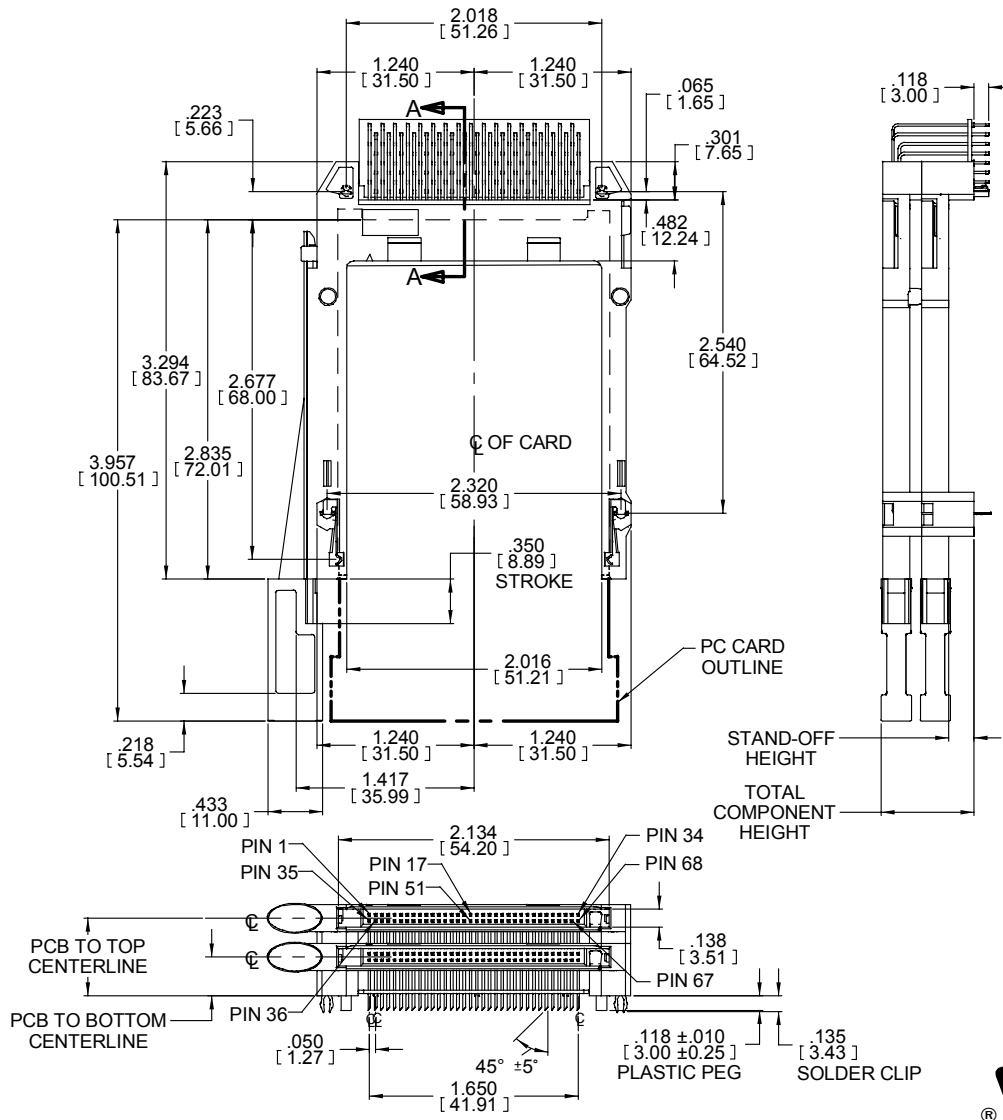
Operating Environment: -20°C to +60°C, 95% RH Non-condensing

UL File No.: E68080

**3M**  
Interconnect Solutions  
<http://www.3M.com/interconnects/>

3M is a trademark of 3M Company.  
For technical, sales or ordering information call  
**800-225-5373**

### Left Ejector Option



### Ordering Information

**MCH - 136TAX - XX LPX X - TR30**

Ejector Options  
 L1 = Left ejectors, oval buttons  
 L2 = Left ejectors, square buttons  
 R1 = Right ejectors, oval buttons  
 R2 = Right ejectors, square buttons  
 LR1 = top left /bottom right ejectors, oval buttons  
 LR2 = top left /bottom right ejectors, square buttons  
 RL1 = top right /bottom left ejectors, oval buttons  
 RL2 = top right /bottom left ejectors, square buttons

Insulator Body Style  
 24 = 7.0 mm stand-off

Keying  
 Blank = 5.0 volt  
 3 = 3.3 volt

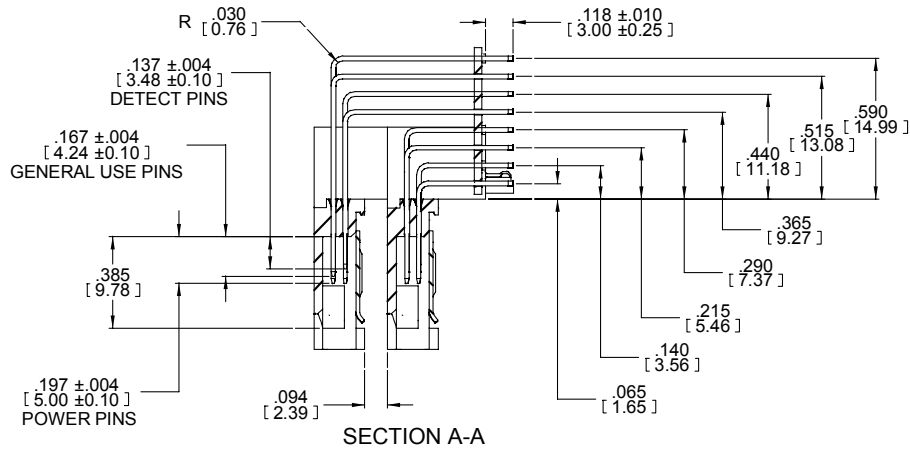
ESD/Solder Retention Clips  
 K = ESD solder retention clips,  
 plastic pegs @ 2.018"  
 (in line w/ pins 36 & 68)

TS-1113-01  
 Sheet 2 of 3

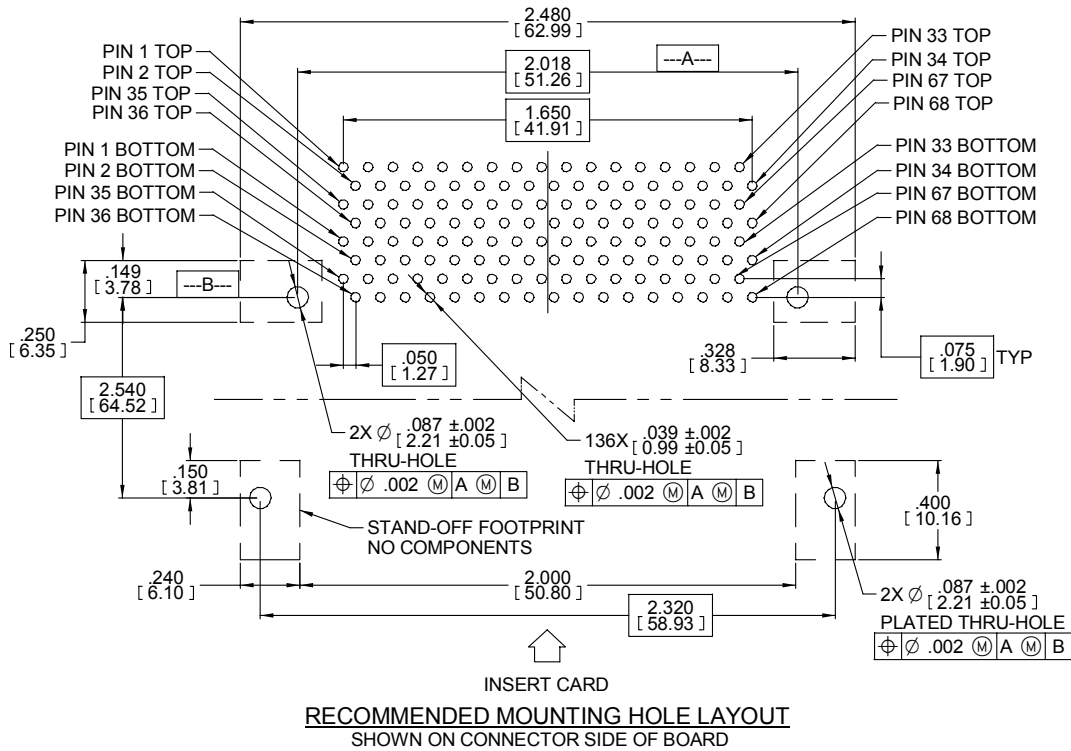
# 3M™ PC Card Header

## Dual Slot, Low Profile, Integrated Ejector

MCH Series



Part Description	Stand-off Height	Total Component Height	PCB to Bottom Mating Center Line	PCD to Top Mating Center Line
MCH-136TAX24LPXX-TR30	.275 [7.00]	.808 [20.53]	.382 [9.71]	.690 [17.53]



TS-1113-01  
Sheet 3 of 3

### **Important Notice**

All statements, technical information, and recommendations related to 3M's products are based on information believed to be reliable, but the accuracy or completeness is not guaranteed. Before using this product, you must evaluate it and determine if it is suitable for your intended application. You assume all risks and liability associated with such use. Any statements related to the product which are not contained in 3M's current publications, or any contrary statements contained on your purchase order shall have no force or effect unless expressly agreed upon, in writing, by an authorized officer of 3M.



### **Electronic and Interconnect Solutions Division**

6801 River Place Blvd.  
Austin, TX 78726-9000  
[www.3M.com/eisd](http://www.3M.com/eisd)

### **Warranty; Limited Remedy; Limited Liability.**

This product will be free from defects in material and manufacture for a period of 1 year from the date of purchase. **3M MAKES NO OTHER WARRANTIES INCLUDING, BUT NOT LIMITED TO, ANY IMPLIED WARRANTY OF MERCHANTABILITY OR FITNESS FOR A PARTICULAR PURPOSE.** If this product is defective within the warranty period stated above, your exclusive remedy shall be, at 3M's option, to replace or repair the 3M product or refund the purchase price of the 3M product. **Except where prohibited by law, 3M will not be liable for any loss or damage arising from this 3M product, whether direct, indirect, special, incidental or consequential regardless of the legal theory asserted.**

© 3M 2003