

Search

Part Number Search
Search in this site

Search

[Jump to Top page](#)

- Products**
- [Microcomputer](#)
 - [TLCS-47 Family](#)
 - [Development System](#)
 - [Accessories](#)
 - MCU mount adapters**

Applications

Company Profile

News and Event

[Site Map](#)

[???](#)

[? ???](#)

[????](#)

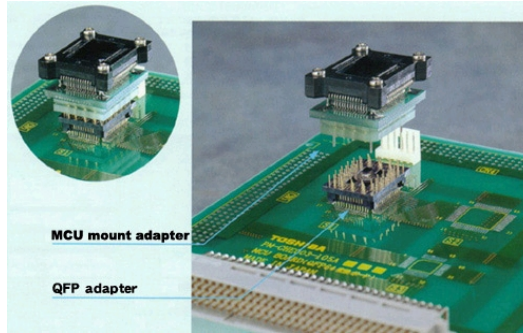
Development System : Accessories

SEMICONDUCTOR

[New User Registration](#)

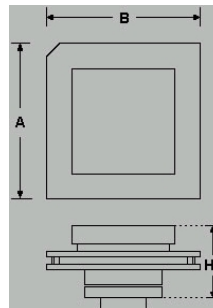
[Registered Customers' Exclusive Page](#)

MCU mount adapters



Using the MCU mount adapter and the QFP adapter together allows you to mount the MCU on the t system.

External Dimensions



External dimensions of MCU mount adapters

MCU mount adapters (Unit:mm)

MCU mount adapter	IC Package (body size pitch)	A	B	H3
PN210002	QFP80, 14x20, 0.80	40.0	45.0	27.0
PN210005A	QFP100, 14x20, 0.6	26.6	32.2	19.0
PN210008	QFP80, 12x12, 0.50	33.02	33.02	25.3
PN210011A	QFP64, 14x20, 1.00	29.0	36.0	20.0
PN210013A	QFP100, 22x22, 0.8	39.0	39.0	22.0
PN210018	QFP80, 14x14, 0.65	26.0	26.0	17.0
PN210020A	QFP44, 10x10, 0.80	26.0	26.0	25.0
PN210023	QFP100, 14x14, 0.5	37.5	37.5	24.0
PN210026	QFP64, 14x14, 0.80	26.0	33.0	17.0
PN210030	QFP160, 28x28, 0.6	50.0	50.0	23.0
PN210033	QFP64, 10x10, 0.50	44.0	46.0	32.0
PN210036	QFP144, 20x20, 0.5	60.0	60.0	24.5
PN210044	QFP144, 16x16, 0.4	25.0	25.0	7.4
PN210051	QFP120, 14x14, 0.4	23.0	23.0	7.4
PN210054	QFP128, 14x14, 0.4	23.0	23.0	7.4

[Top of this page](#)

Links

Accessories

[MCU probes](#)

[QFP adapters](#)

[MCU mount adapters](#)

[Spare Parts from Toshiba](#)

[FAQ](#)

Development System

[Language Tools](#)

[Debugger](#)

[Emulator](#)

[Accessories](#)

[Flash/OTP Programming tools](#)

Other series of Development Systems

[TX49 Family](#)

[TX39 Family](#)

[TX19 Series](#)

[TX19A Series](#)

[TLCS-900/H1 Series](#)

[TLCS-900/L1 Series](#)

[TLCS-900/H Series](#)

[TLCS-900/L Series](#)

[TLCS-900 Series](#)

[TLCS-870/X Series](#)

[TLCS-870/C1 Series](#)

[TLCS-870/C Series](#)

[TLCS-870 Series](#)

[TLCS-47 Family](#)

[Top of this page](#)