

Data Conversion

- > [Analog-to-Digital Converters \(ADC\)](#)
- > [Digital-to-Analog Converters \(DAC\)](#)
- > [Switches and Multiplexers](#)
- > [Signal Chain \$\mu\$ Module](#)
- > [Data Conversion Evaluation Kits](#)

MyLinear Sign Up
 For a MyLinear Account >

Home > Products > Data Conversion > Data Conversion Evaluation Kits > DC996B-A

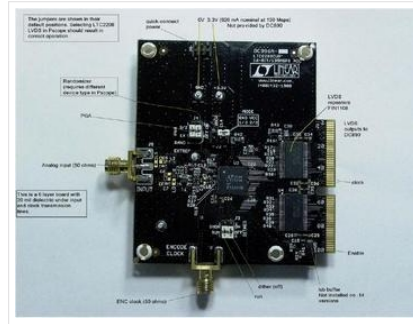
DC996B-A - LTC2208 Evaluation Kit (Fin= 1-70MHz) LVDS Outputs

[FEATURES](#) [DESCRIPTION](#) [PACKAGING](#) [ORDER INFO](#) [SIMULATE](#)

FEATURES

- [To be used in conjunction with the DC890B - FastDAACS USB Controller for QuickEval-II Evaluation Kits](#)
- **Disclaimer:** Linear Technology cannot assume responsibility for use of any circuitry other than circuitry entirely embodied in a Linear Technology product. No circuit patent licenses are implied. Linear Technology reserves the right to change the circuitry and specifications without notice at any time.

TYPICAL APPLICATION



[BACK TO TOP](#)

DESCRIPTION

Demonstration circuit 996 supports a family of 16/14-Bit 130Mbps ADCs. Each assembly features one of the following devices: LTC2208, LTC2208-14 high speed, high dynamic range ADCs.

This Demonstration circuit only supports LVDS operation. For demonstration of CMOS output signaling, please see DC854.

Other members of this family include the LTC2207 which is 105Mbps 16-Bit CMOS-only version of this device, as well as lower speed versions and single-ended clock versions. These 7x7mm QFN devices are supported by Demonstration circuits 918 and 919 (for single-ended clock input).

Several versions of the 996B demo board supporting the LTC2208 16-Bit and LTC2208-14 14-Bit series of A/D converters are listed in Table 1. Depending on the required resolution, sample rate and input frequency, the DC996 is supplied with the appropriate ADC and with an optimized input circuit. The circuitry on the analog inputs is optimized for analog input frequencies below 70MHz or from 70MHz to 140MHz. For higher input frequencies, contact the factory for

[BACK TO TOP](#)

PACKAGING

[BACK TO TOP](#)

ORDER INFO

- Part numbers ending in PBF are [lead free](#). Please contact LTC marketing for information on lead based finish parts.
- Part numbers containing TR or TRM are shipped in [tape and reel or 500 unit mini tape and reel](#), respectively
- Please refer to our [general ordering information](#) or the product datasheet for more details

Evaluation Kits

Part Number	Description	Price
DC996B-A	LTC2208IUP LVDS OUT, 130Mbps, 16-Bit ADC 1MHz < Aim < 70MHz, DC890	\$200.00
DC890B	High Speed USB Data Collection Board	\$300.00

[Buy Now](#)

[BACK TO TOP](#)

APPLICATIONS

[BACK TO TOP](#)

SIMULATE

The QuickEval-II System is a USB-based product demonstration and data acquisition system for use with Linear Technology's high performance ADCs. The system consists of a USB Data Acquisition Controller board that connects to individual daughter cards for specific Linear Technology ADCs. The software collects and analyzes data from the ADC in both the time and frequency domains and displays relevant parameters for the device being evaluated. The software also provides an automatic update feature to keep the software current with the latest set of device drivers.

- [Click Here to Download Software for the QuickEval II System](#)

[BACK TO TOP](#)

MyLinear

Order Now

[Buy](#) →

Documentation

- Reference Design
[DC890B - FastDAACS USB Controller for QuickEval-II Evaluation Kits](#)
[DC996 - LTC2208/2208-14 Evaluation Kits \(PDF\)](#)