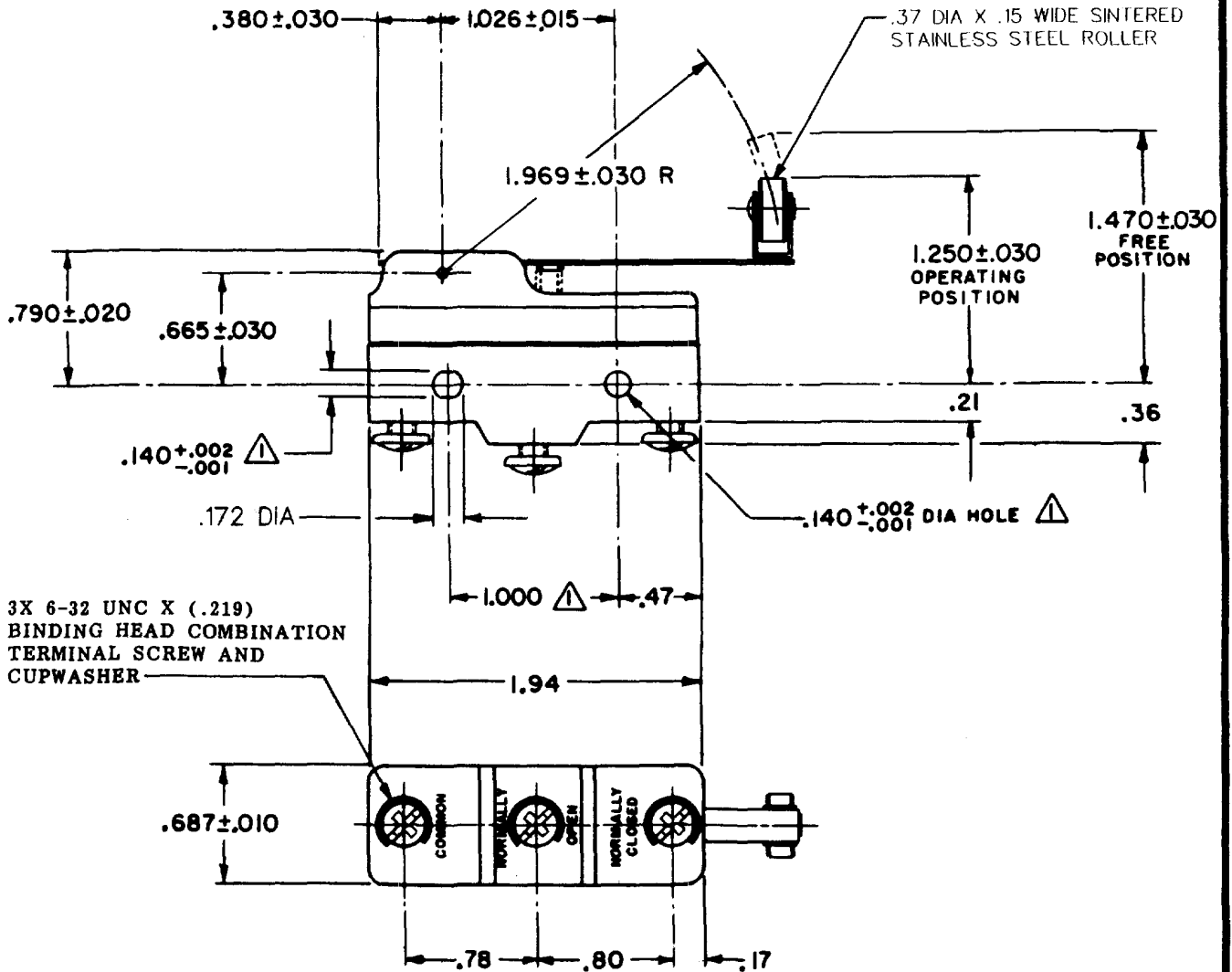


# MICRO SWITCH

A DIVISION OF MINNEAPOLIS-HONEYWELL REGULATORS COMPANY  
 FEDERAL REGISTERED TRADEMARK  
 FED. MFR. CODE 91929

## SWITCH - BASIC

CATALOG LISTING  
**BZ-2RW8238-A2**



**NOTE**  
 ▲ MOUNTING HOLES WILL ACCEPT PINS OR SCREWS OF .139 MAX DIA ON 1.000 ±.002 CENTERS

THIS DRAWING COVERS A PROPRIETARY ITEM AND IS THE PROPERTY OF MICRO SWITCH, A DIVISION OF MINNEAPOLIS-HONEYWELL REGULATOR CO. THIS DRAWING IS NOT TO BE COPIED OR USED WITHOUT THE APPROVAL OF MICRO SWITCH.

CHARACTERISTICS		ELECTRICAL DATA		SCALE FULL
OPERATING FORCE -----	3 1/2 OZ MAX	CONTACT ARRANGEMENT	BREAK DISTANCE	DO NOT SCALE PRINT
RELEASE FORCE -----	3/4 OZ MIN	S P D T	.020 MIN	UNLESS OTHERWISE SPECIFIED
DIFFERENTIAL TRAVEL -----	.004 - .040	UNDERWRITERS' LAB. INC. LISTED RATING -L96- 15 A-125, 250, OR 480 VAC 1/2 A-125 VDC; 1/4 A-250 VDC 1/8 HP-125 VAC; 1/4 HP-250 VAC		DIMENSIONS ARE IN INCHES
OVERTRAVEL -----	.156 MIN	-L288-	CE D	<b>TOLERANCES ARE:</b>
		-L299-	16A 250V ~ T85 5E4	ONE PLACE (.0) ±.030
		-L306-		TWO PLACE (.00) ±.015
				THREE PLACE (.000) ±.008
				ANGLES ±
				WEIGHT .076 LB

**M BZ-2RW8238-A2**  
 PAGE 1 OF 1  
 DRAWING NUMBER  
 ISSUE 6  
 RELEASE NO.

REVISIONS

A	CO	18736
S C H 22 AUG 62		
B	CO-	73287-J
J A L 22 NOV 93		
C	CO-	75204R
J W B 1 FEB 94		
D	CO	77589
T S M 29 MAR 94		
E	CO	093346
D L T 11 SEP 98		

FORMTEK  
 CO-50378  
 DRAWN  
 G C H 22 AUG 62  
 CHECK  
 D A W 21 SEPT 62  
 CHECK