



MICRO SWITCH

FREEPORT, ILLINOIS, U.S.A.
A DIVISION OF HONEYWELL

FED. MFG. CODE 91929

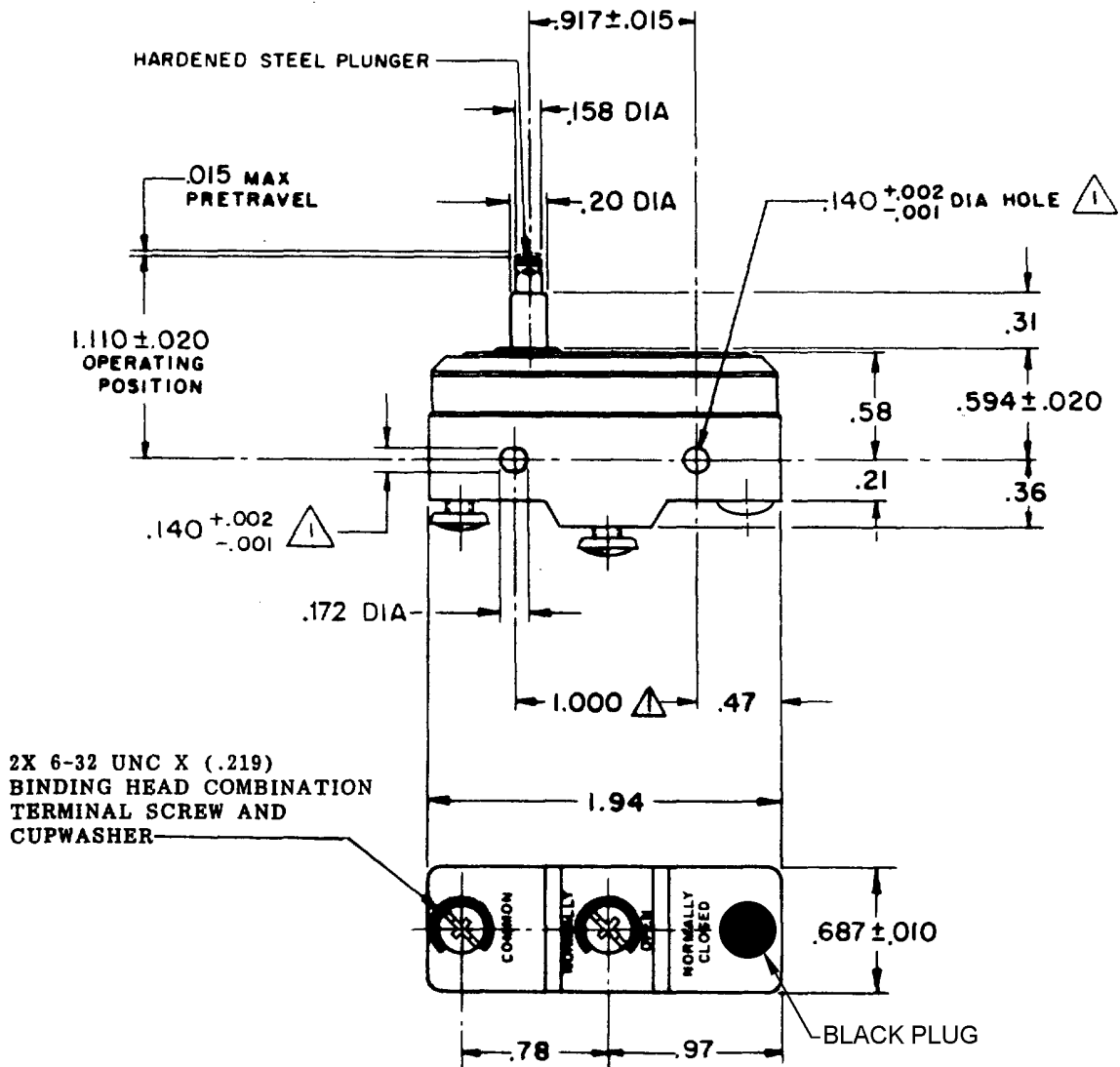
SWITCH-BASIC

CATALOG LISTING
YZ-2RS-A2

AXS1000

YZ-2RS-A2		REPLACES
PAGE 1 OF 1		
M		RELEASE NO.
DRAWING NUMBER		
8		
ISSUE		

REVISIONS		CHECK
A	CO17410	09JAN06
S C H		
2 APRIL 63		
B	CO	
44156		
Y M M		
20 APR 78		
C	CO-	
73287		
J A L		
22 NOV 93		
D	CO-	
7758E		
K O R		
29 MAR 94		
E	CO93346	
D L T		
23 SEP 98		
F	0000713	
J A H		
30 JUN 03		
G	0017586	
T S G		
09JAN06		



NOTES
 ▲ MOUNTING HOLES WILL ACCEPT PINS OR SCREWS OF .139 MAX DIA ON 1.000 ± .002 CENTERS.

THIS DRAWING COVERS A PROPRIETARY ITEM AND IS THE PROPERTY OF MICRO SWITCH, A DIVISION OF MINNEAPOLIS-HONEYWELL REGULATOR CO. THIS DRAWING IS NOT TO BE COPIED OR USED WITHOUT THE APPROVAL OF MICRO SWITCH.

CHARACTERISTICS

OPERATING FORCE ----- 9-13 OZ
 RELEASE FORCE ----- 4 OZ MIN
 DIFFERENTIAL TRAVEL -----.0004-.0020
 OVERTRAVEL ------.062 MIN

ELECTRICAL DATA

CONTACT ARRANGEMENT
 S P N O

-L96- 15 A-125, 250, OR 480 VAC
 1/2 A-125 VDC; 1/4 A-250 VDC
 1/8 HP-125 VAC; 1/4 HP-250 VAC

-L288- CE ENEC 05 RU SI
 -L306-
 -L315- 16A 250V ~ T85 5E4

SCALE FULL

DO NOT SCALE PRINT

UNLESS OTHERWISE NOTED
 DIMENSIONS ARE IN INCHES
TOLERANCES ARE:

ONE PLACE	(.0)	±.030
TWO PLACE	(.00)	±.015
THREE PLACE	(.000)	±.005

ANGLES ±

WEIGHT .063 LB

RASTER
 DRAWN
 G C H 2 APRIL 63 CHECK L.S.D. 16 APR 63